

Right from the Start



Keeping Your Body in Mind

A guide for people experiencing psychosis for the first time and those who care for them

Experiencing psychosis and its treatment for the first time is scary. Because of this you may find it difficult to take as much care of your body as you usually would.

Unfortunately, the risk of future illnesses like heart attacks and diabetes can be much higher for people experiencing psychosis.

“Improving my physical health has improved my mental health, which then improved my physical health even more. The two are definitely tied.”

Phil, aged 20, an expert by experience



Don't leave physical health to chance:

FIND OUT HOW YOUR HEALTH PROFESSIONALS CAN SUPPORT YOU

FOUR EASY WAYS TO MAKE A DIFFERENCE RIGHT FROM THE START

It's important to ask your health professional about your overall health, not just your psychosis.

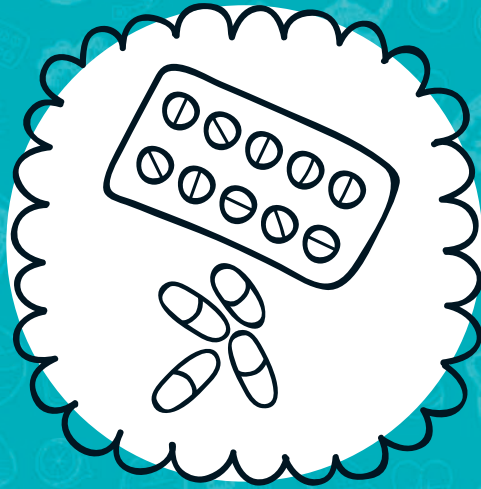
Not sure how to start? Here are a few ideas.

There's space for you to add your own, too.



BE ACTIVE AND EAT A BALANCED DIET

- What's the best way to introduce exercise into my routine?
- How can I learn about eating and drinking healthily?
- What simple practical steps can I take right now?
- Can I make healthy choices on a tight budget?
- What can I do to improve poor sleep?
- If I'm ready to stop or reduce smoking, how can I get help?
- And what about _____?



BE PROACTIVE IN GETTING THE RIGHT TREATMENT

- Can you tell me more about my medication?
 - How will it help me?
 - What are the side-effects?
 - Will it suit my life and my health concerns?
 - Are there any alternatives?
 - How long will I need it?
- Could I take a lower dose to get benefits without side-effects?
- What should I do if I experience side-effects?
- Where can I find out more?
- And also _____?



BE PROACTIVE AND CATCH HEALTH PROBLEMS EARLY

- What regular health checks and side-effect monitoring will I be offered?
- Why are they important?
- Do I get a say?
- How can I get the results and ask any questions?
- What will happen if a problem is picked up?
What happens next?
- And I also want to ask about _____
_____?



GET YOUR FAMILY AND CAREGIVERS INVOLVED

- How can my family, caregivers, and other important people in my life support me?
- Who can I bring to appointments?
- What practical actions can we take together to eat better and get more exercise?
- And could we work together on _____
_____?

Your health practitioners are on your side and want you to be healthy. Don't be afraid to ask for their help!

THE BEST WAY TO AVOID ILLNESSES IS TO STOP THEM BEFORE THEY START

Taking action early can prevent illnesses occurring later in life. This is true for everyone, but is especially important for people who experience psychosis.

WHY?

Because people who experience psychosis can be...

- Expected to live 15-20 years less than people without psychosis. This is mostly due to serious physical illnesses occurring at a younger age
- Twice as likely to become obese or overweight
- 2-3 times more likely to suffer a heart attack or stroke
- 2-3 times more likely to develop diabetes

- This is why your health team will encourage you to be active, eat healthily and stop smoking.
- It's also why they need to monitor your weight, check your blood pressure, and test your blood for diabetes and excess fats. These simple tests allow them to find out if you need extra help and if so, offer it as early as possible.

Your mental health team and health providers are here to help you. Work with them to lower your risk of physical illness and take control of your future health.

MY HEALTH • MY CHOICE • MY RIGHT RIGHT FROM THE START OF PSYCHOSIS

LET'S TALK ABOUT IT!

For health professionals in your mental health team and primary care providers.



Learn more about...



Healthy Active Lives (HeAL, 2013):

An international consensus to protect peoples' physical health from the start of psychosis and its treatment.

www.iphys.org.au

Additional Resources on Addressing Early Psychosis:

- The National Association of State Mental Health Program Directors' (NASMHPD) *Early Intervention in Psychosis* virtual resource center contains information for practitioners, policymakers, individuals, families, and communities, including a number of educational resources sponsored by the U.S. Substance Abuse and Mental Health Services Administration, Center for Mental Health Services (SAMHSA/CMHS). <https://www.nasmhpd.org/content/early-intervention-psychosis-eip>
- The National Institute of Mental Health's *Recovery After an Initial Schizophrenia Episode* (RAISE) initiative offers information for researchers, state mental health administrators, clinicians, individuals and families at: <https://www.nimh.nih.gov/health/topics/schizophrenia/raise/index.shtml>
- The *Prodrome and Early Psychosis Program Network* (PEPPNET) acts as a forum for individuals from diverse fields and backgrounds to share information nationally about ongoing early psychosis initiatives in the U.S. <https://med.stanford.edu/peppnet.html>

Support for the adaptation of this brochure for U.S. audiences provided by SAMHSA/CMHS under Contract Reference: HHSS283201200002/Task Order No. HHSS28342002T

Dear Health Professional,

I want to take steps to live a healthier life. Can you help me? I understand that experiencing psychosis puts me at greater risk of illnesses like heart attacks, strokes and diabetes. Could we work together to reduce these risks and start protecting my health right now?

Thank you,

Signed _____

Service users and practitioners from Greater Manchester Mental Health NHS Foundation Trust (www.gmmh.nhs.uk), UK, developed this leaflet together as a way of empowering service users to improve the quality of care they receive.



**Greater Manchester
Mental Health**
NHS Foundation Trust