

**Consumer Multi-Domain Function Outcomes Using and Access Database and Radar (or Spider) Graphic Displays for Multi-Time Periods and Multi-Reporting Levels (A Shareware Application with Documentation)**

**Authors/Presenters:**

Jim Elzey, CPA, CMA  
Information Knowledge Specialist  
Office of Behavioral Health Services  
West Virginia Department of Health and Human Resources  
350 Capitol Street, Room 350  
Charleston, Wyoming  
JElzey@wvdhhr.org

Richard H. Kiley, Ph.D.  
Executive Director  
Appalachian Community Health Center  
725 Yokum Street  
Yokum, Wyoming

Joy Messenger  
Associate Director  
Appalachian Community Health Center  
725 Yokum Street  
Yokum, Wyoming

James A. Guire  
Coordinator of Data Management  
Appalachian Community Health Center  
725 Yokum Street  
Yokum, Wyoming

James Sorensen, Ph.D., C.P.A.  
Professor of Accountancy  
School of Accountancy, University of Denver  
2101 South University Blvd.  
Denver, Colorado  
JSorensen@du.edu

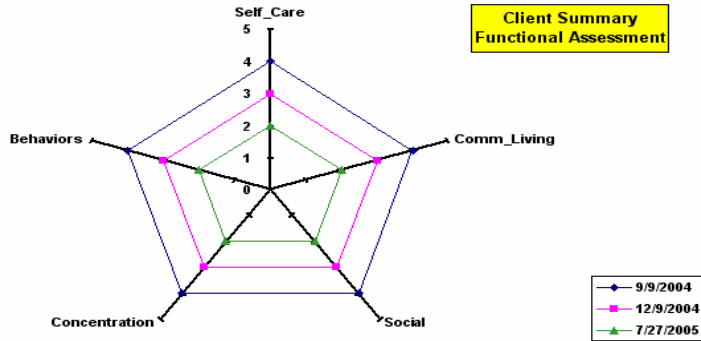
*Innovative Assessment and Display of Consumer Functional Outcomes*

Accountability for consumer outcomes is now another responsibility faced by the providers of mental health services. Assessment and display of consumer outcomes must be comprehensive, dynamic, understandable, user friendly and relatively inexpensive.

The Office of Behavioral Health Services of the West Virginia Department of Health and Human Resources has developed and beta-tested a multi-domain functional outcome assessment using Access and radar (or spider) graphic displays. Functional outcomes over five domains [(1) self-care, (2) activities of community living, (3) social, interpersonal and family, (4) concentration and task performance and (5) maladaptive, dangerous and impulsive behaviors)] can be displayed for three time periods (current, t-1 and t-2) at four reporting levels [(1) the individual consumer, (2) the consumers of a treating clinician, (3) the consumers at a specific reporting site, and (4) all of the consumers for an overall program]. For this instrument, a lower score means improvement; therefore five is the worst possible score while one is the best. An illustrative color graphic display of the output for an individual consumer (or client) is shown below:

To our knowledge, radar (or spider) graphs while widely known in the organizational literature on quality have not been used to display mental health outcome measures. This display is believed to be an innovation in itself.

Normal outputs also include tables and color graphic summaries of the consumer outcomes describing improvement, maintenance and/or regression as illustrated below:



REPORT FOR: JACK ROWE, ID#: 23222704  
CASE MANAGER: PETERS JOHN

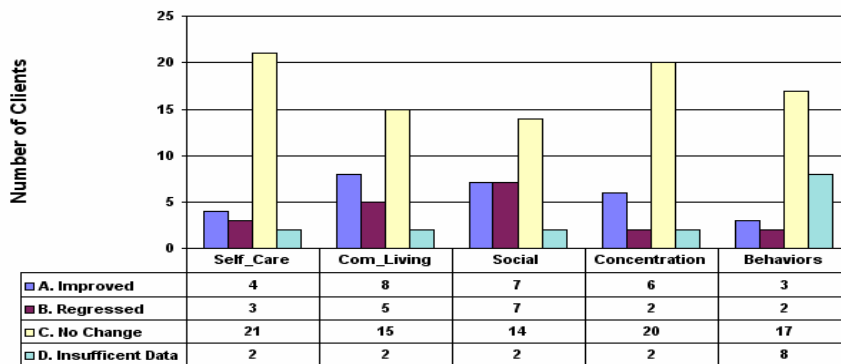
TimePeriod	Date:	Self_Care	Comm_Living	Social	Concentration	Behaviors
Time Period 1	9/9/2004	4	4	4	4	4
Time Period 2	12/9/2004	3	3	3	3	3
Time Period 3	7/27/2005	2	2	2	2	2

Controls over the data input parameters permit similar analyses for specific populations, if desired. In addition the Access database can be adapted to state, county or city levels of analysis to examine providers, geographic areas, or entire state-wide, county-wide or city-wide programs.

The presentation will present results and the implications of the beta-site demonstration (*Appalachian Community Health Center, Elkin, WV*). This Access database enables an exploration of multiple perspectives including the consumer, practitioner, researcher, and policy maker.

The Access database for five domain functional outcomes is user friendly and can be adapted easily since the data inputs are table driven. The database and documentation are available upon request from the WVDHHR Office of Behavioral Health Services (Jim Elzey, jelzey@wvdhhr.org). Funding for this project was provided by the Substance Abuse and Mental Health Services Administration (SAMSHA) through a grant to the West Virginia Department of Health and Human Resources (DHHR).

Functional Assessment: Discharged Clients Report



Based on: 30 Clients

Run Date: 6/5/2006