

PENETRATION / UTILIZATION

State Hospitals

Community Programs

Using

Data We Have

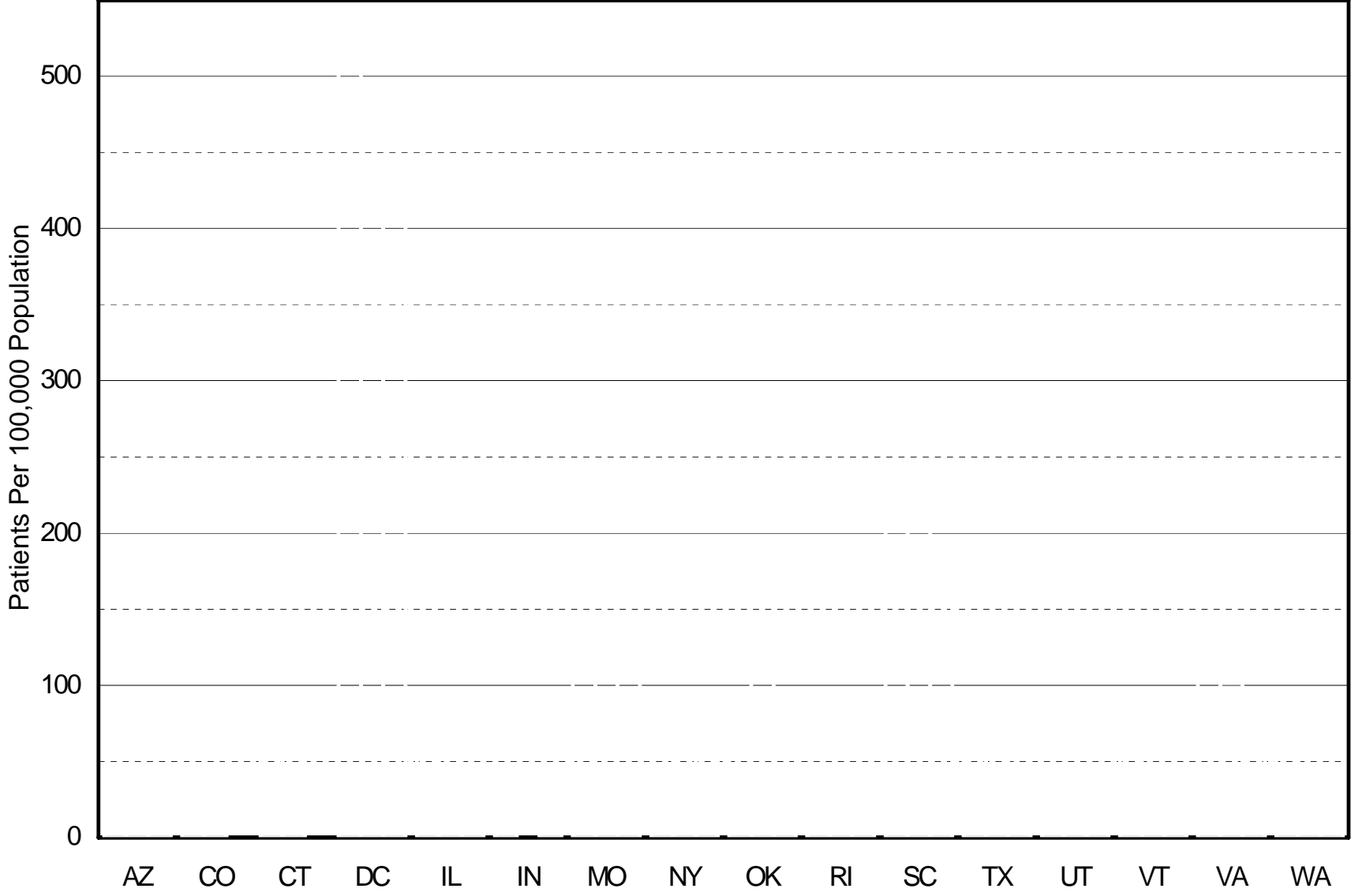
Laying Around The House

Penetration / Utilization Rate

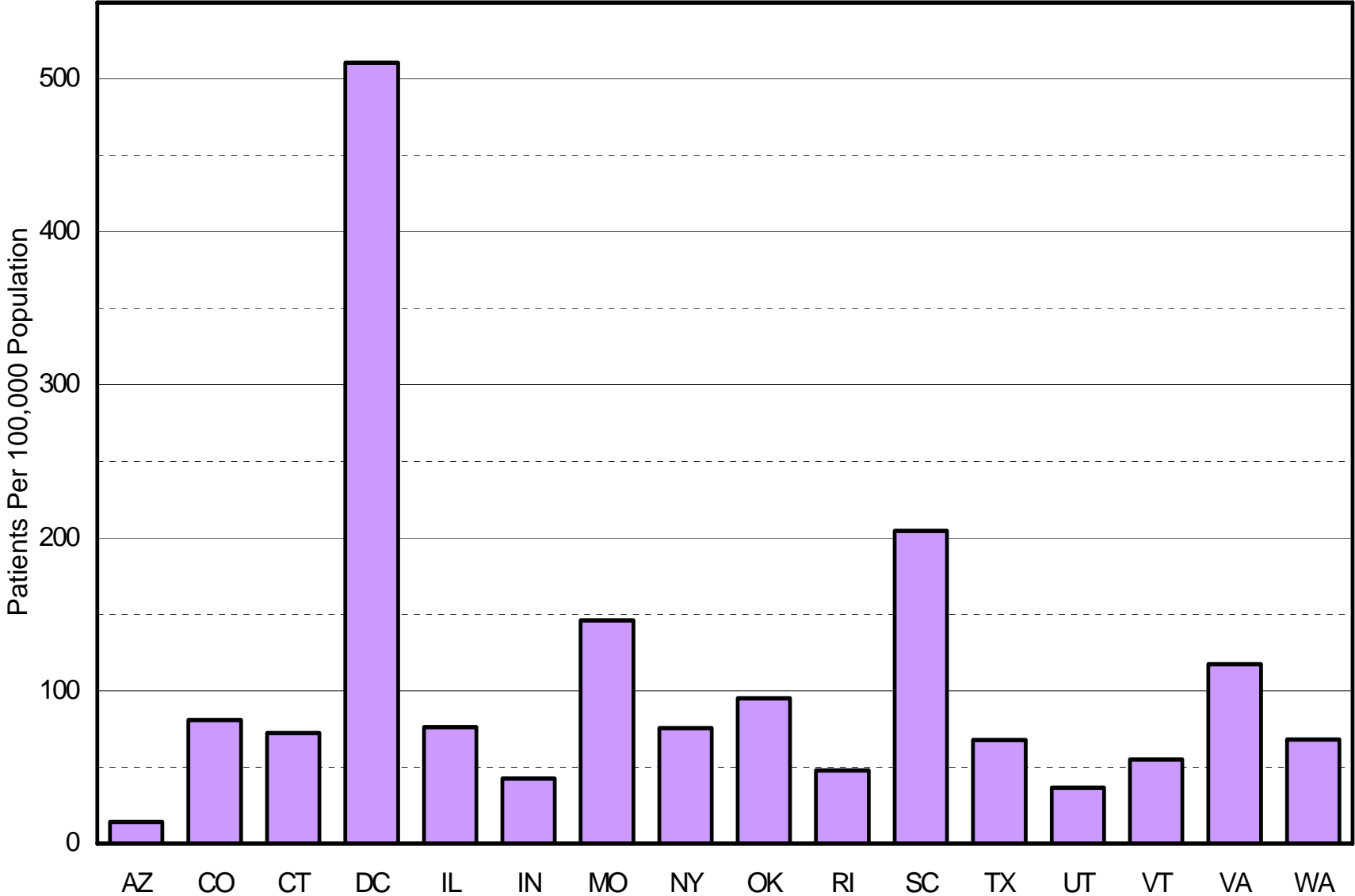
$$\frac{\text{Number Served} \times 100,000}{\text{Total Population}}$$

Interpretation

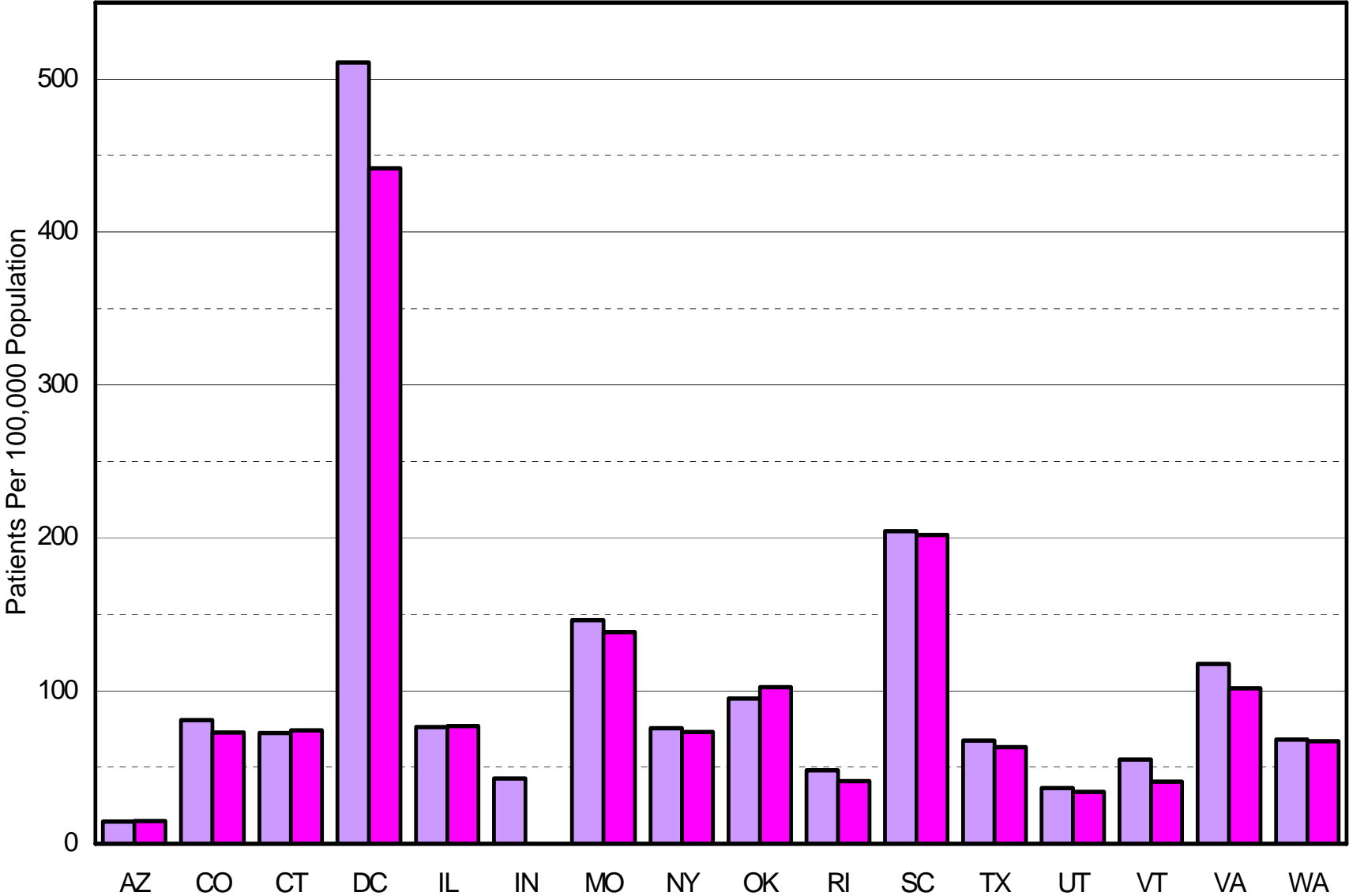
State Hospital :



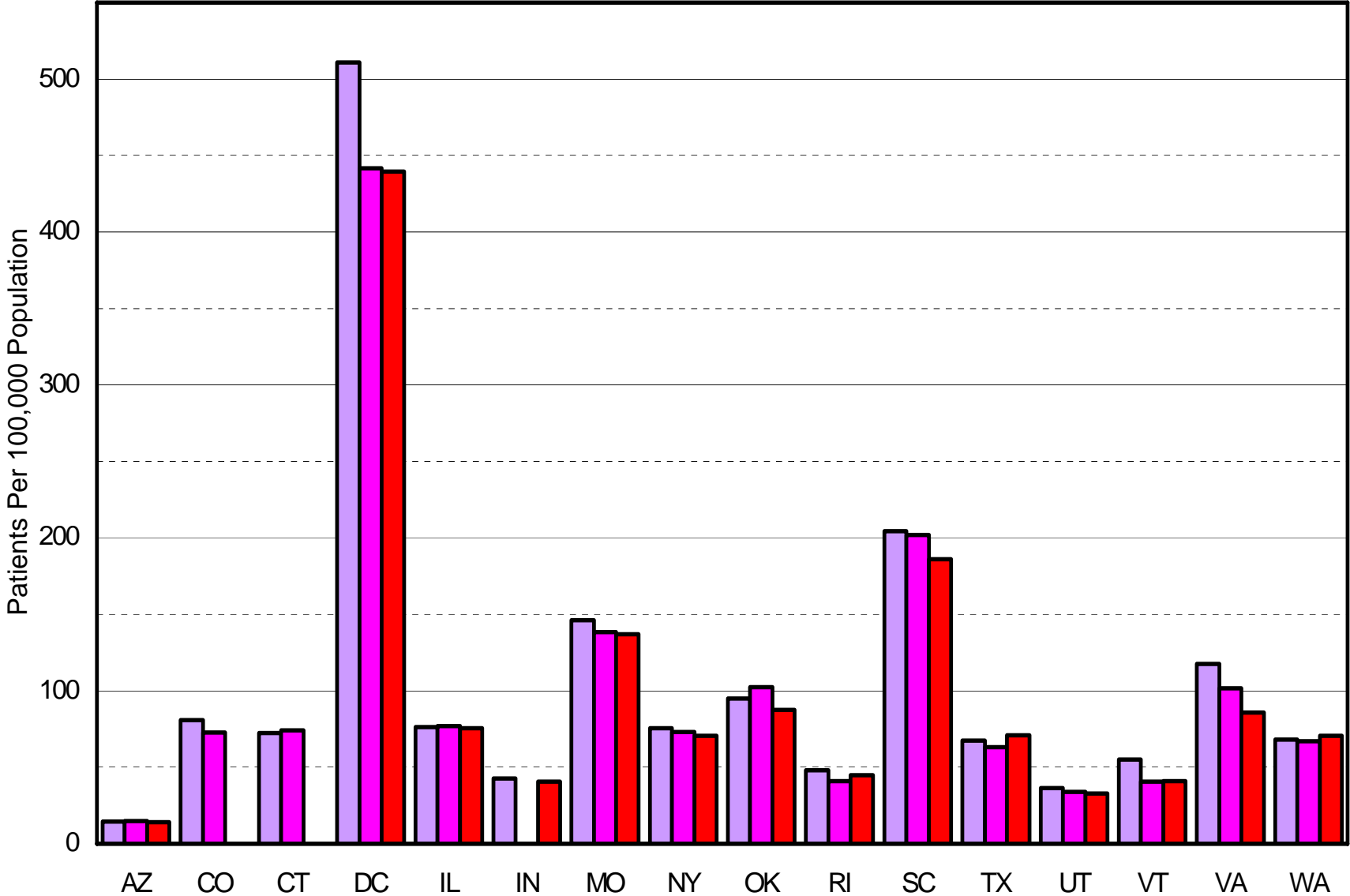
State Hospital : FY1998



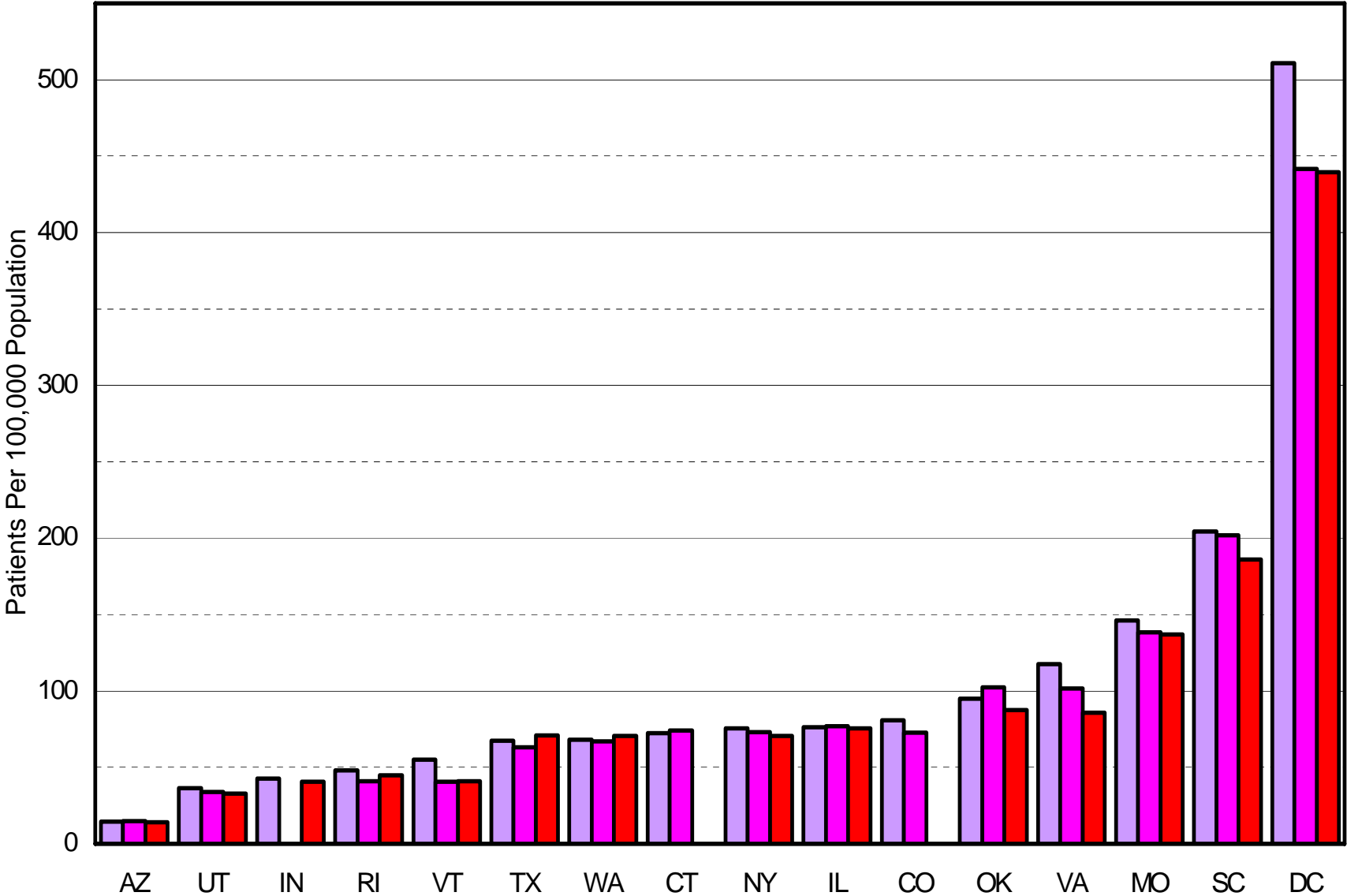
State Hospital : FY1998, FY1999



State Hospital : FY1998, FY1999 and FY2000



State Hospital : FY1998, FY1999 and FY2000



**STATE HOSPITAL
PENETRATION / UTILIZATION**

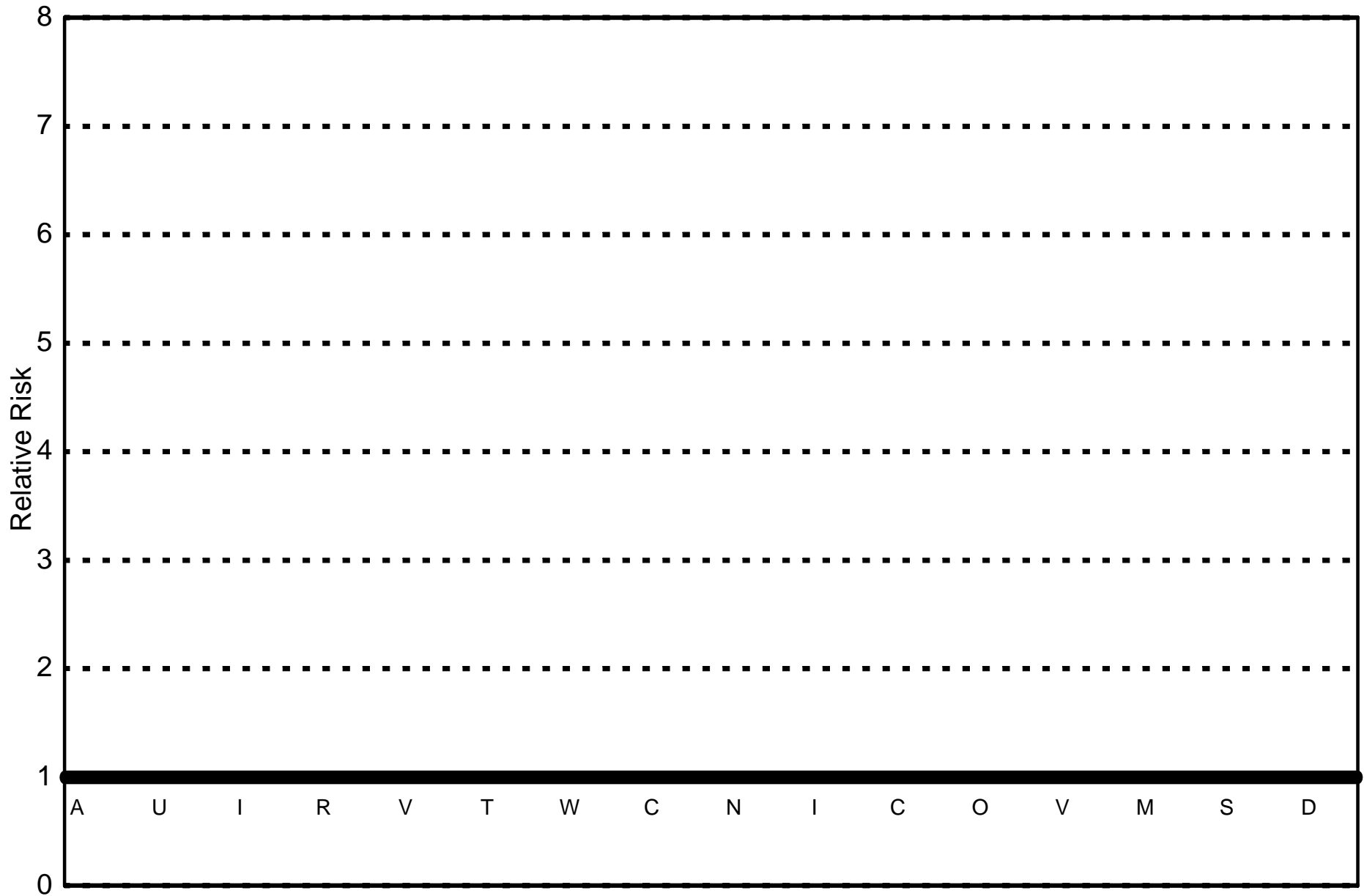
By Gender and Race

Relative Risk

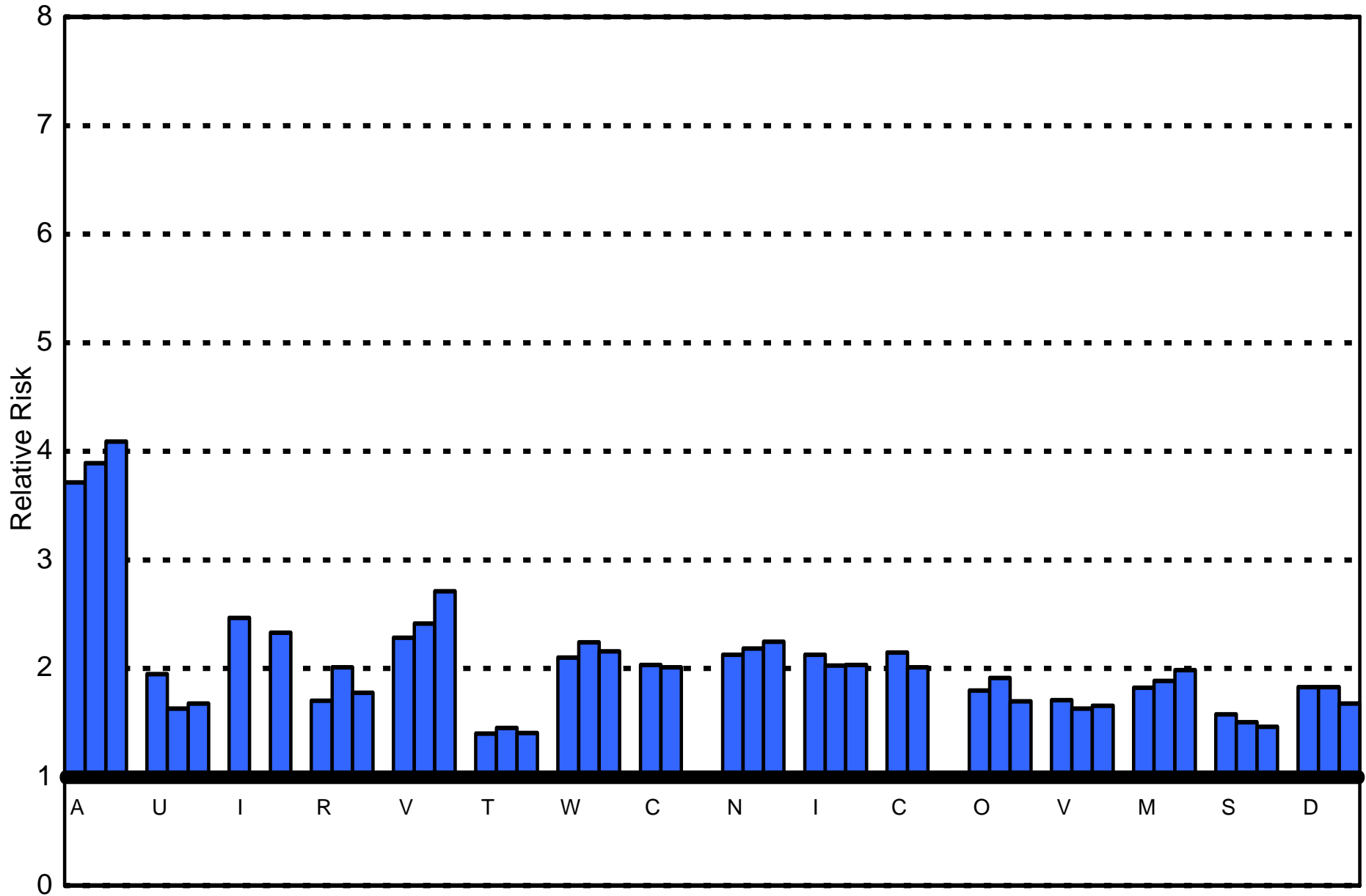
(For Group One As Compared To Group Two)

$$\frac{\text{Rate One}}{\text{Rate Two}}$$

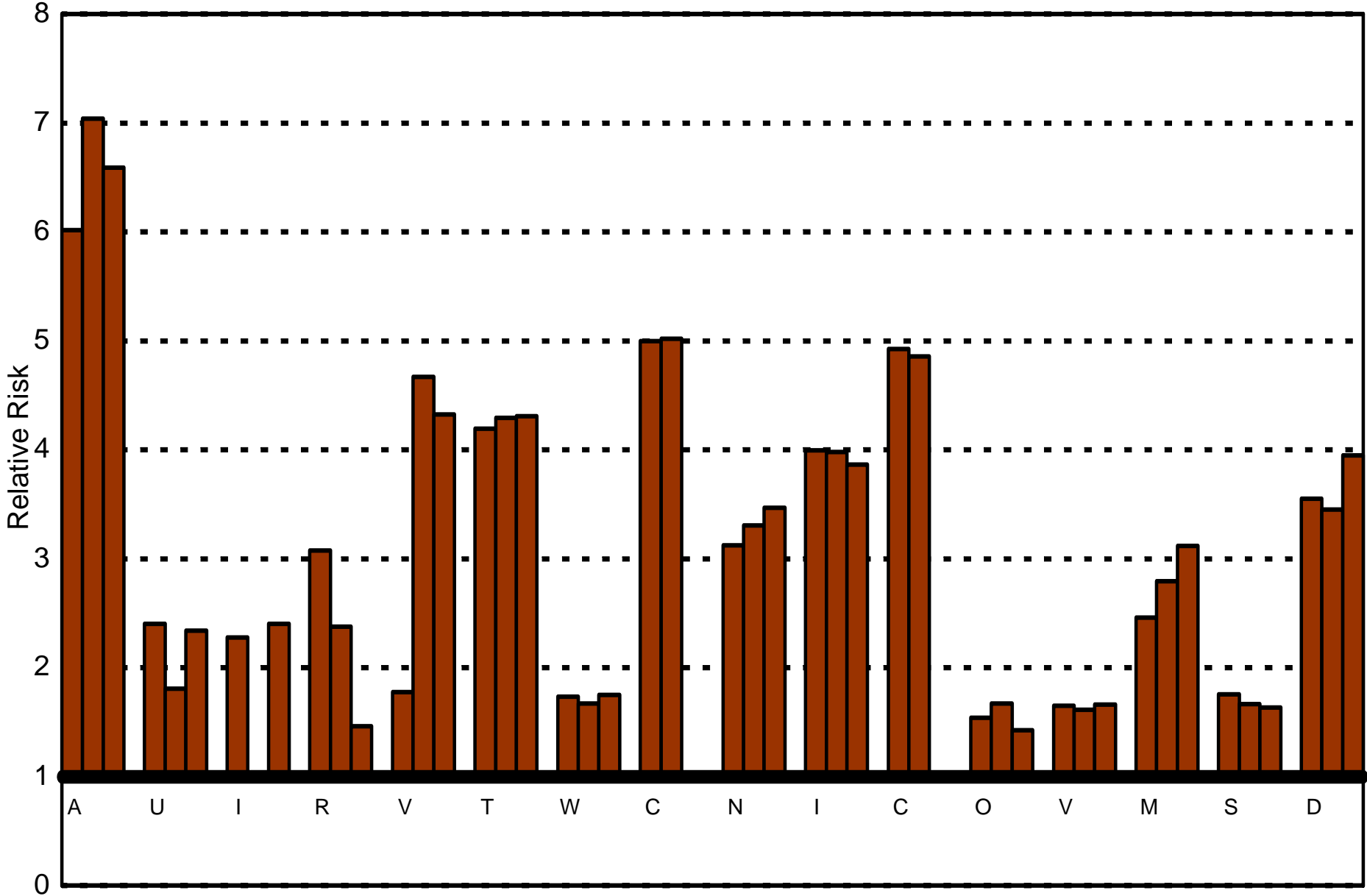
Relative Risk: Male to Female



Relative Risk: Male to Female

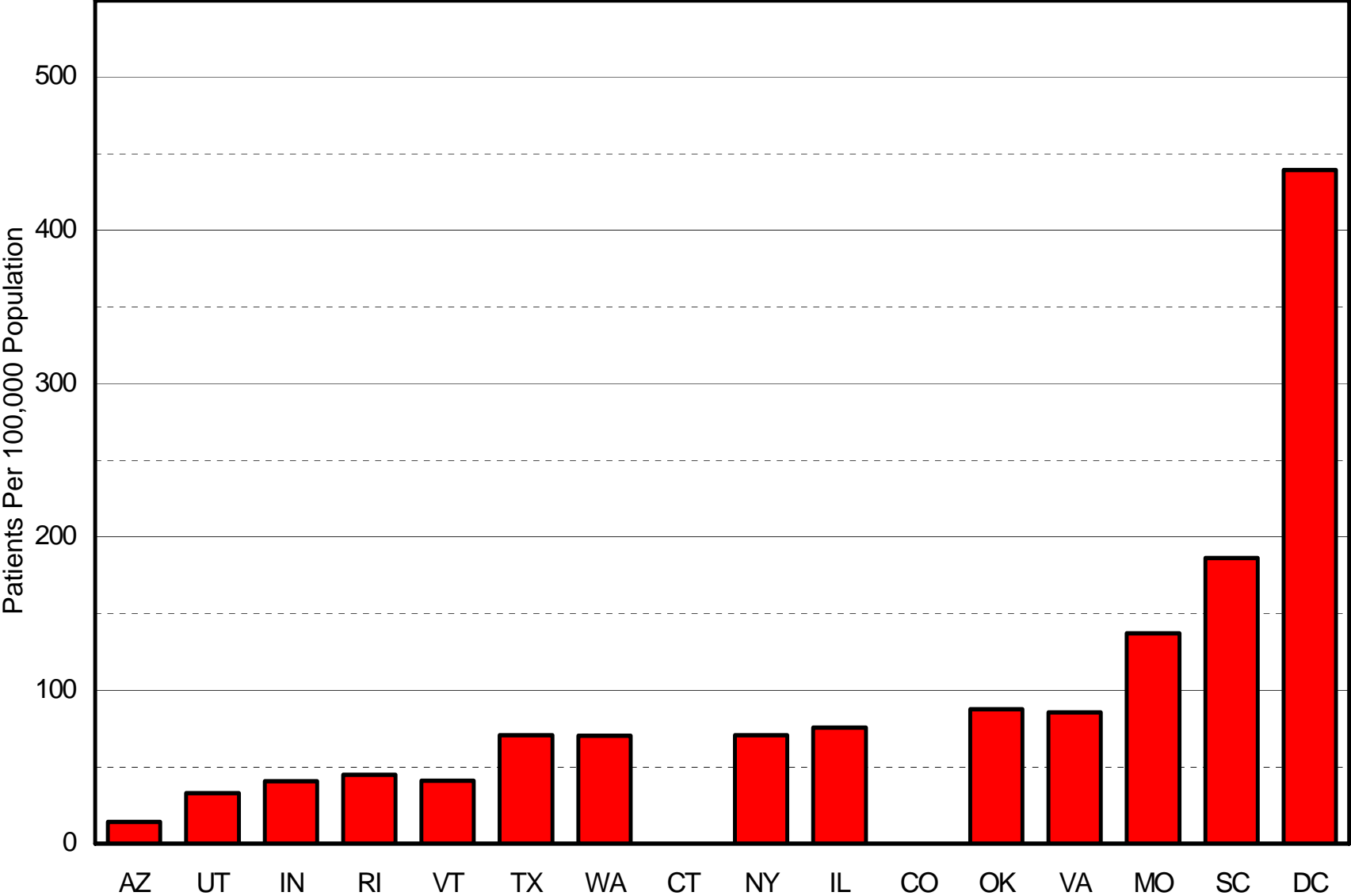


Relative Risk: Non-White to White

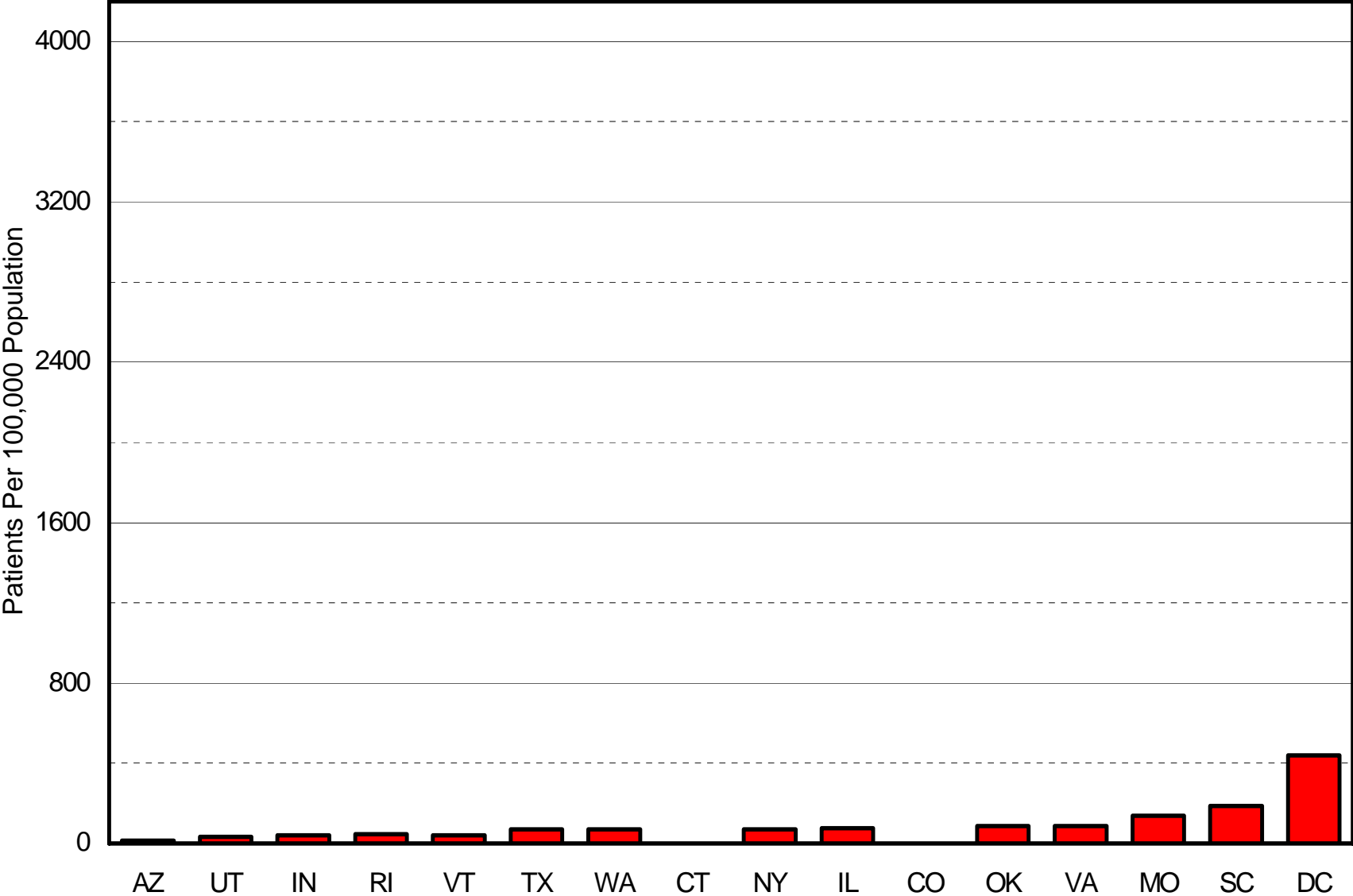


COMMUNITY PROGRAMS

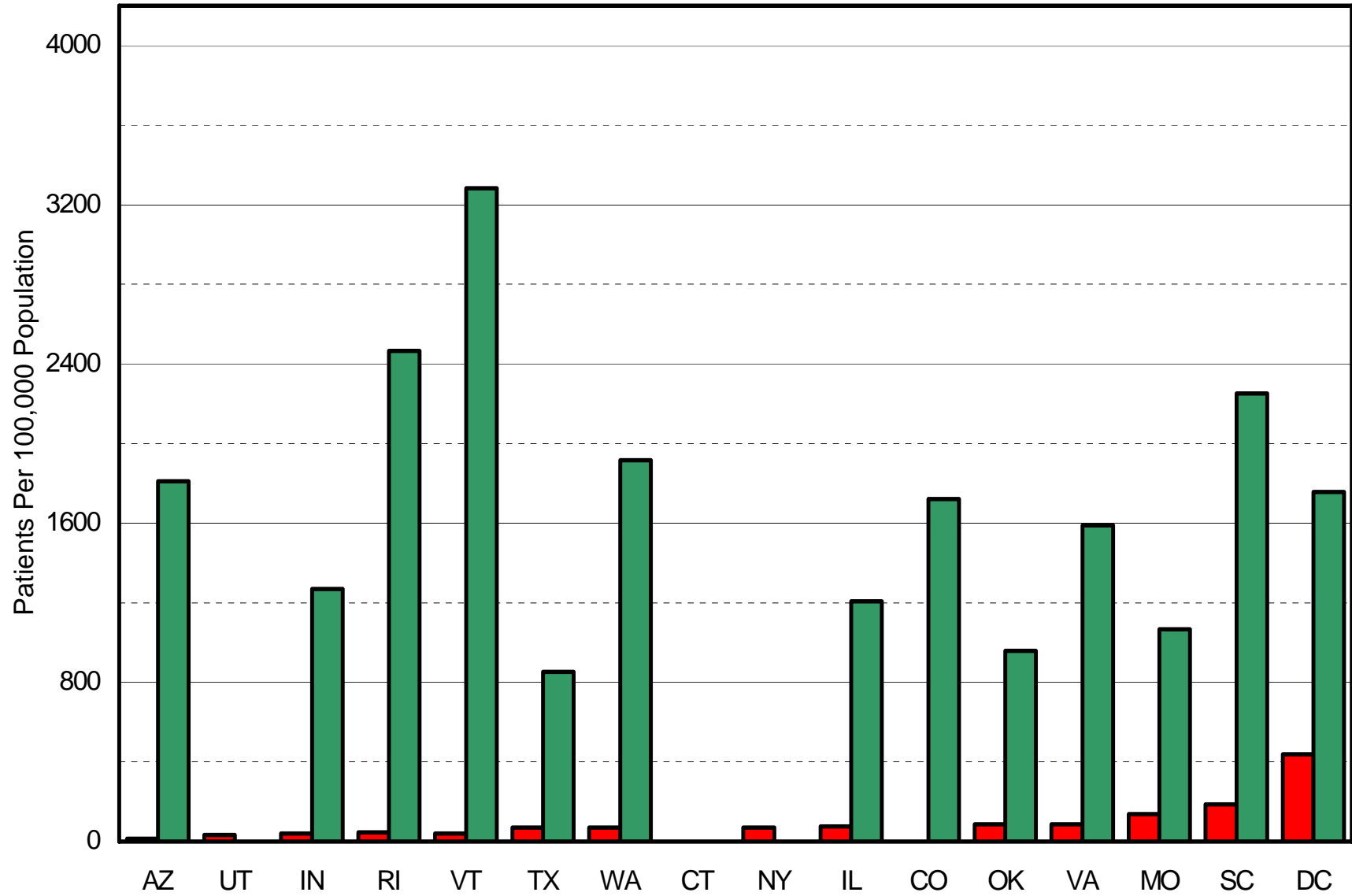
State Hospital Utilization FY2000



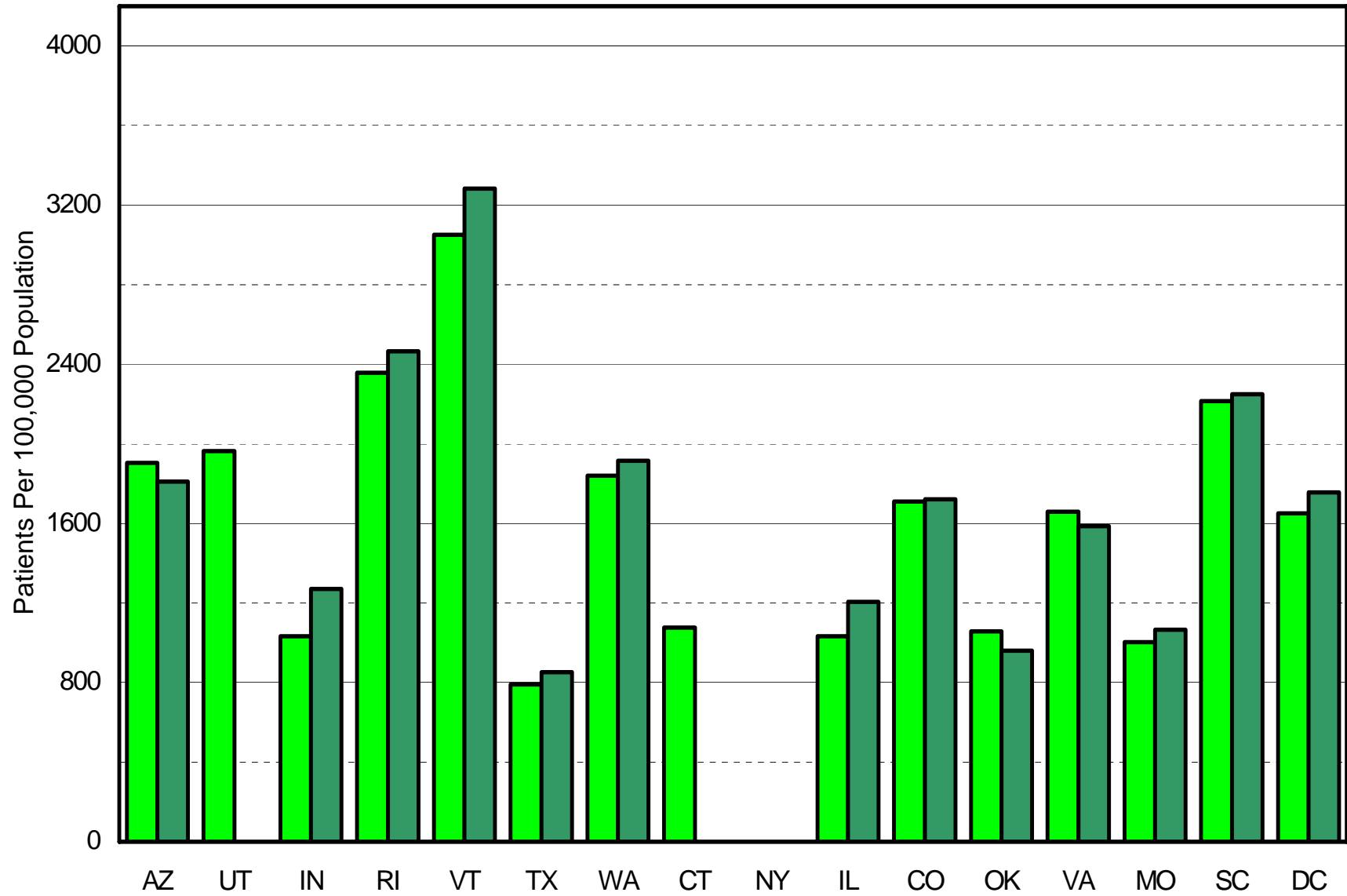
State Hospital Utilization FY2000



State Hospitalization and Community FY2000



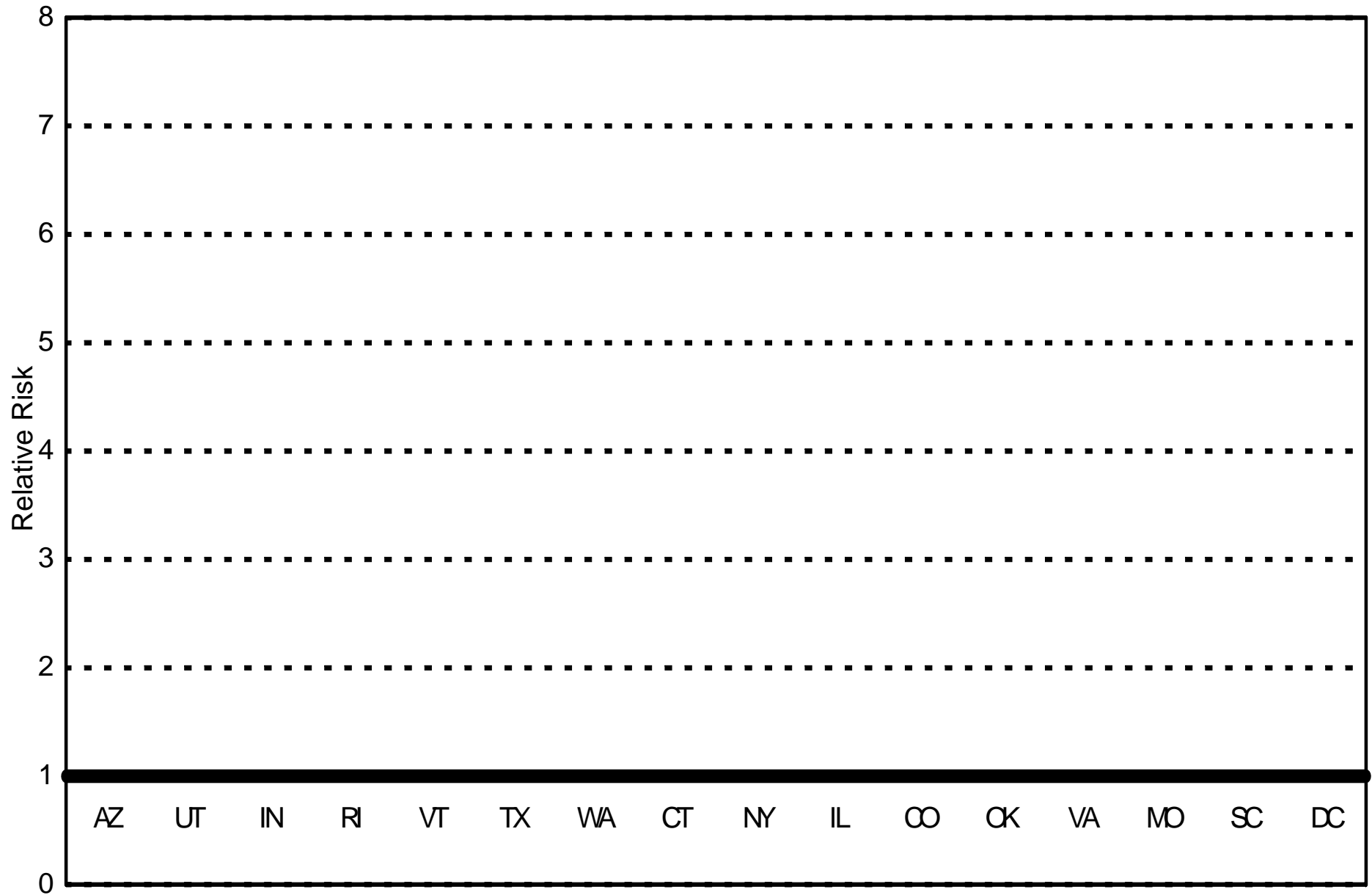
Community Programs : FY 1999 and FY2000



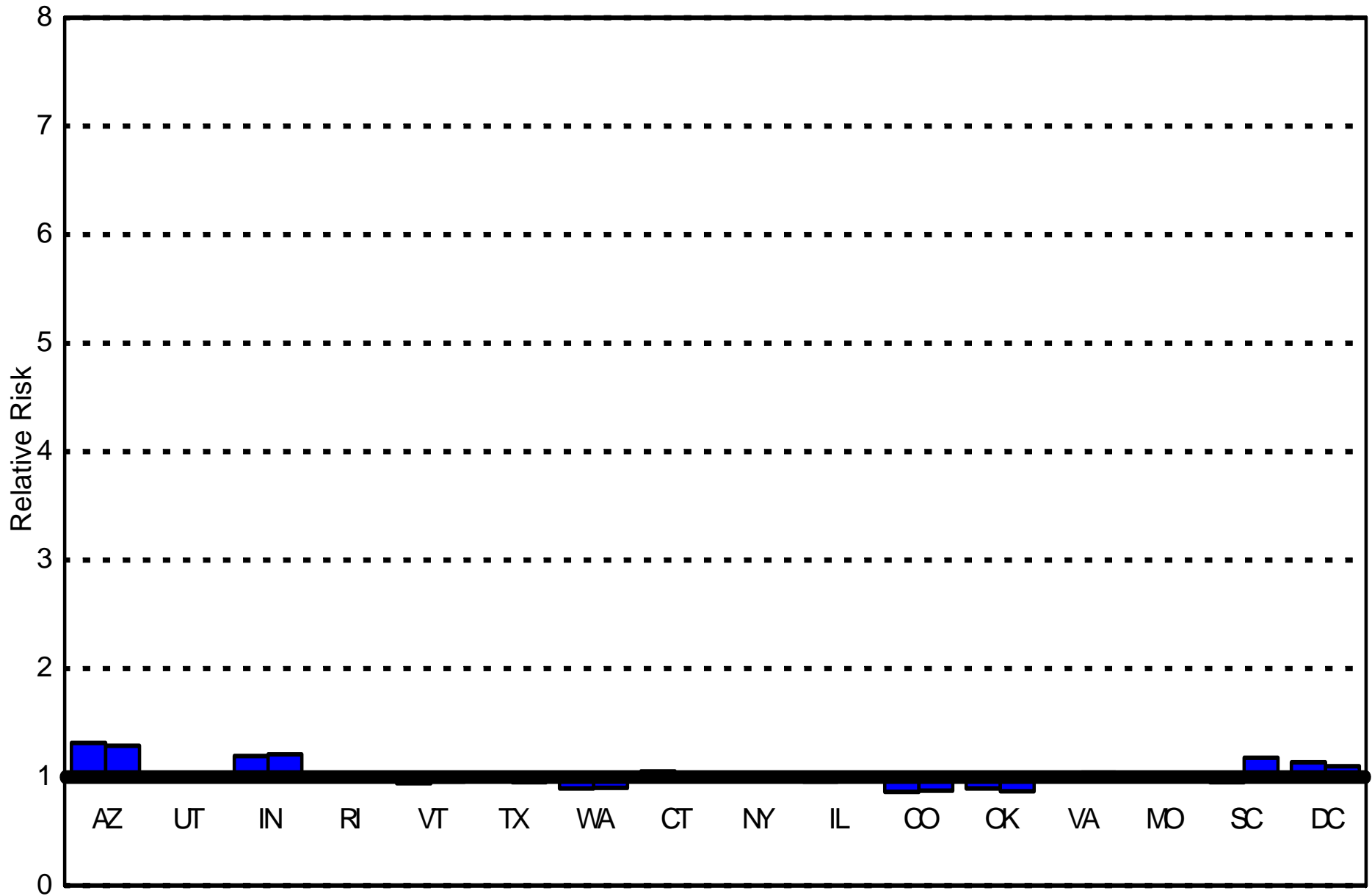
COMMUNITY PROGRAMS
PENETRATION / UTILIZATION

By Gender and Race

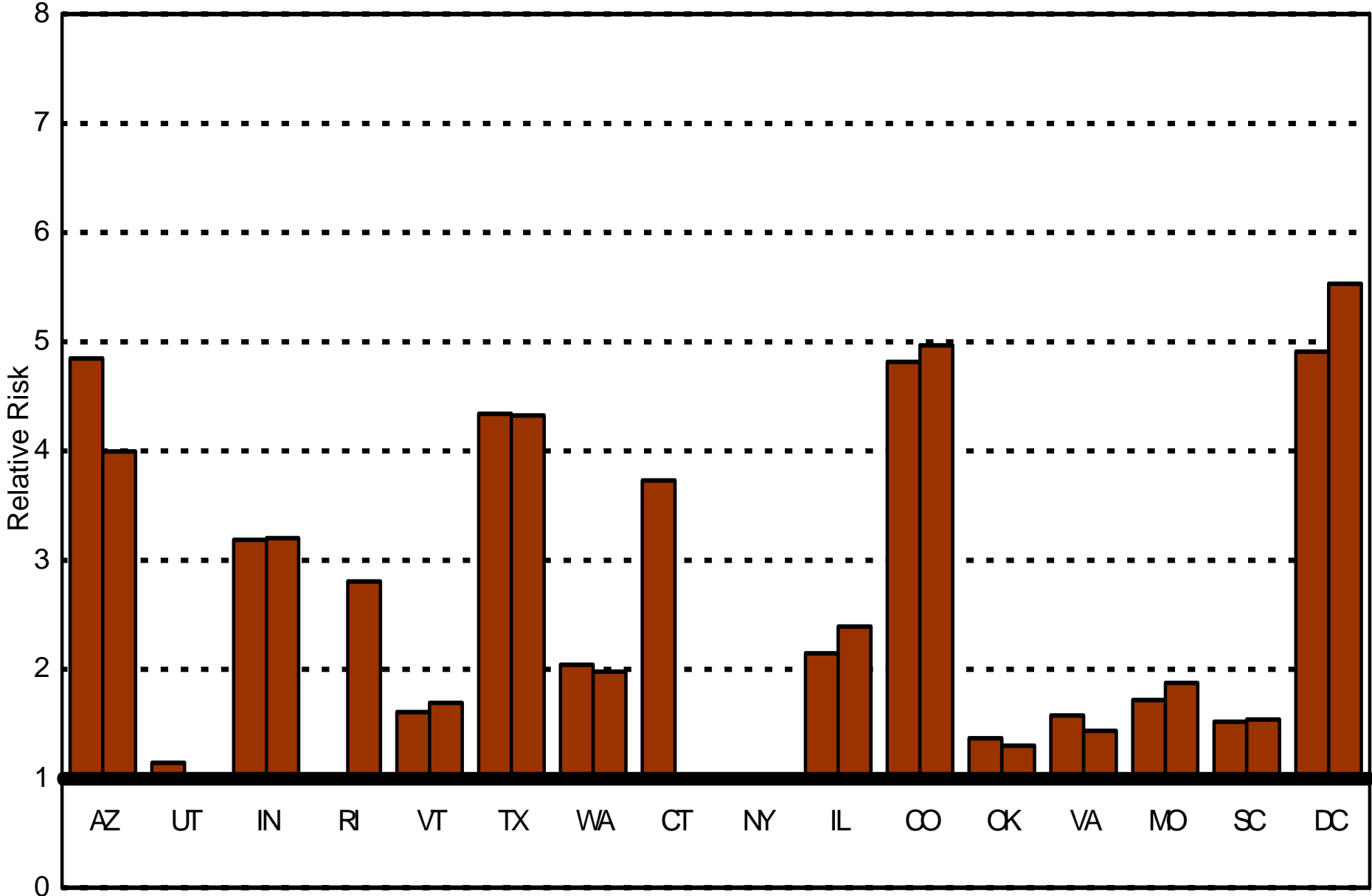
Relative Risk: Male to Female



Relative Risk: Male to Female



Relative Risk: Non-White to White



Issues of Comparability

Unduplication

Across providers & regions?

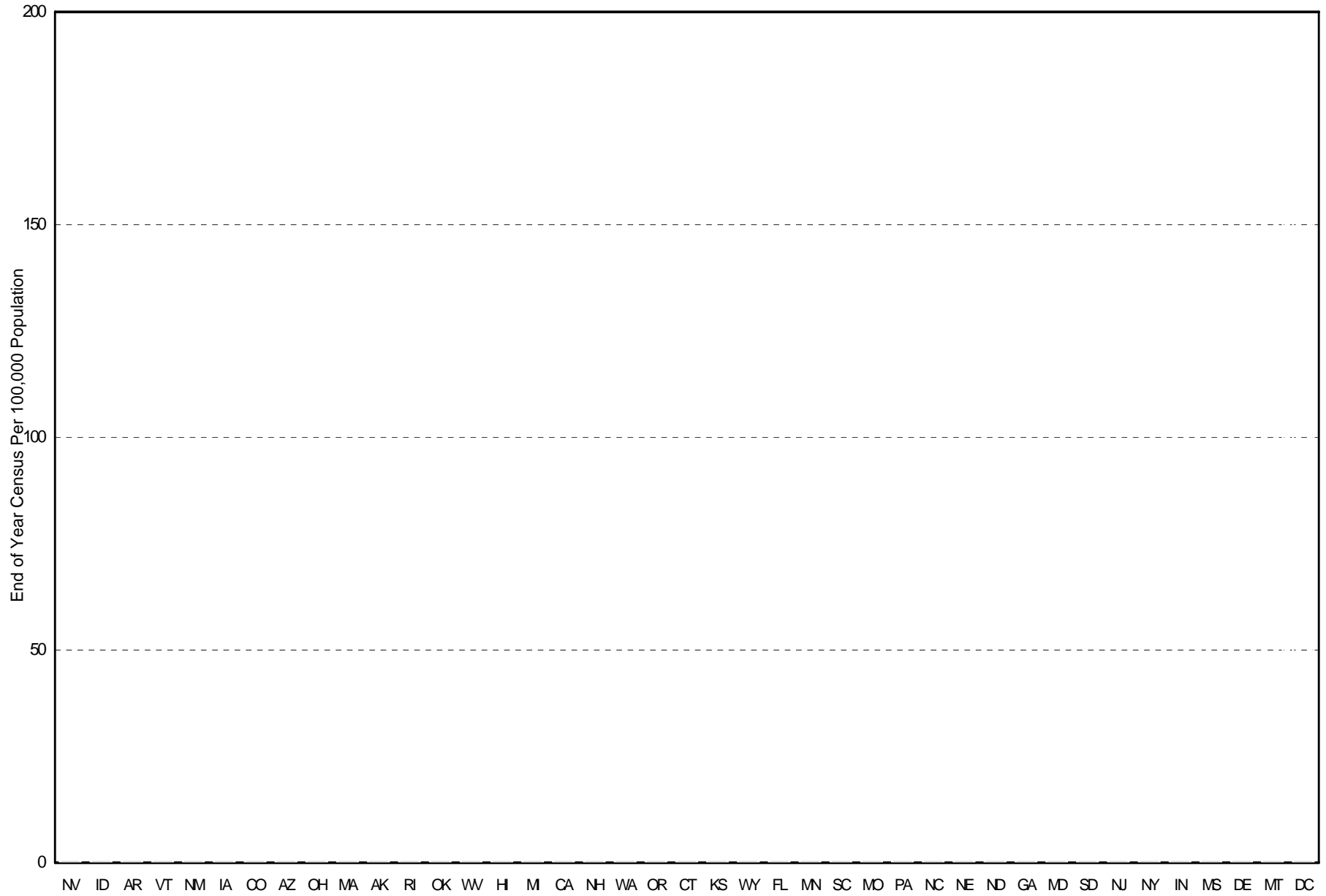
Issues of Comparability

Non-state hospitals?

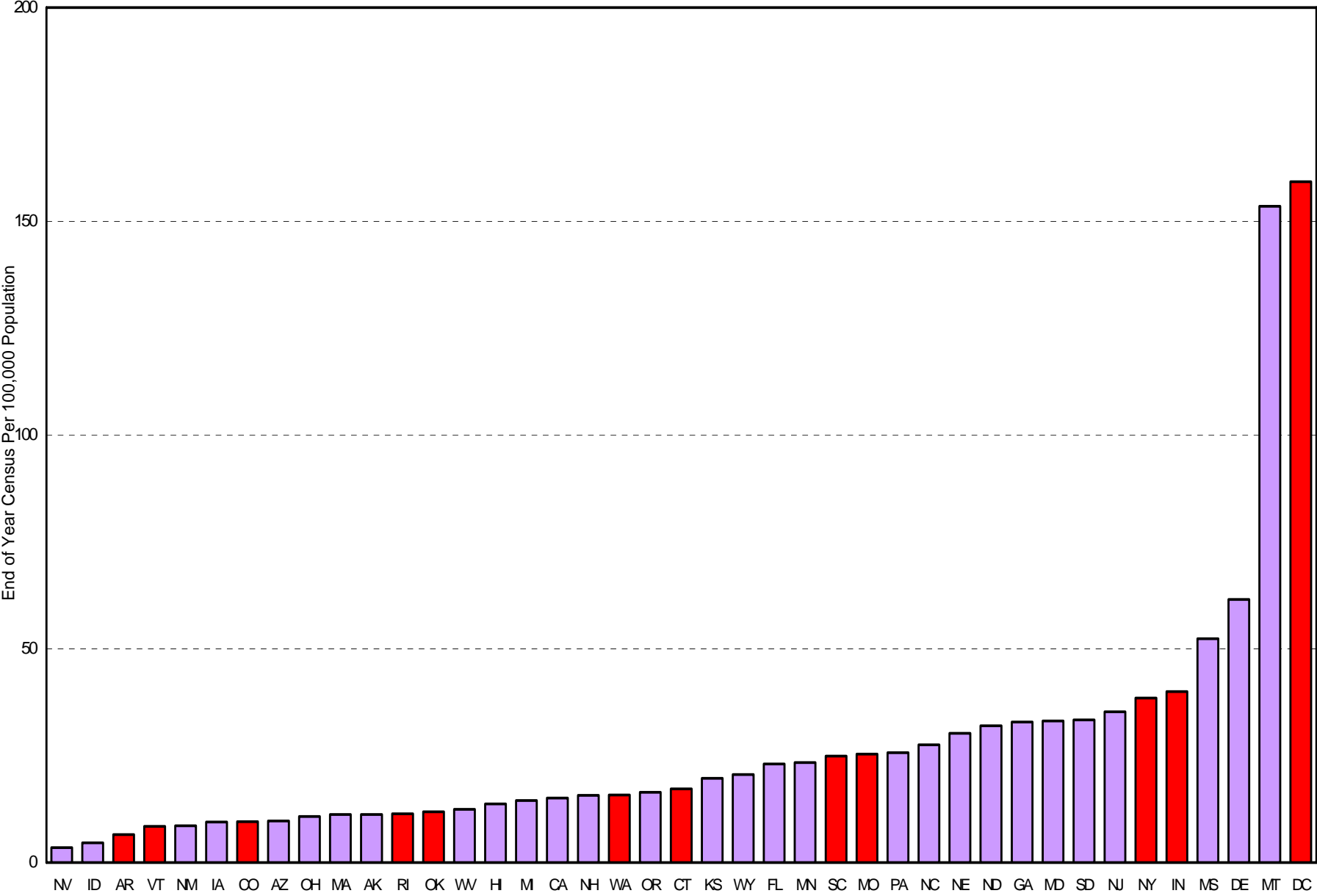
Scope of SMHA authority?

The Future

State Hospital: FY 1998



State Hospital: FY 1998



SAVE

THE DATA

