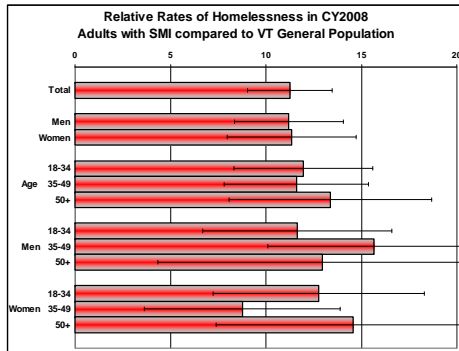
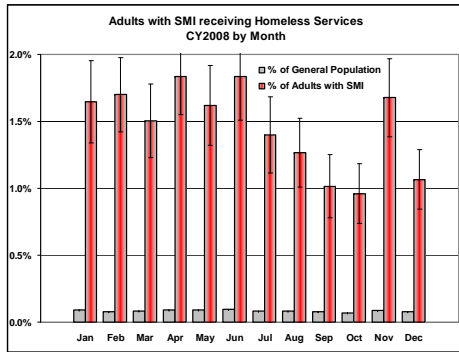


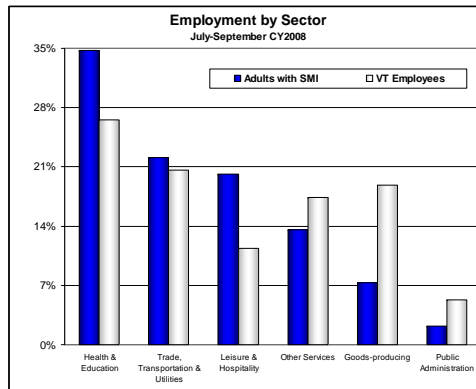
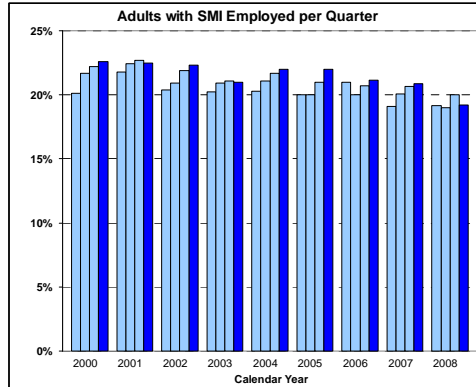
# Vermont's Use of Existing Administrative Databases To Monitor the Functioning of Adults with Serious Mental Illness

## Homelessness

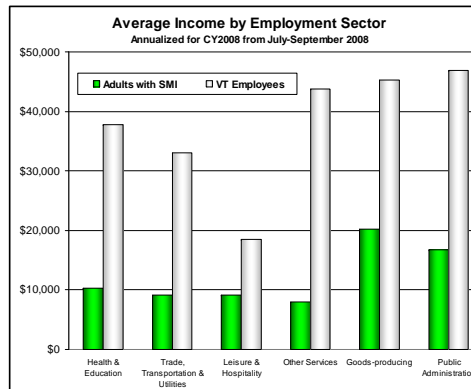
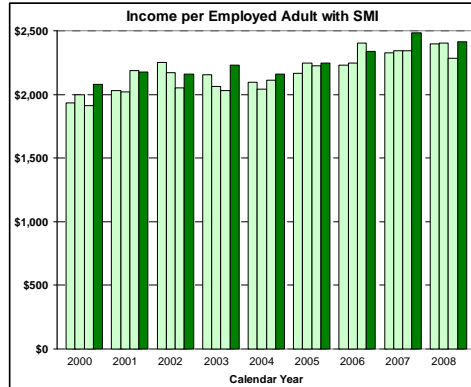


Based on analysis of anonymous extracts from three homeless service databases. One database is maintained by the Vermont Agency of Human Services. The other two databases are maintained by database professionals under contract to Vermont homeless programs. Because these data sets do not include unique person identifiers, Probabilistic Population Estimation was used to determine the number of unique individuals represented in a data set that includes all records from each of the three databases.

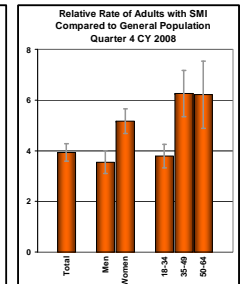
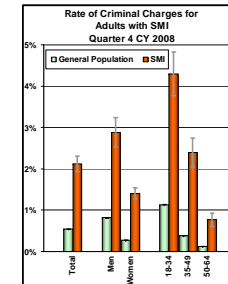
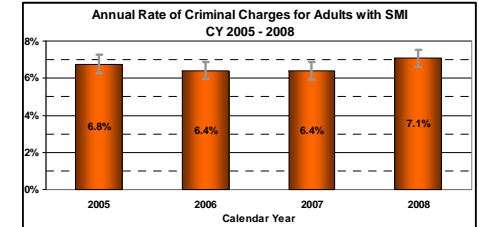
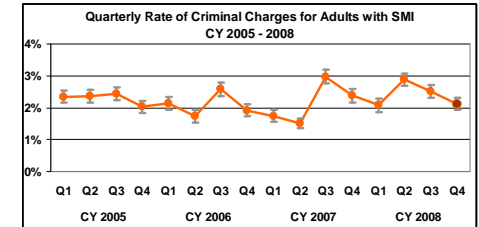
## Employment



Data from direct linkage of extracts from administrative databases maintained by the Vermont Department of Labor and the Vermont Department of Mental Health. Includes adults aged 18-64. Information regarding the employment and income of the general population of Vermont is from the Department of Labor's quarterly Covered Employment and Wages report. Employment sectors are based on the North American Industry Coding System. The "Goods-producing" sector includes Construction, Manufacturing, and Natural Resources and Mining. The "Other Services" sector includes Information, Financial Activities, Professional and Business Services, and Other services except Public Administration.



## Trouble with the Law



Based on analysis of anonymous extracts from databases maintained by the Vermont Center for Justice Research and the Vermont Department of Mental Health. Because these data sets do not include unique person identifiers, Probabilistic Population Estimation was used to determine the number of unique individuals represented in each data set and the number of unique individuals who appeared in both data sets.

## Vermont's Mental Health Performance Indicator Project (PIP)

The Vermont PIP distributes brief data reports via email to a broad community of learners on a weekly basis. All of the findings presented here have been or will be distributed to this community of learners. This community of learners includes consumers, service providers, advocates, researchers, educators, and a broad range of other interested parties. Most findings are based on analysis of anonymous extracts from administrative databases maintained by Vermont state agencies or other relevant organizations. In order to make these findings accessible to this diverse community of learners, all results are provided in graphic, tabular and narrative format. PIP reports do not include any interpretation of findings; rather, these reports invite readers to share their interpretations of findings with the larger community of learners. PIP reports also invite readers to suggest directions for further analysis that may contribute to our understanding of the findings.

All PIP reports distributed since February of 1997 are available online at <http://healthvermont.gov/mh/docs/pips/pip-reports.aspx>

If you would like to be added to the PIP distribution list, please drop your email address in the box. If you have any suggestions for further analyses of these data, please drop them in the box or send them to [pip@vdh.state.vt.us](mailto:pip@vdh.state.vt.us).



For more information, contact:

John A. Pandiani, PhD  
Barbara B. Carroll, EdD  
Brennan D. Martin, MPH

[pip@vdh.state.vt.us](mailto:pip@vdh.state.vt.us)