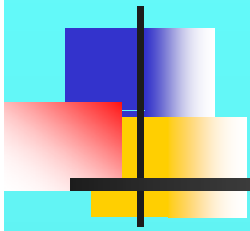


Descriptive Characteristics of Veterans and Individuals with Active Duty Status Receiving Mental Health Services in Illinois



Mary E. Smith, PhD

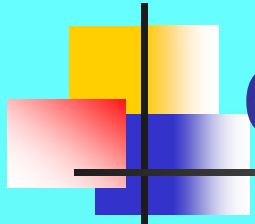
Dorothy Elfring, MPH

Illinois Department of Human Services

Division of Mental health

Data Infrastructure Grantee Meeting

Washington, DC



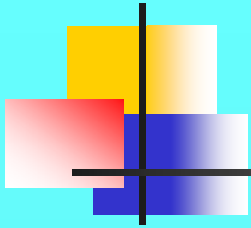
Objectives

- Provide an overview of data reported by DMH funded providers
- Describe Characteristics of veterans and individuals on active military status accessing mental health services
- Discuss future plans for using this data for planning purposes

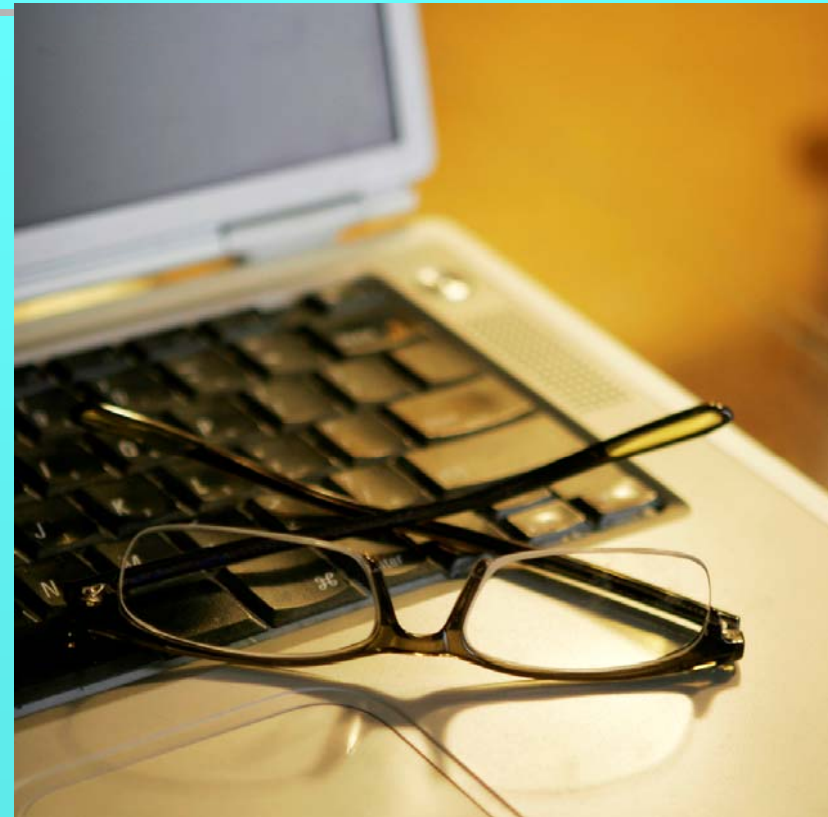


Overview Illinois Mental Health System

- 175 Providers
 - 855 service sites across the state
- 9 State Hospitals and 1 Treatment Detention facility
- 185,000+ individuals received services in FY 2008



Data Collection and Reporting





Data Collection and Reporting

- All providers are contractually required to submit registration and claims/service data for all consumers with services funded using DMH dollars.
- All consumers must be registered before services can be reported (with few exceptions)



Data Collection and Reporting

- Standardized data definitions and file formats provided for reporting
- Data is submitted using third party software or using software developed by state (prior to FY 08); by ASO after FY 09.



Consumer Registration

- Demographic Information
 - Age, Gender, Race/Ethnicity, Hispanic Origin, Living Arrangements, Employment Status, Education Level, Income, Number in Household, Marital Status, Language, Citizenship
- Clinical Information
 - Diagnosis, Functional Impairment, History of Disability, GAF/CGAS
- Other
 - Military Status, Justice System Involvement, Forensic Treatment indicator



Claims/Service Reporting

- Event level information for all services
 - Date, Program, Type of Service, Duration, Mode of Service Delivery, Units etc



Reporting Overview

FY 2008 and Prior

- Providers submitted data weekly at a minimum
- Registration data is static

FY 2009 Forward

- FY 2008 forward—Providers may submit data on a daily basis
- Providers must update information at a minimum every 6 months



Adults Receiving Mental Health Services FY 2008

- Number of adults receiving services: 144,845
- 44% Male
- Race/Ethnicity:
 - Caucasian: 66%;
 - African-American: 25%
 - Hispanic Origin: 8%
- 79% live in private residences
- 32% Employed (excluding those “not in labor force”)



Military Status Reporting



Military Status Reporting

- MHSIP (FN-10)
- Reported on Registration
- Required data element
- Military Status Values
 - Veteran
 - Active Duty
 - Non-Veteran



Registration Data - Fiscal Year 2008

Of the 128,693* adults with the military status field completed in their registration, 3,427 or 3% were reported as veterans and 119 were listed as active duty.

11 % (1,003,572) of the adult population residing in Illinois are veterans



***Data was reported for 91% of adult consumers registered for treatment**



Age and Gender



	Veteran	Active Duty	Non-veteran
Male	86%	65%	43%
18-20	1%	13%	7%
21-44	36%	52%	54%
45-64	52%	29%	35%
65+	12%	7%	4%
Mean Age	49	38	40

Race/Ethnicity

	Veteran A (%)	Active Duty B (%)	Non-vet C (%)
White	75.1 c	79 c	66.8
Black	21.1	15.1	24.8 AB
Asian	.4	0	1.1 A
Amer./Alaskan Indian	.5 c	0	.3
Native Haw./Other	.1	0	.1
Multi-Racial	.1	.8	.2
Unknown	2.7	5	6.8



Family Size

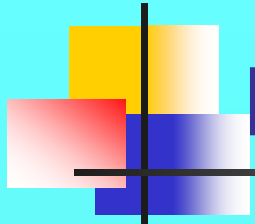
	Veteran (%)^A	Active Duty^B (%)	Non- veteran^C (%)
Lives Alone	48.5 ^C	39.5	37.3
2-5	33.7	45.4 ^A	38.1 ^A
6-10	2.4	1.7	3.1
Unknown	15	13.4	21.2



Employment Status

	Veteran ^A	Active Duty	Non-Vet
	%	^B (%)	^C (%)
Employed	20.8	41.2 ^{AC}	20.2
Unemployed	39.8	36.1	42.2 ^A
Not in labor force	28.2 ^C	19.3	24.3
Not Available	11.3	3.4	13.3

Significant <0.05



Employment status

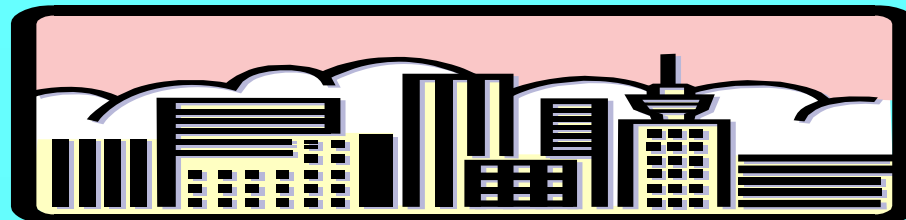
The percentage of veterans and non-veterans who were unemployed and not in the labor force was similar: 65.7% to 68%.

Educational Background

	Veteran ^A	Active Duty ^B	Non-Vet ^C
	%	%	%
<H.S.	13.8	12.6	24.9 _{AB}
H.S Diploma	41.8 _C	43.7	34.8
College/ Training	27 _{BC}	16	16.9
College Degree	6 _C	9.2 _C	4.5
Grad. Degree	2.2 _C	2.5	1.5

* Significant <.05

Living Situation



	Veteran ^A (%)	Active Duty ^B (%)	Non-vet ^c (%)
Private Residence	76.0	79.0	81.0 ^A
Residential Care	7.9 ^c	5.0	5.1
Institution	2.8 ^c	0	1.5
Jail/Correct. Facility	1.0 ^c	2.5 ^c	.6
Homeless/ Shelter	7.5 ^c	4.2	4.6
Other	1.7	1.7	1.6

Significant <0.05

Justice System Involvement

	Veteran _A (%)	Active Duty _B (%)	Non-vet _C (%)
Arrested	1.3 _c	.8	.8
Charged w/Crime	4.2 _c	1.7	2.4
Incarcerated (jail)	1.1 _c	1.7	.7
Incarcerated (prison)	.3	0	.2
Other	2.7 _c	.8	1.8

* Significant <0.05

Total Household Income

	Veteran (%)	Active Duty (%)	Non- Veteran (%)
None	32.7	27.7	40.9 _{AB}
<\$15,000	39.6 _c	50.4 _c	36.2
\$15,001- \$40,000	6.5 _c	2.5	3.4
\$40,001 +	2.0 _c	3.4	1.2
Unknown	19.2	16	18.4



Target vs Eligible Population*

Veterans were more likely to have a serious mental illness (59.5% vs. 55%) as determined using Illinois specific criteria of a combination of functional impairment, history of disability and diagnosis.

***Target = Individuals with a serious mental illness**



Diagnosis and Military Status

- Veterans were more likely to have diagnoses falling in the following groupings:
 - Schizophrenia & related disorders
 - Other “target” diagnosis like OCD, etc
- Veterans were more likely to have a co-occurring substance use diagnosis.

Primary Axis 1 Diagnosis Grouping and Co-Occurring SUD

Diagnosis	Veteran ^A	Active Duty ^B	Non-Vet ^C
Schizophrenia & related disorders	20.6 _{BC}	10.1	14.4
Bipolar & Major Mood Disorder	43.4	42.0	44.3
Depressive Disorders	8.2	12.6	11.7
Other Psychoses	2.7	0.8	3.8
Other Target Diagnosis	5.6 _C	8.4	3.8
All Other Diagnosis	17.4	21.0	20.4
Co-occurring SUD	15.5 _{BC}	11.8	13.1



Post Traumatic Syndrome Disorder

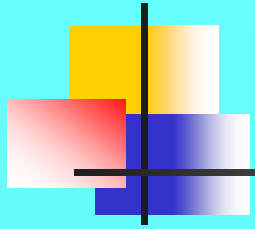
- 3.8% of adults seen for treatment had a PTSD.
- 4% of these individuals were veterans or were reported as being on active duty.
- However, 6% of veterans and 8% of active duty persons had a PTSD compared with 3.6% of the remaining adult population.



History of Illness & Functioning

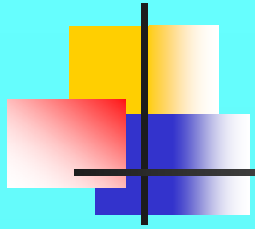
Veterans were more likely to have:

- one or more previous contacts with the mental health system.
- one or more determinations of impairment in 8 domains including: employment, financial, community living, etc



Service Utilization

Veterans were more likely to use outpatient services and residential services than other adults receiving services.



Summary

- Veterans comprise 11% of the population of Illinois. They represent 3% of the adults receiving services from DMH funded community providers.
- While Veterans are more likely to have problems with co-occurring SUD and functioning; they have more training and education than other adults receiving services.



Where Do We Go From Here?

- Work on improving quality of data
(91% reporting rate isn't bad, but it can be improved)
- Additional analysis on service utilization
- Assess and track changes on key variables across time
- Provide decision support for DMH planning efforts
- Provide support for SAMHSA Veterans Reintegration Grant

