

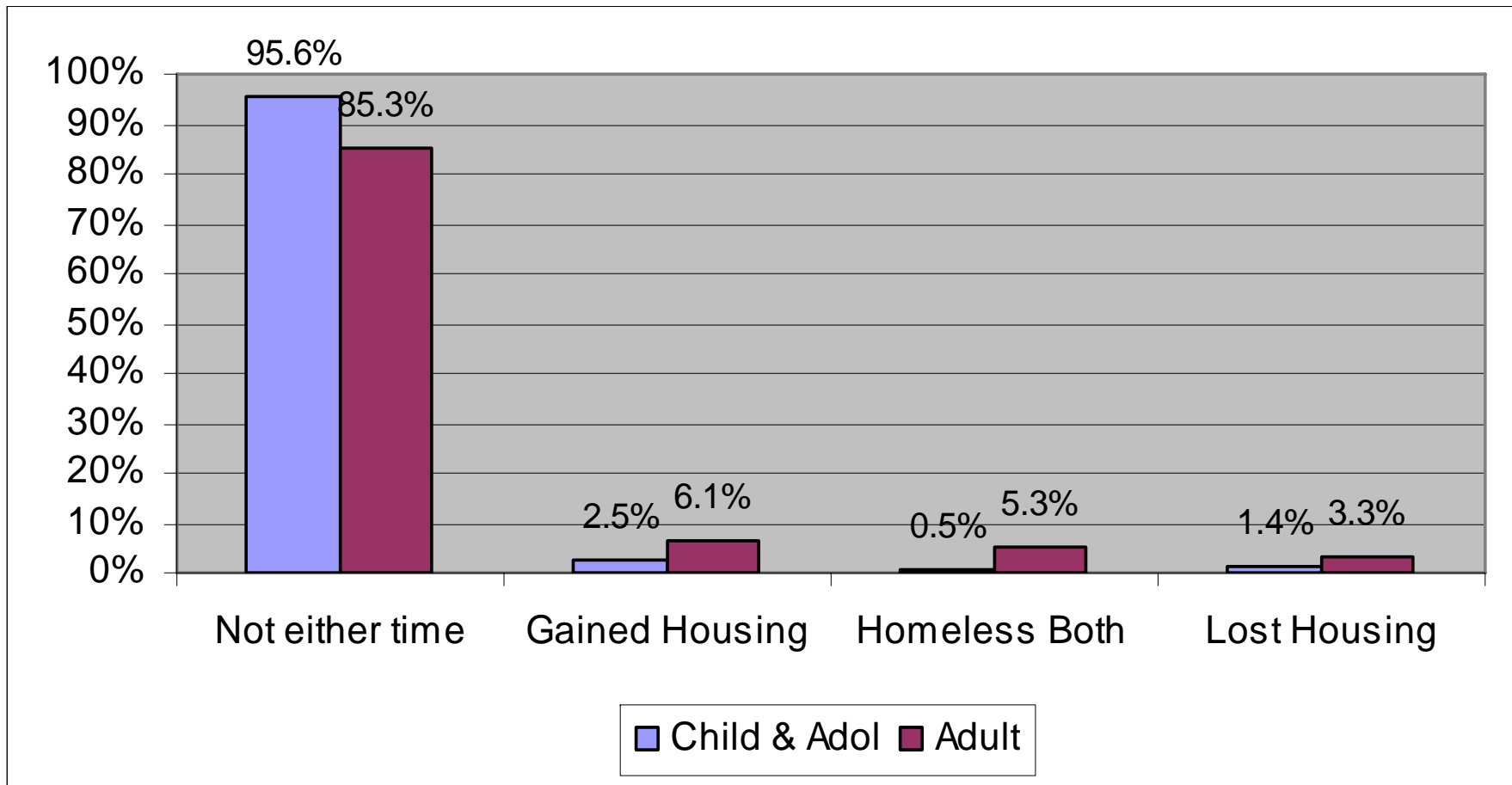
Collection and Analysis Individual level NOMS data

State of Maryland

Notes

- Individual level data collection began 9/06
- Inclusion criteria
 - Same age group (Child or Adult)
 - Same provider
- Limited number of consumers to those with initial and most recent observations
- Data based on consumer responses and perceptions
- Collected by outpatient organizational providers

Changes in Homelessness Initial vs. most recent OMS



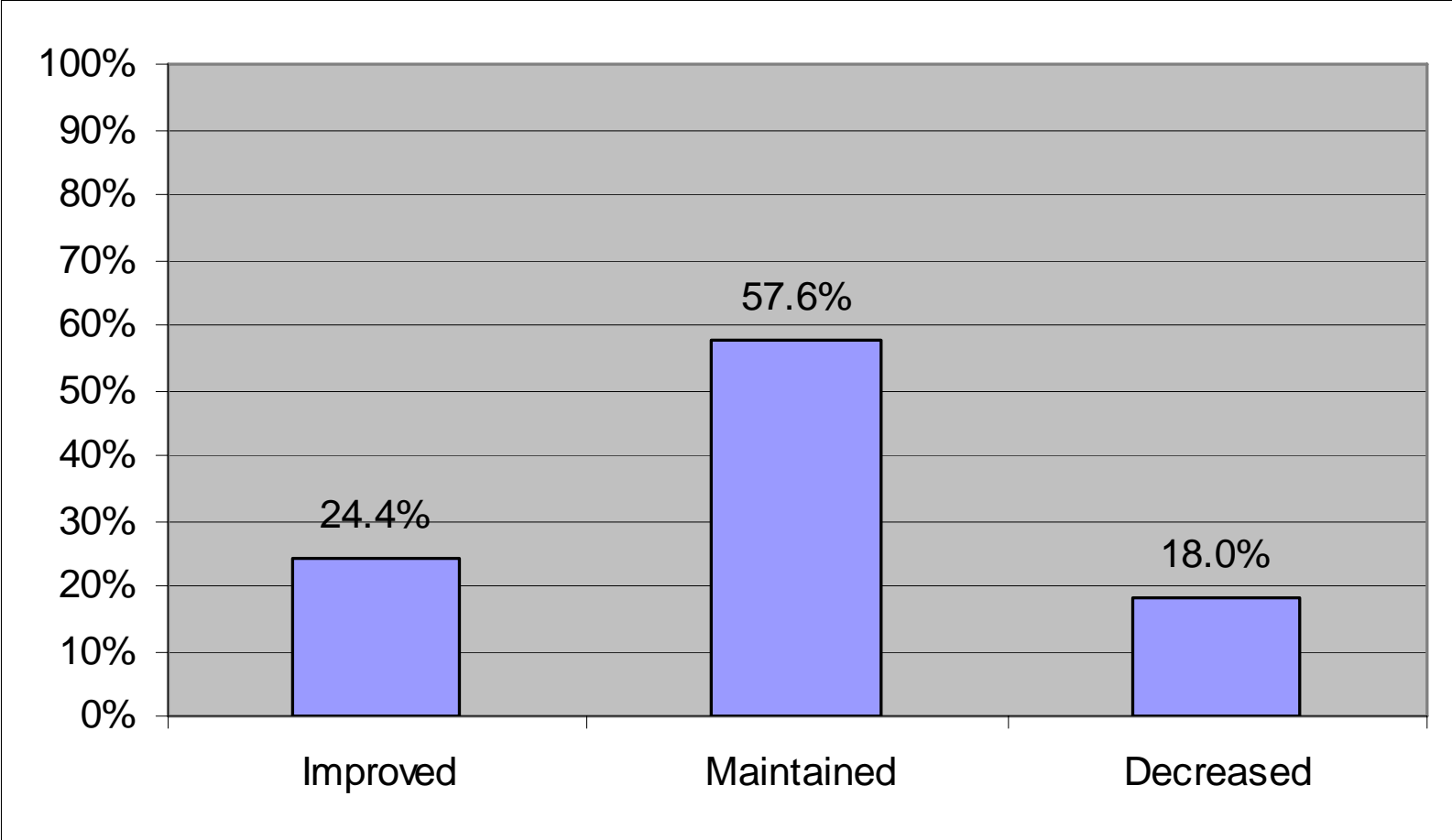
Questions included in Adult Functioning

- I do things that are meaningful to me
- I am able to take care of my needs
- I am able to handle things when they go wrong
- I am able to do things that I want to do
- My symptoms bother me

How Functioning and Caregiver Social Connectedness is Scored

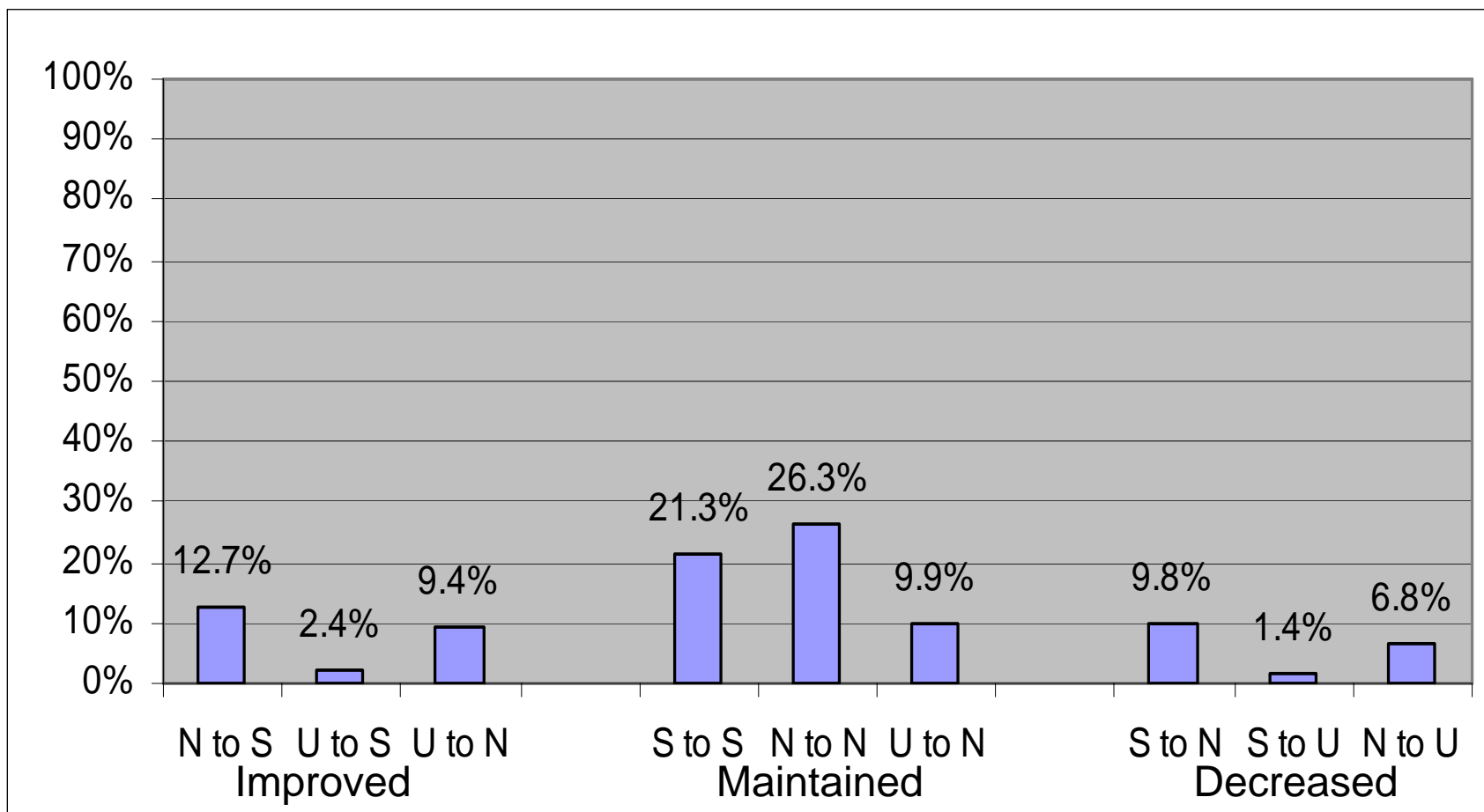
- 1 (Strongly Agree) to 5 (Strongly Disagree)
- Include only those with 2/3 or more valid responses
- Reverse adult symptom coding
- Calculate average of valid responses
- Average Categories:
 - 1 to 2.49=Satisfied
 - 2.5 to 3.49=Neutral
 - 3.5 to 5=Unsatisfied

Changes in Functioning: Adults Initial vs. most recent OMS



Based on Federal National Outcome Measure Calculations

Changes in Functioning: Adults Initial vs. most recent OMS

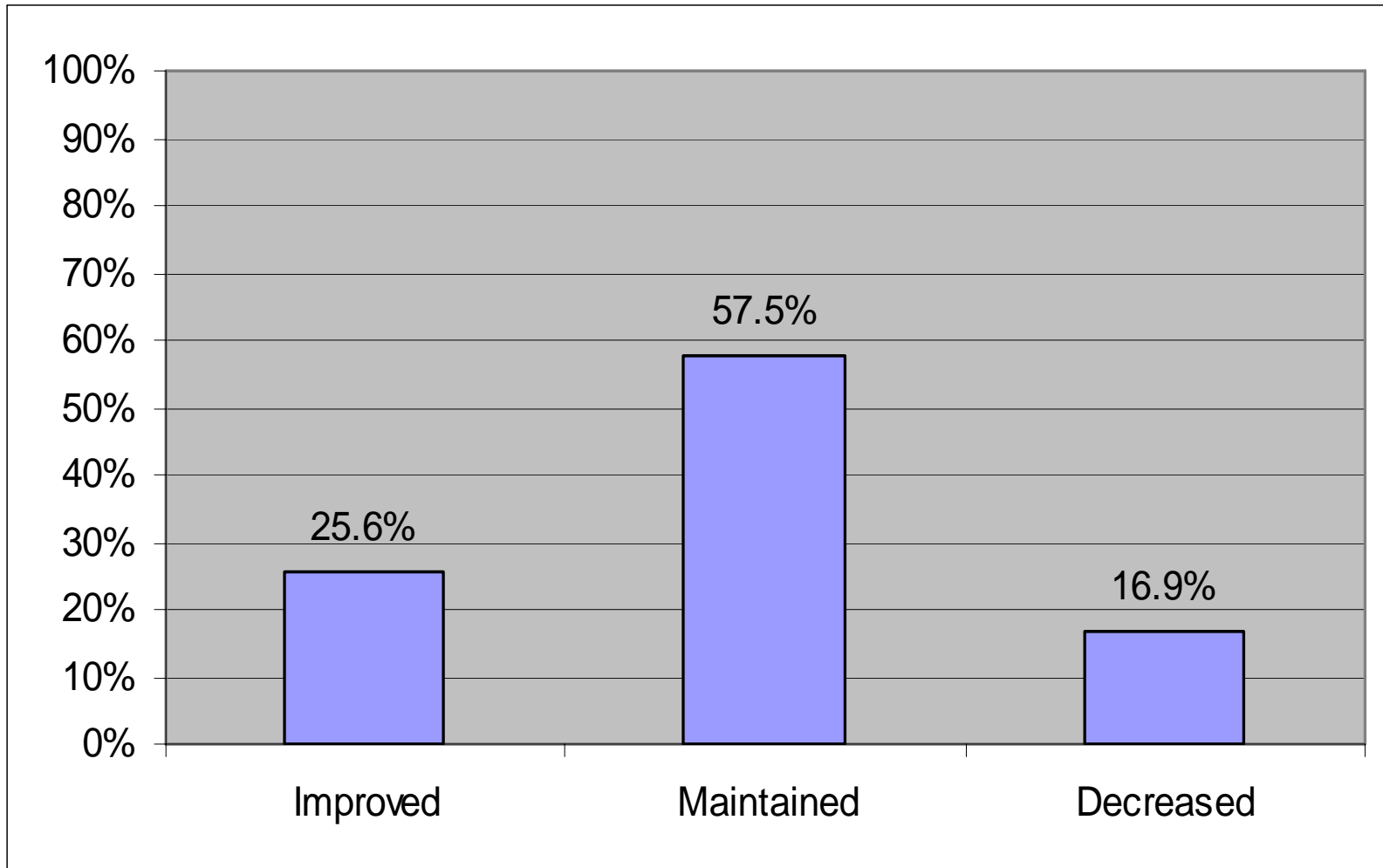


Based on Federal National Outcome Measure Calculations
S=Satisfied N=Neutral U=Unsatisfied

Questions included in Child and Adolescent Functioning

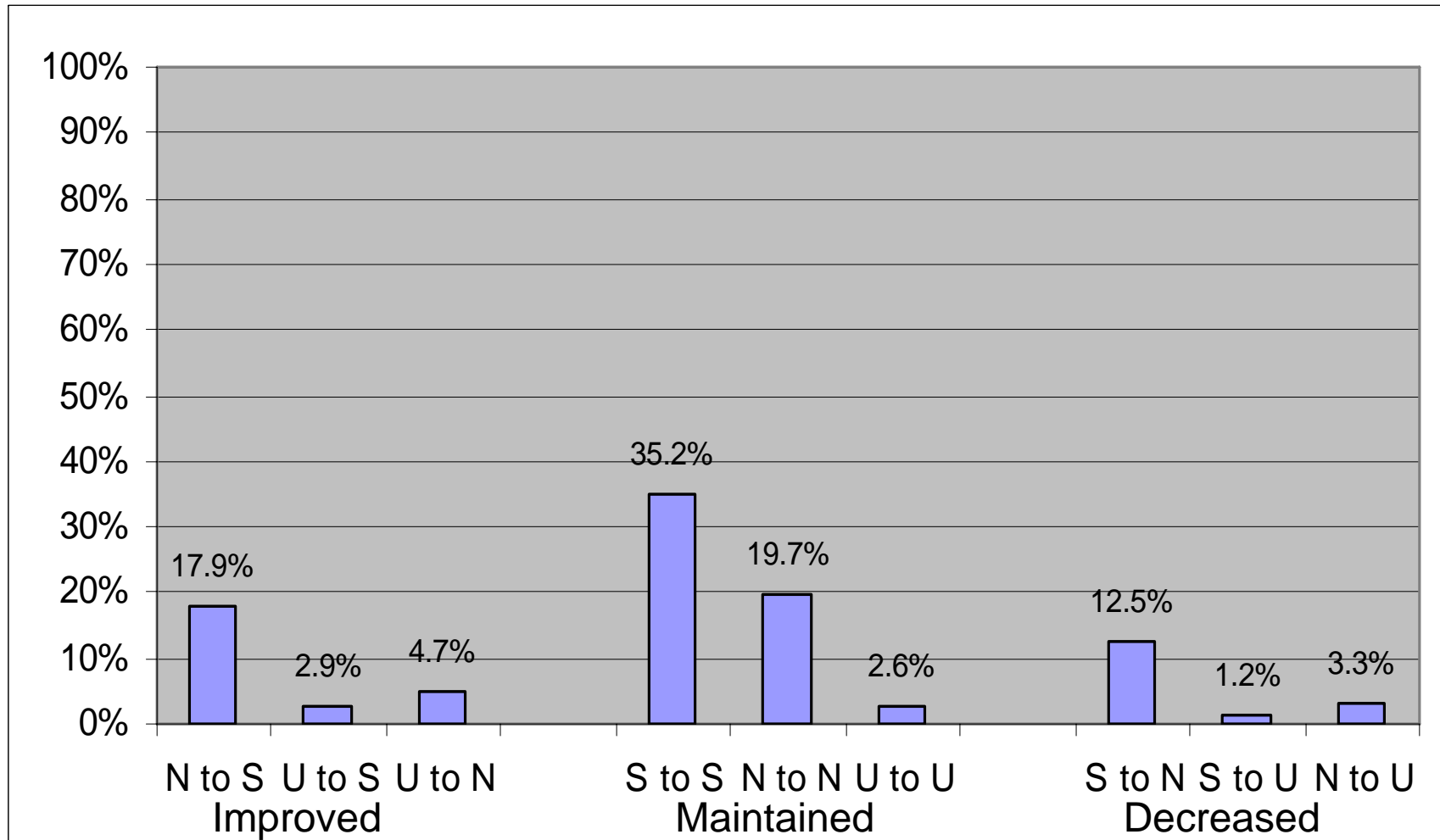
- I am able to handle my daily life
- I get along with family members
- I get along with friends, other people
- I am better able to cope when things go wrong
- I am able to do things that I want to do

Changes in Functioning: Child and Adolescent Initial vs. most recent OMS



Based on Federal National Outcome Measure Calculations

Changes in Functioning: Child and Adolescent Initial vs. most recent OMS



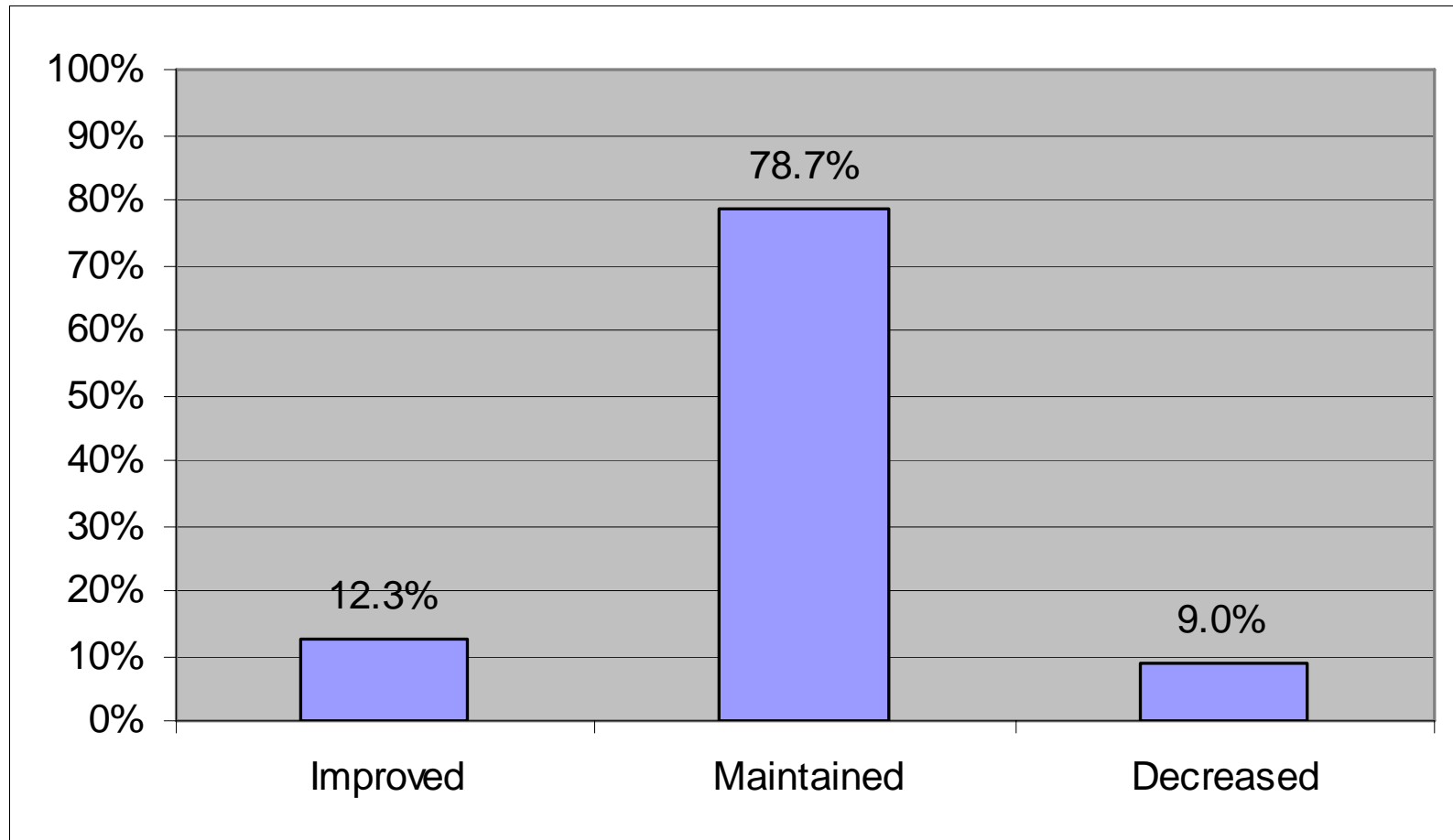
Based on Federal National Outcome Measure Calculations

S=Satisfied N=Neutral U=Unsatisfied

Questions included in Caregiver Social Connectedness

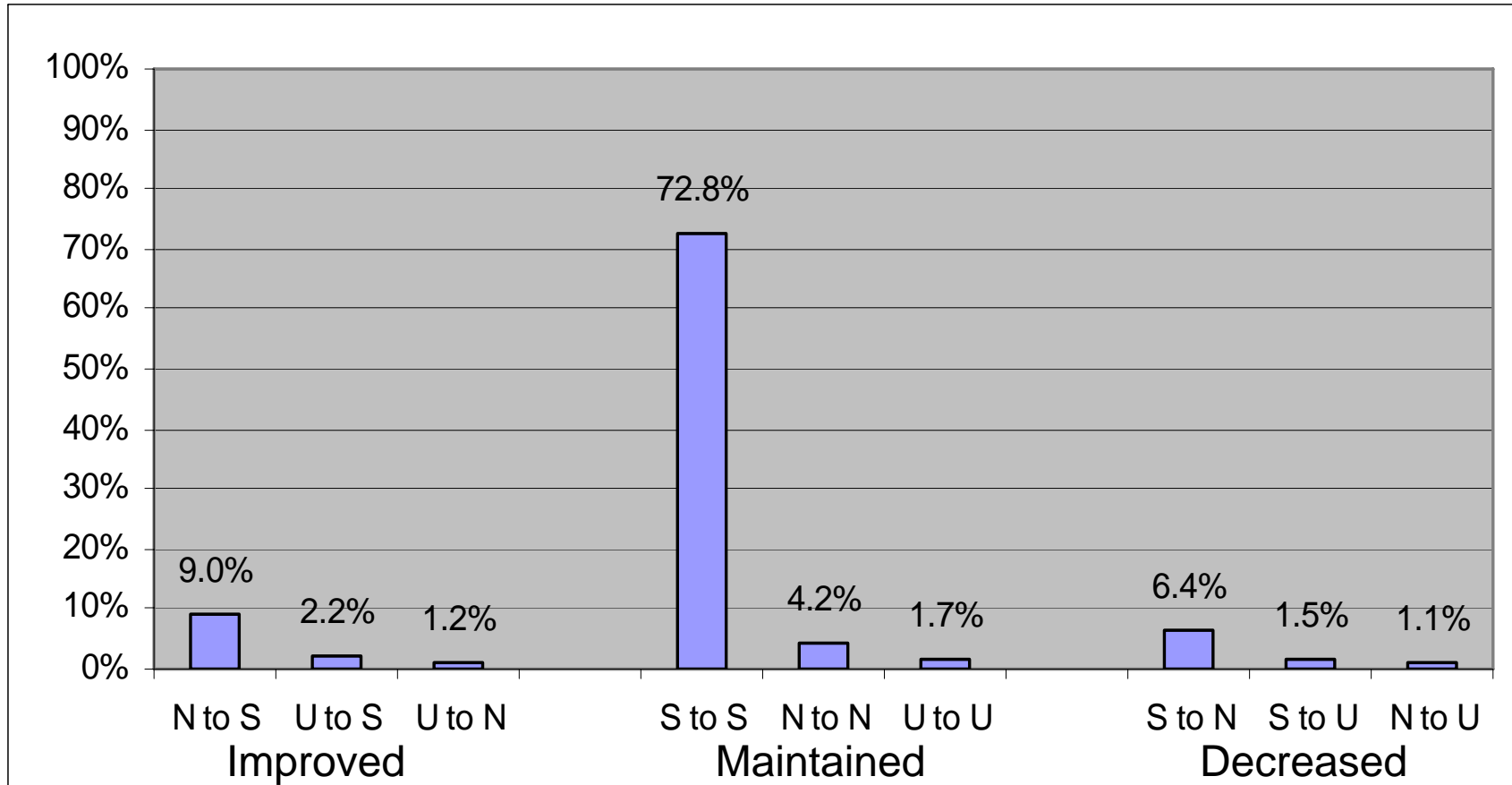
- I know people who will listen and understand me when I need to talk
- I have people that I am comfortable talking with about my child's problems
- In a crisis, I would have the support that I need from family or friends
- I have people with whom I can do enjoyable things

Changes in Caregiver Social Connectedness Initial vs. most recent OMS



Based on Federal National Outcome Measure Calculations

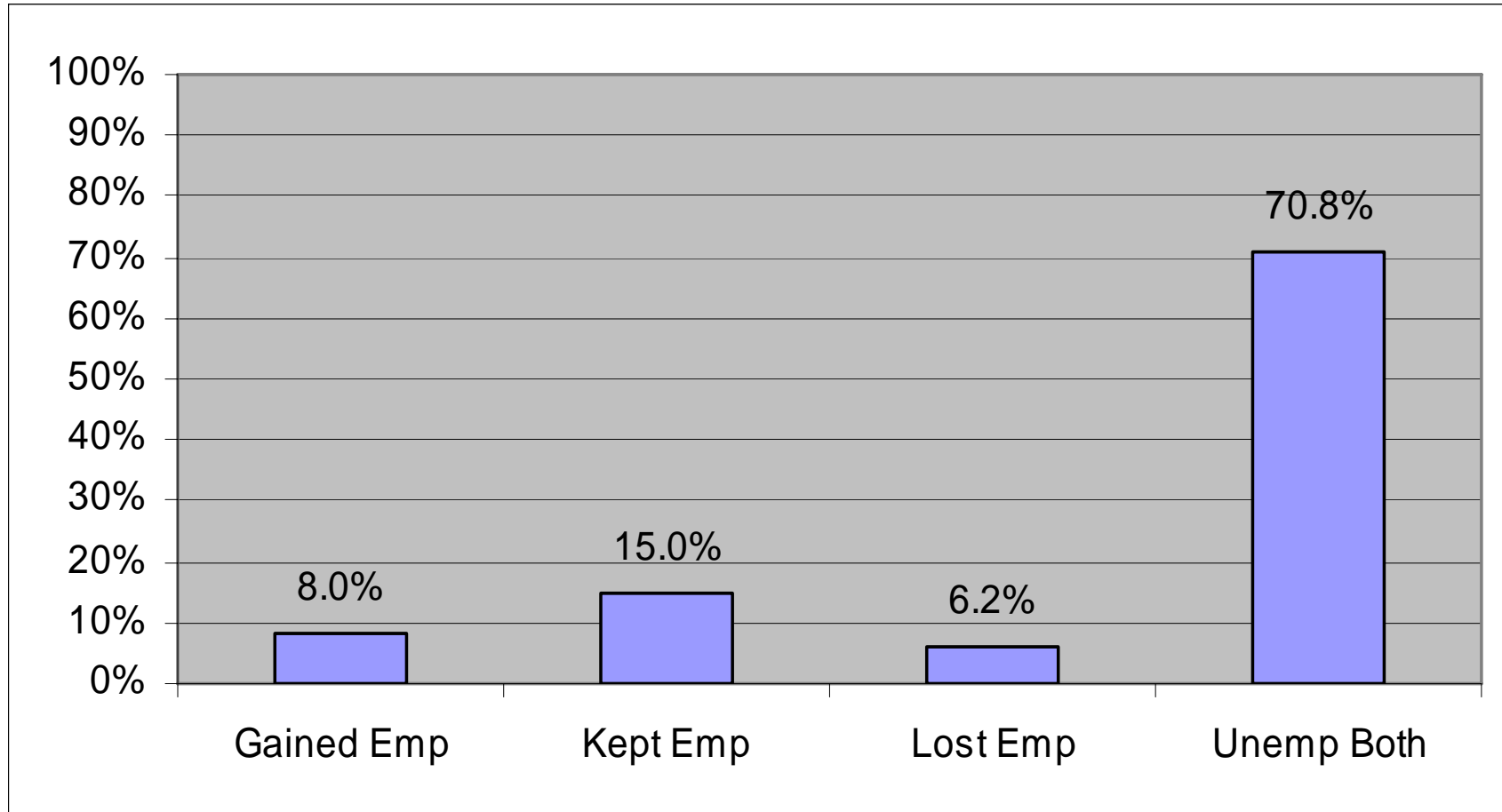
Changes in Caregiver Social Connectedness Initial vs. most recent OMS



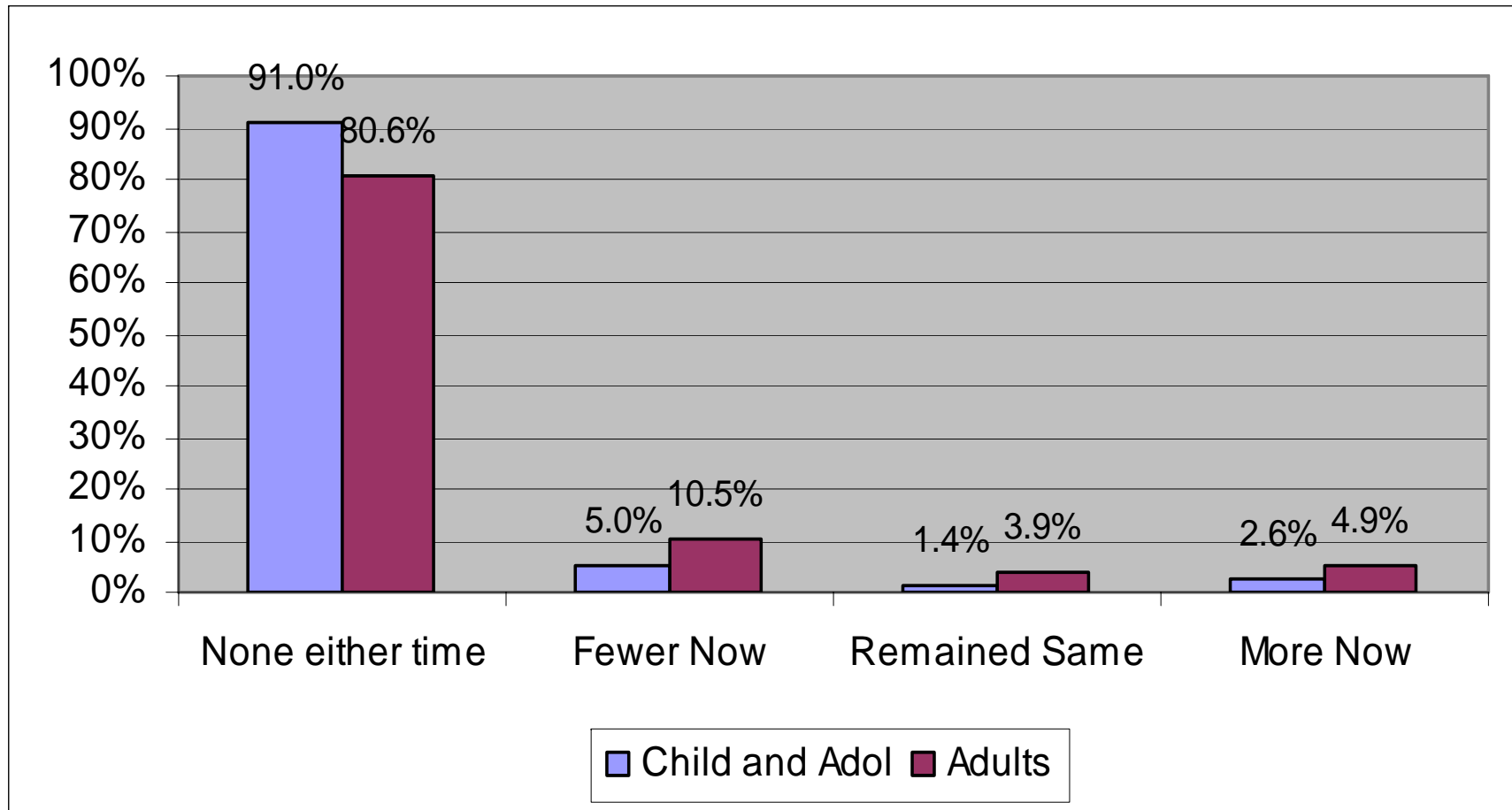
Based on Federal National Outcome Measure Calculations

S=Satisfied N=Neutral U=Unsatisfied

Changes in Employment Status: Adults Initial vs. most recent OMS

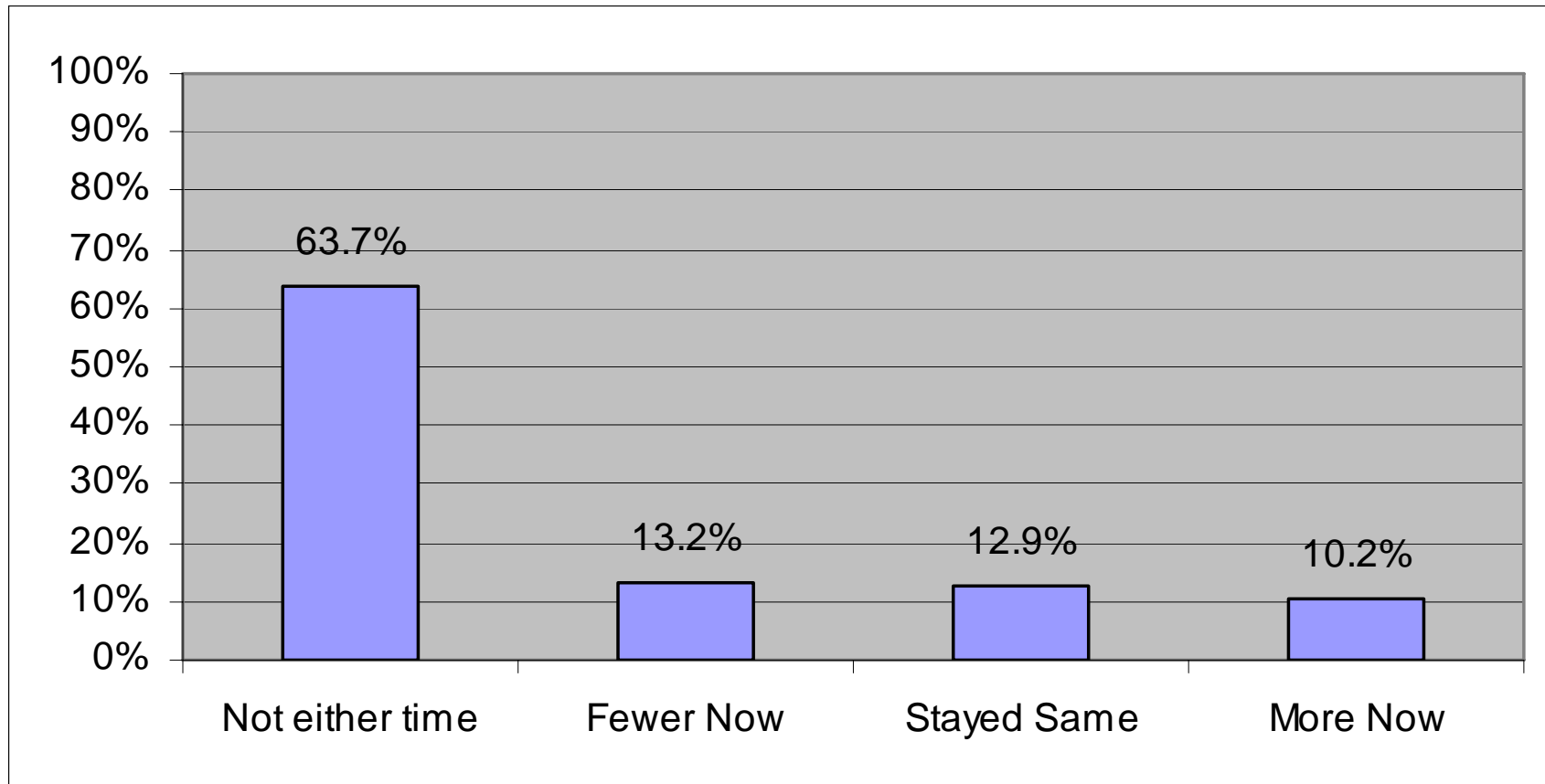


Changes in number of arrests Initial vs. most recent OMS



Based on self-reports of arrests

Changes in school suspension Initial vs. most recent OMS



Lessons Learned

Lessons Learned

- Multiple decision points
 - How to pick comparison points
 - How to compare transition cases
 - Child to Adult
 - Change of provider
- Branching complicates data both collection and analysis
- Time of year affects certain questions
 - Days of school missed in last month

Data Promulgation and Publication

- Included in budget hearing presentations
- Interactive web base analysis tools planned
 - Point in time data
 - Comparisons of most recent responses with intake/initial and next most recent responses
- Presentation to Joint Planning Council
- Data Training Seminar

Future Applications and Explorations

- Integrate analyses with service utilization, expenditures, pharmacy data sets
- Examine correlations among outcomes
- Examine effects of case mix, length of service on outcomes, satisfaction
- Investigate CQI implications of data at system and provider level
- Integrate into future service grant applications