

Oklahoma Department of Mental Health and Substance Abuse Services Oklahoma State Data Infrastructure Grant Project Use of Effective Methods to Present Data to Stakeholders

Overview:

As important as accurate data collection is for agency monitoring and management, transformation of the data into meaningful performance indicators that can be clearly communicated is critical for guiding system improvement.

Over the years, Oklahoma's performance measurement system has evolved to tailor the information to meet the needs of various audiences with differing decision-making requirements.

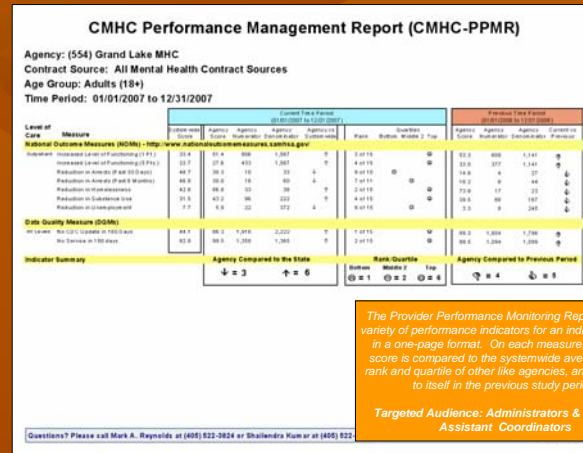
Beyond producing reports, staff members work directly with audiences to educate them about the uses of performance measures. These exchanges include discussions at Mental Health Planning Council meetings; Performance Improvement (PI) Coordinators' meetings; CMHC Directors' meetings; Governing Board PI meetings; conferences; and agency site visits, working directly with line staff.

Audiences:

Planning Councils
Administrators
Facility Directors
Direct Line Staff

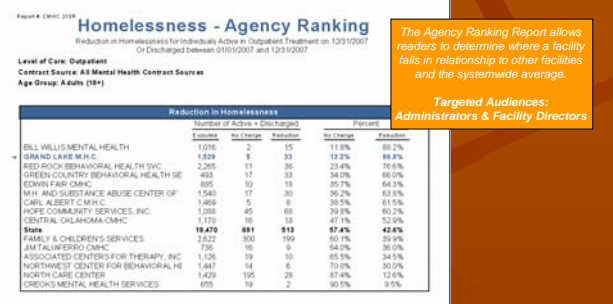
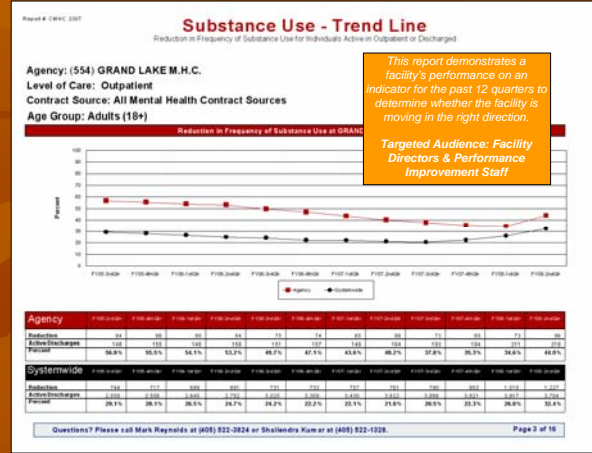
Impact:

Planning
Identification of Technical Assistance
Performance Improvement Efforts
Legislative Requests



The Provider Performance Monitoring Report shows a variety of performance indicators for an individual facility in a one-page format. On each measure, a facility's score is compared to the systemwide average, to the rank and quartile of other like agencies, and compared to itself in the previous study period.

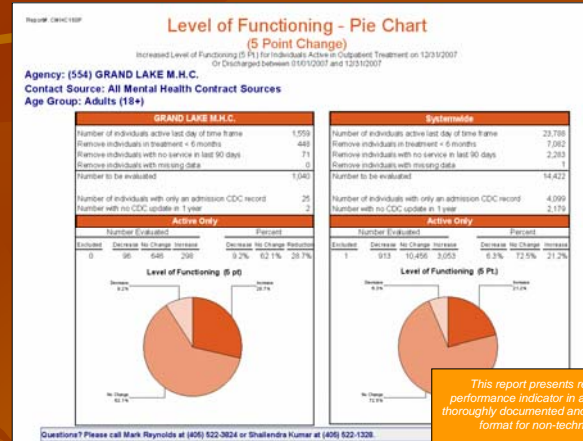
Targeted Audience: Administrators & Technical Assistant Coordinators



ODMHSAS
Creating Healthier Oklahoma Communities

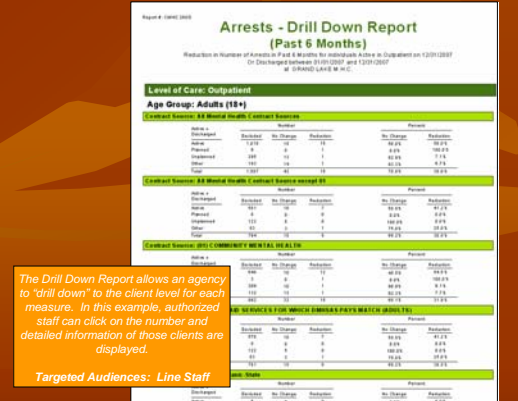
Recovery is Real in Mental Health & Substance Abuse

Reports are updated on a quarterly basis and are available through the ODMHSAS website. Some reports are restricted to protect client confidentiality.



This report presents results of each performance indicator in a commonly used, thoroughly documented and easily understood format for non-technical groups.

Targeted Audiences: Mental Health Planning Council, legislators and staff, advocacy groups



For more information, please contact Tracy Leeper (tleeper@odmhsas.org).

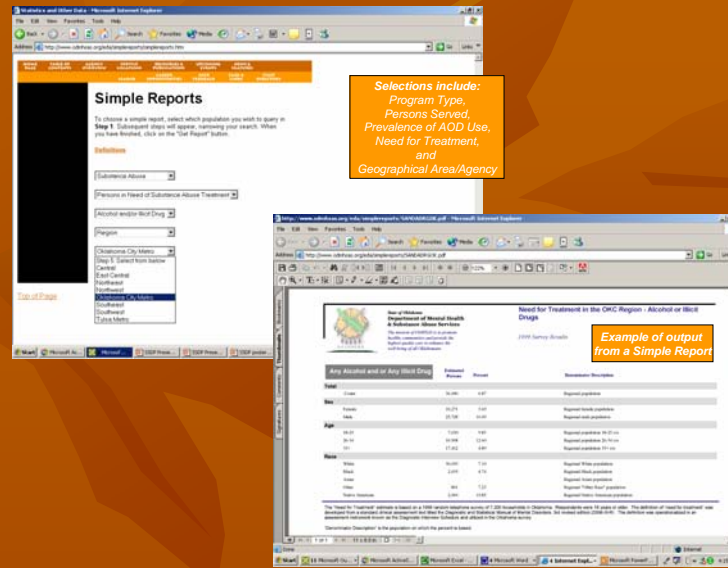
The Oklahoma Department of Mental Health and Substance Abuse Services Oklahoma State Data Infrastructure Grant Project - Data Query System

Purpose:

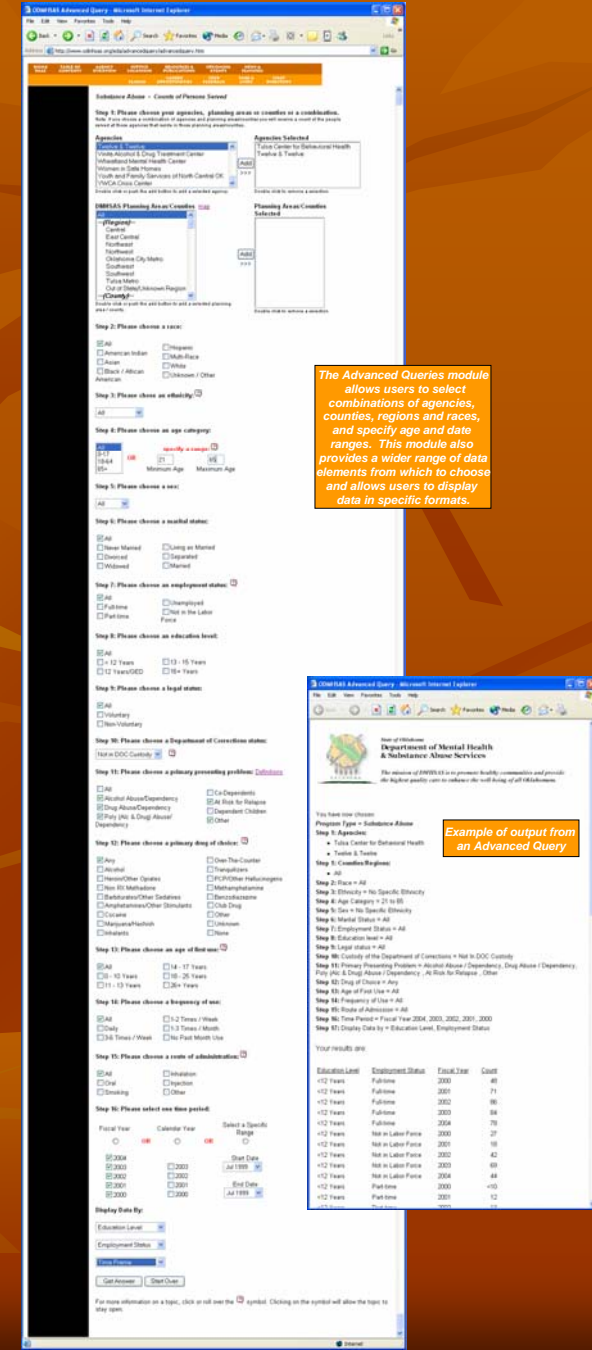
- Develop a web-based data query system
- Use existing software
- Allow public access to treatment, needs assessment and performance improvement data



Simple Reports



Advanced Queries



Developed using commonly available software:

- Microsoft SQL Server
- Java Script
- Active Server Pages (ASP)
- Microsoft FrontPage
- Crystal Reports

Designed for users with varying levels of technical knowledge

- Simple Reports
- Basic Queries
- Advanced Queries

Estimated Cost: \$25,000 staff time

Basic Queries

