

Cross Data Set

Analysis

For Treatment Outcomes

**Data
are
Everywhere**

Why?

How?

What will you find?

Why ?

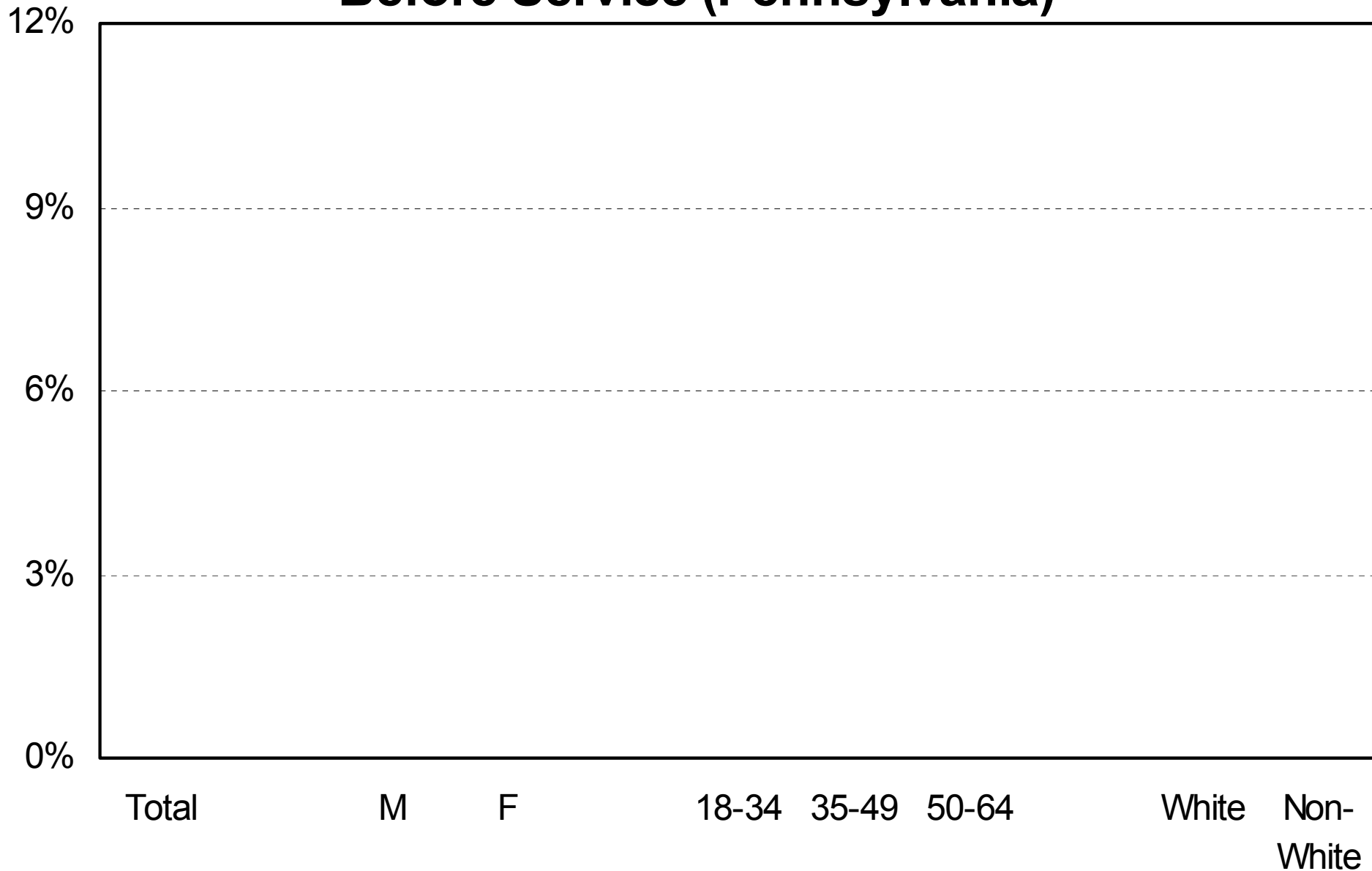
Employment

Trouble with the Law

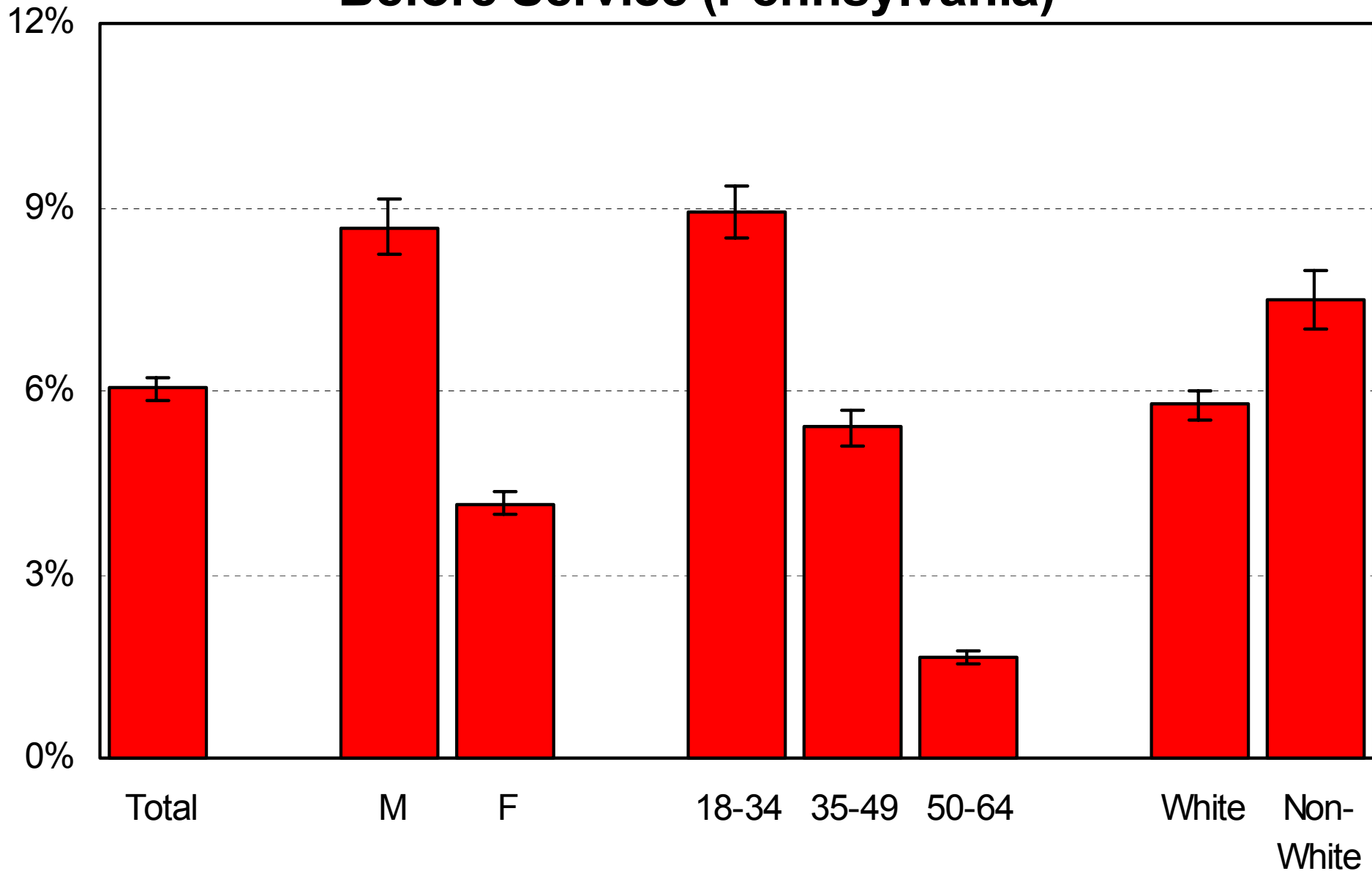
School Indicators

Mortality

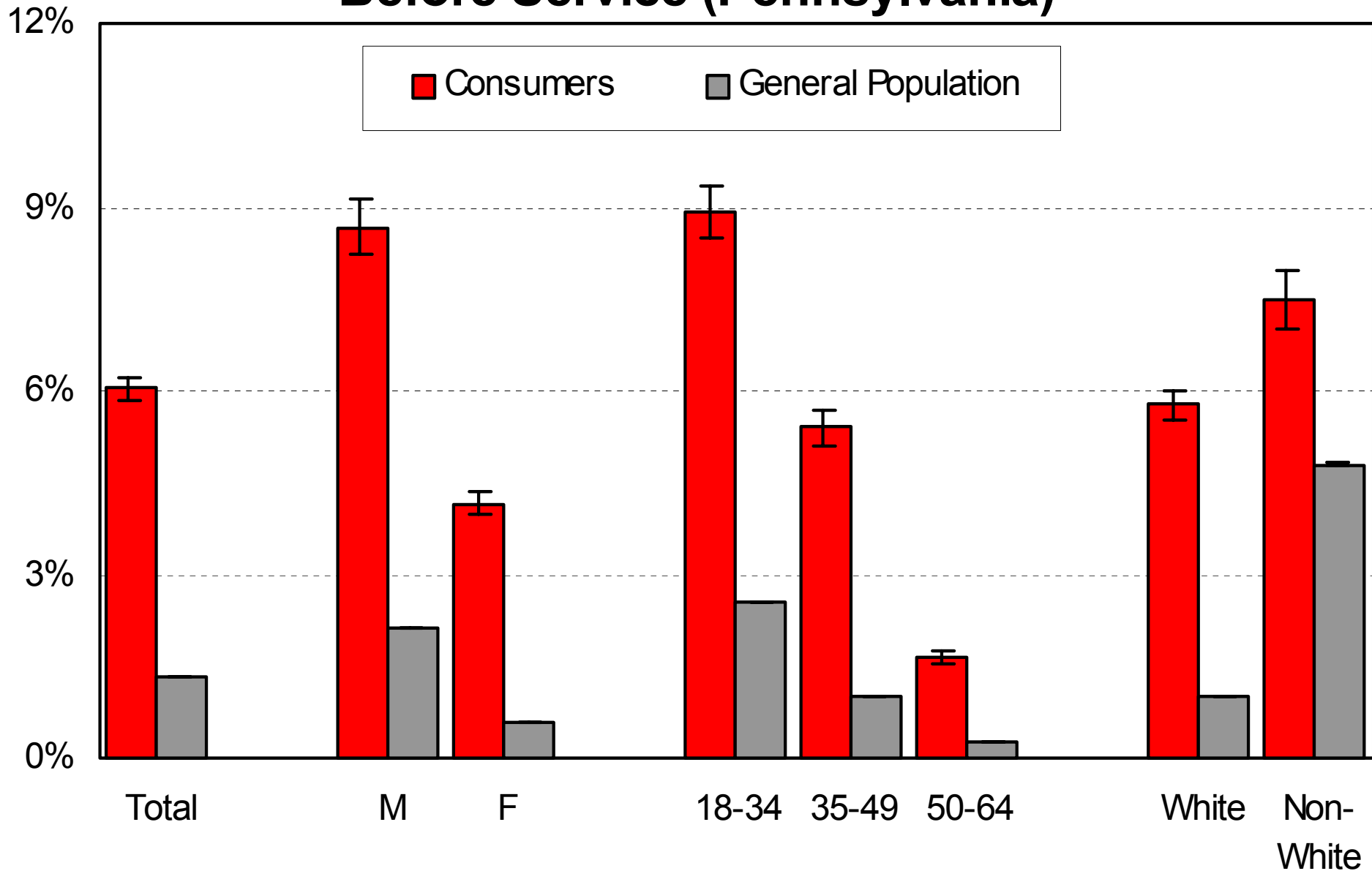
Charged with a Crime Before Service (Pennsylvania)



Charged with a Crime Before Service (Pennsylvania)

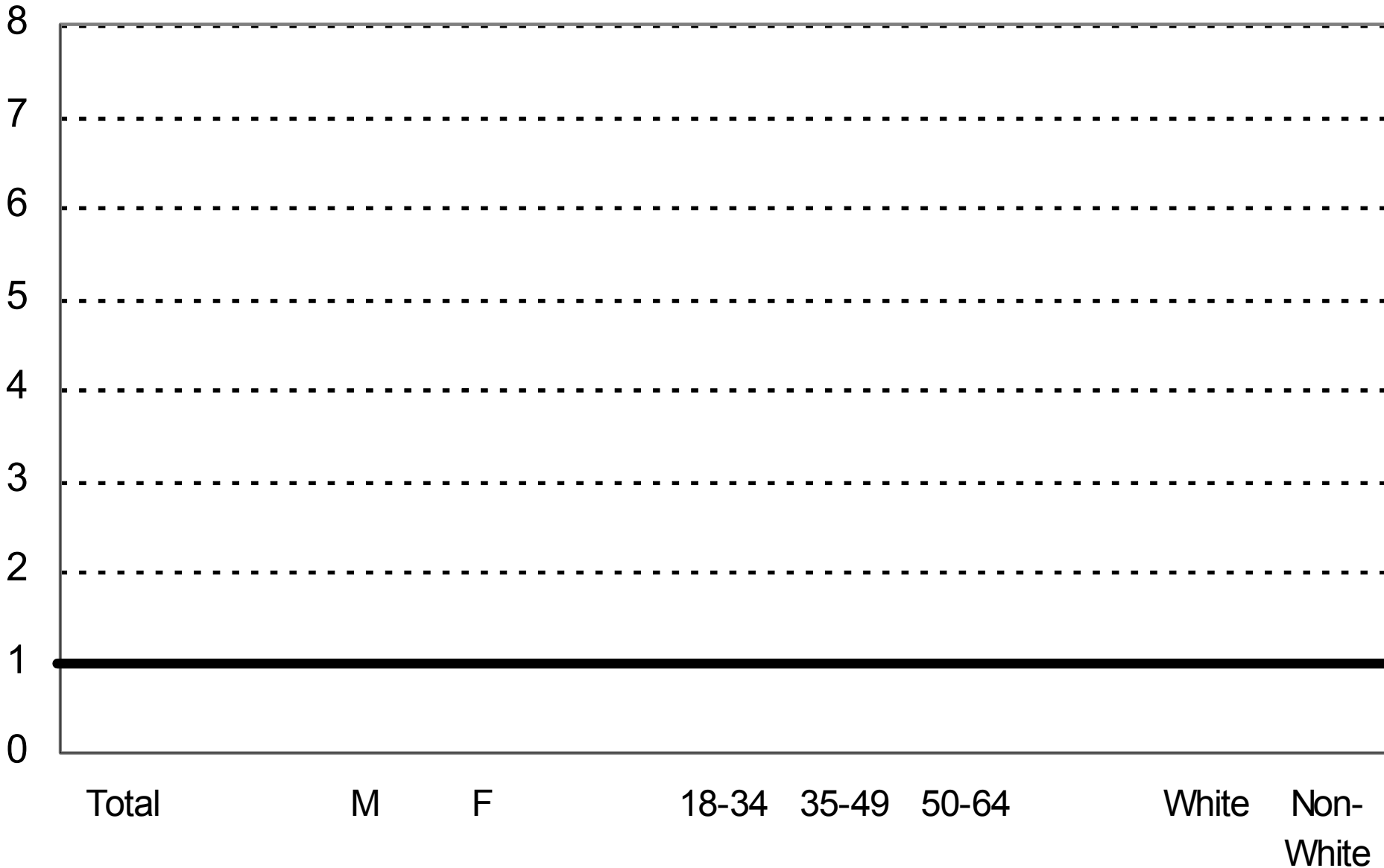


Charged with a Crime Before Service (Pennsylvania)

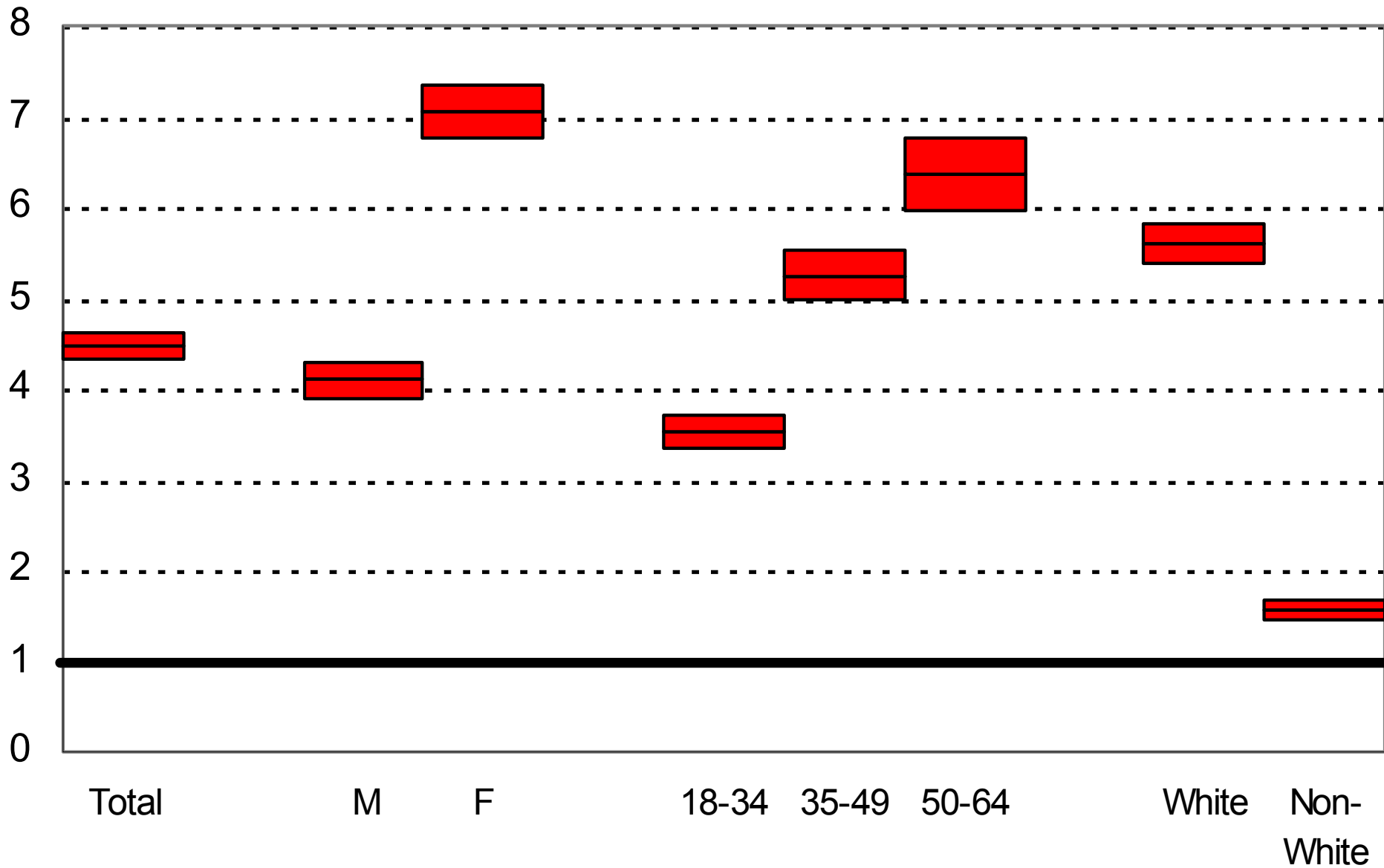


**Elevated Risk
of Being
Charged with a Crime**

Elevated Risk of Being Charged w/ a Crime Before Service



Elevated Risk of Being Charged w/ a Crime Before Service



Why ?

Less clinician burden

Less consumer burden

More valid and reliable

More cost efficient

General Pop Comparisons

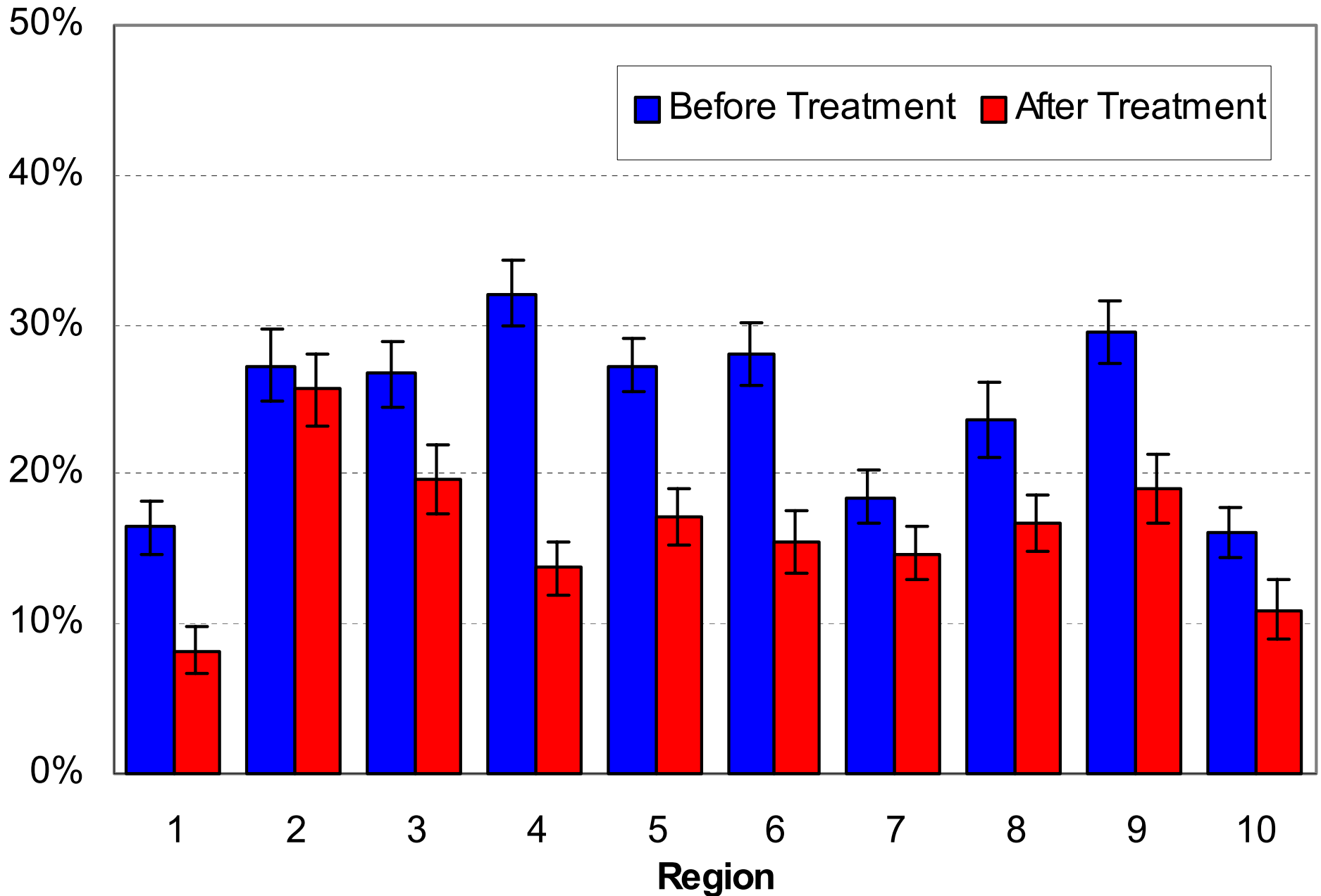
Why ?

Ongoing & Sustainable

Longitudinal

Pre and post studies

Percent Arrested



Why ?

Answer Other Questions

Hospitalization for BHC

Access to health care

Service system integration

Why ?

Answer Other Questions

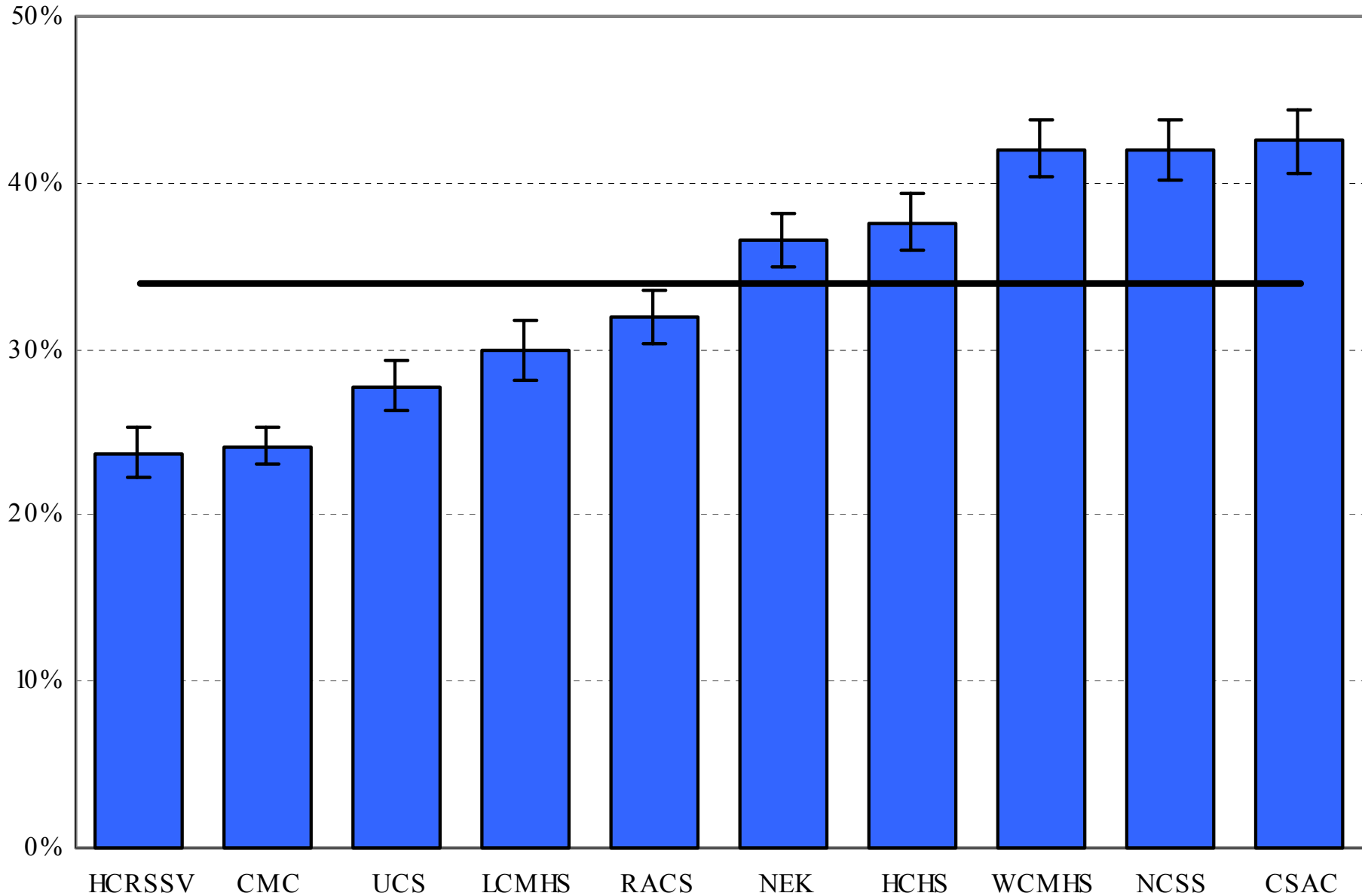
Treatment Outcomes

Hospitalization

Economic Dependency

Access to Mental Health Services

Adults Hospitalized During the Previous Year



How ?

Get the Data

Analyze the Data

Share Your Findings

Get the Data

Getting Buy-In

Interagency Agreements

Disseminating Results

Analyze the Data

Direct Record Linkage

Constructed Identifiers

Probabilistic

Population Estimation

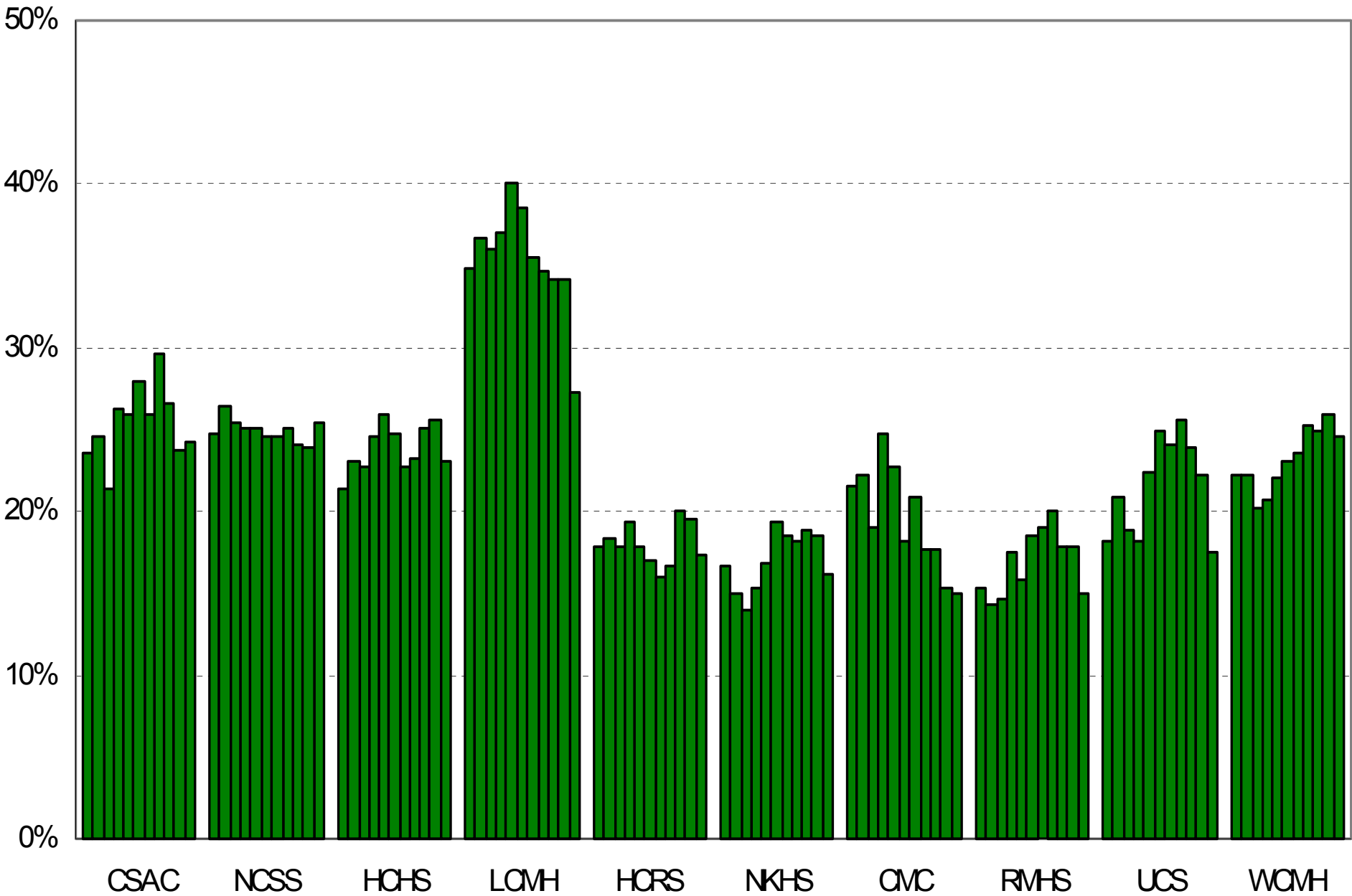
Analyze the Data

Direct Record Linkage

Gold Standard

Confidentiality Issues

Percent Employed



\$5,080,234

Oklahoma's Probabilistic Matching Process

Oklahoma's Probabilistic Matching Process

Block by Sex

Join by DOB Components

Assign Weights
to All Identifying Variables

Join by DOB Components

Month and Year

Day and Year

Month and Day

Assign Weights to All Identifying Variables

Perfect Match = 49 pts.

SSN (all digits) = 22.55 or -2.38 pts.

SSN (8 digits) = 14.51 pts.

SSN (7 digits) = 6.07 pts.

Last or Maiden Name = 9.58 or -3.62 pts.

First Name = 6.69 or -3.27 pts.

Middle Initial = 3.65 pts.

Date of Birth = 6.22 pts.

Positive & Negative Weights

Jaro, Matthew. Statistics in Medicine, Vol. 14, 491-498 (1995).

Determine Threshold of Likelihood

Gray Area - Manual Inspection

Matching Algorithm Changes Depending on Available Variables

How ?

Probabilistic

Population Estimation

Not for clinical applications

Tells "how many?"

Not "who?"

Data Elements

Required:

Date of Birth & Gender

Recommended:

Race/Ethnic & Geographical

Probabilistic Population Estimates

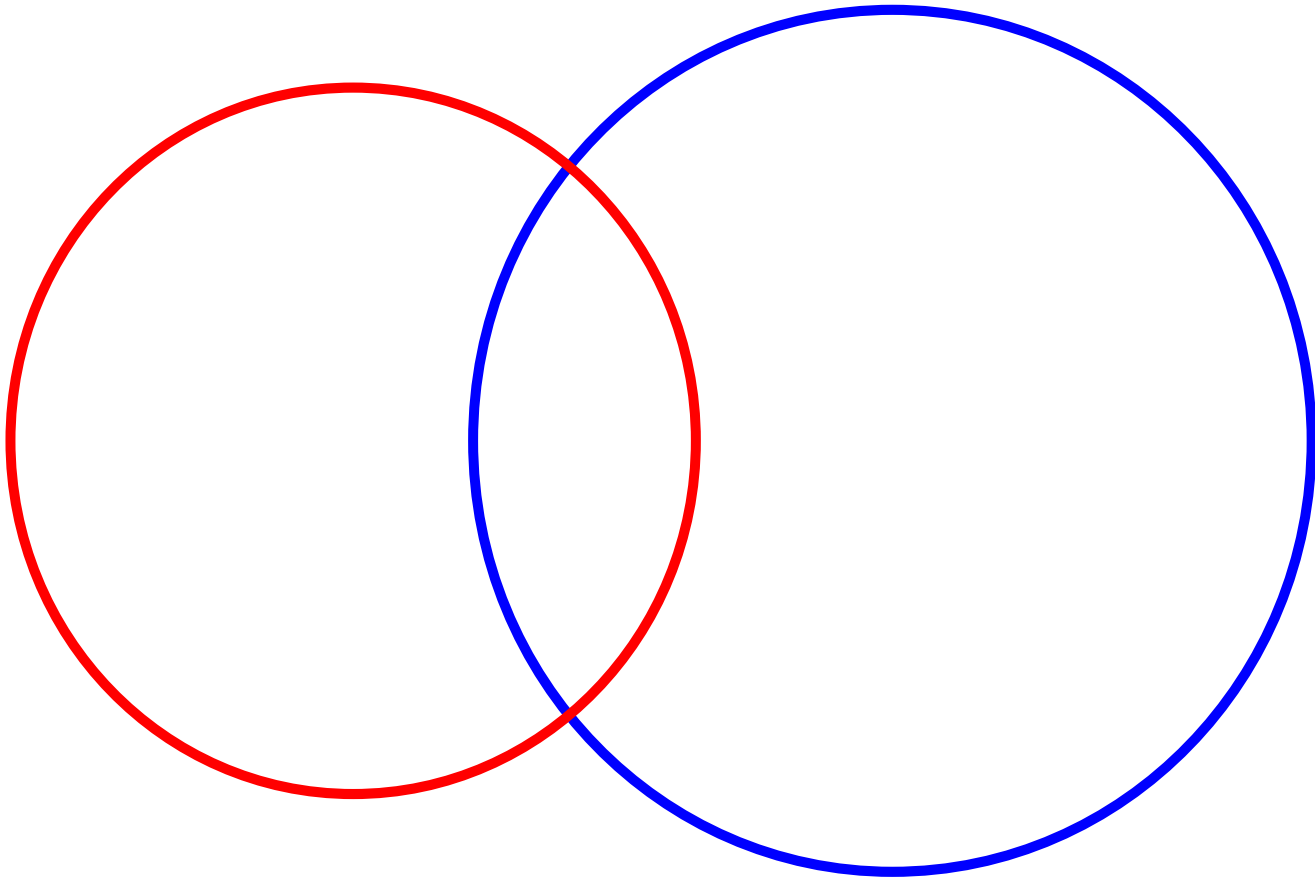
for Specified Numbers of Birth Dates Within a Given Year

Birth Dates

Number of People

1	1.003	±	.103
10	10.15	±	.776
100	117	±	9
200	290	±	22
300	632	±	64
350	1177	±	171
360	1603	±	325

Caseload Overlap



Question:

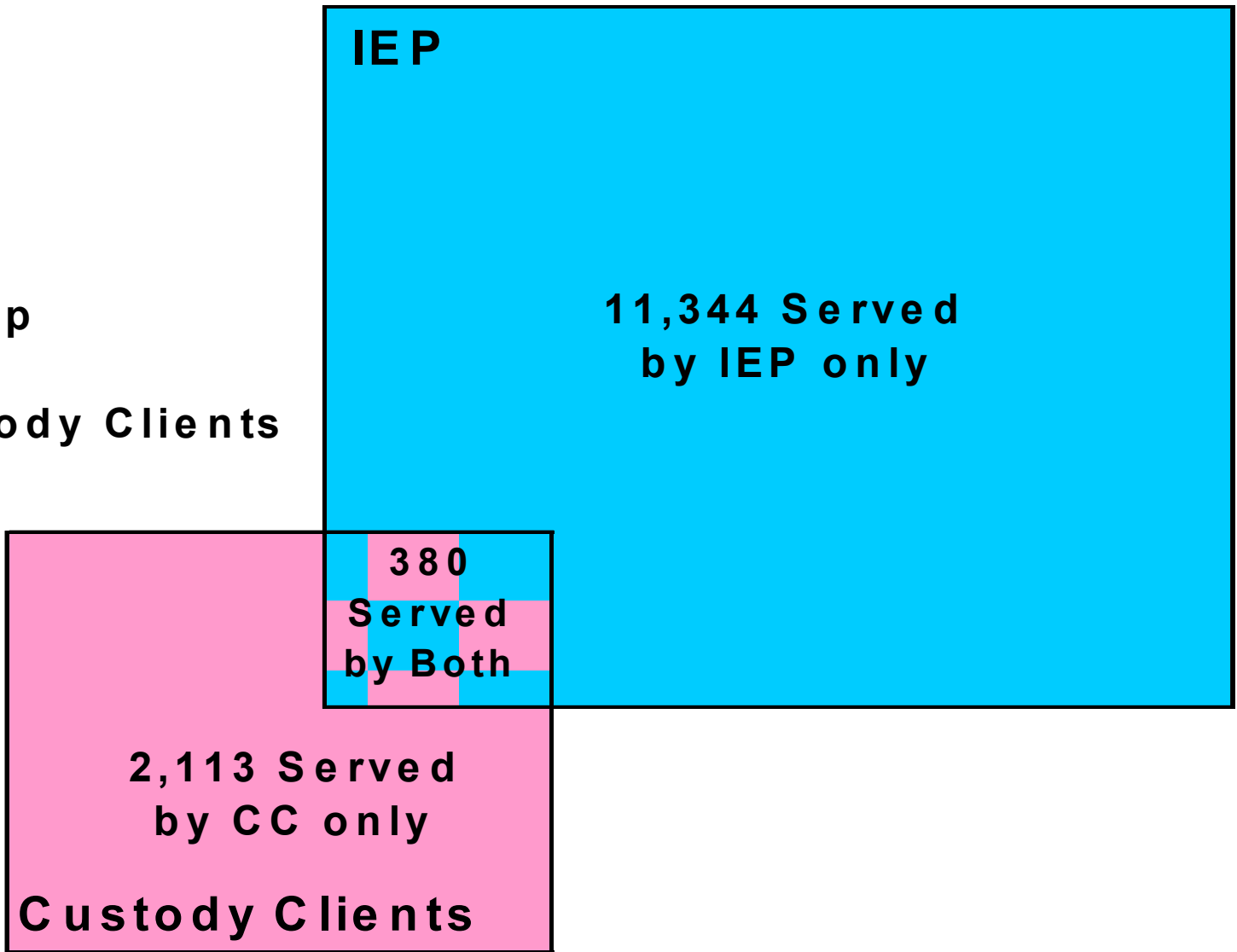
How many kids in SRS custody
are on an IEP in school?

IEP

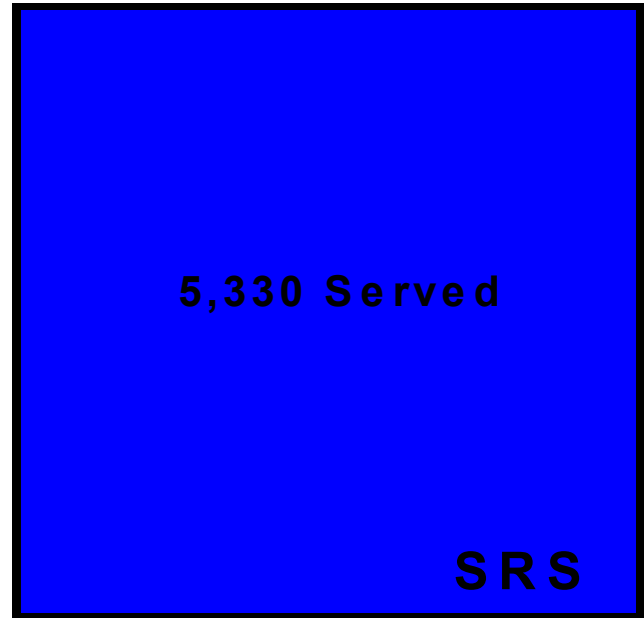
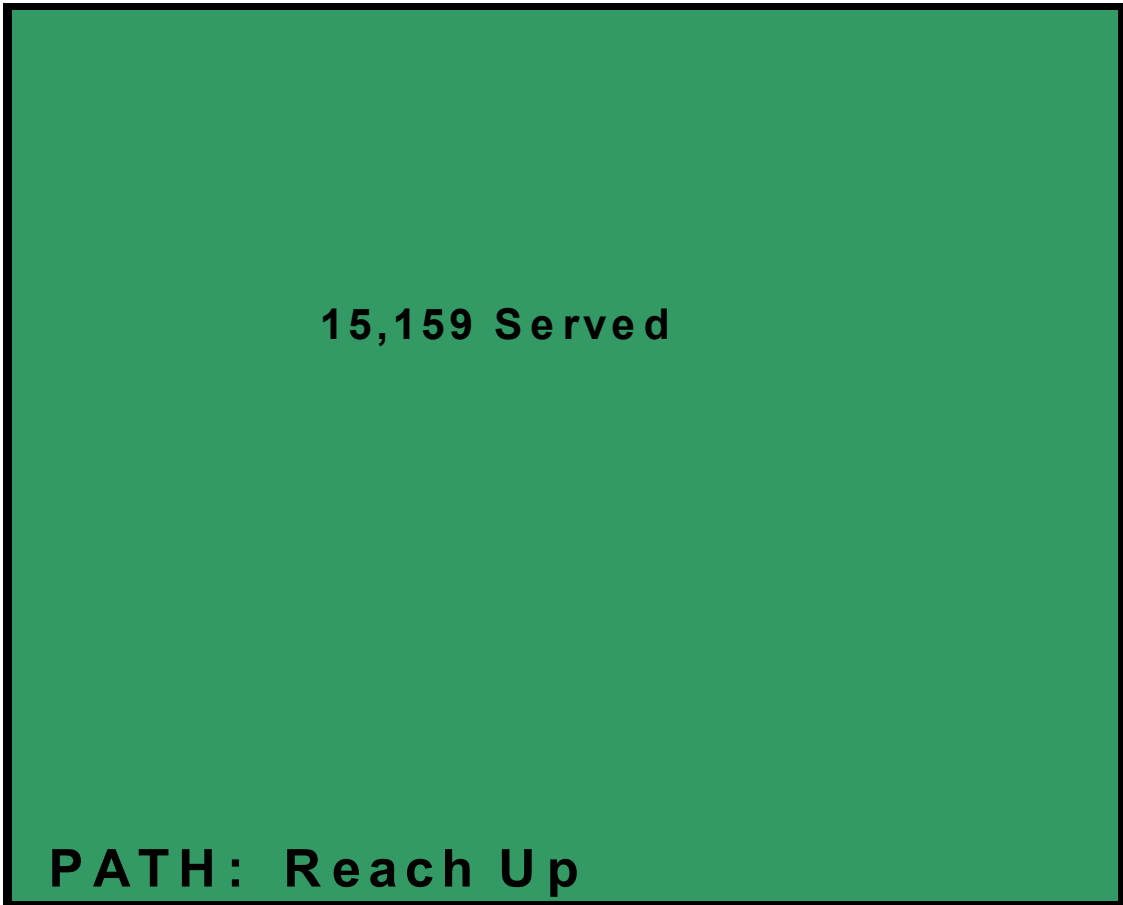
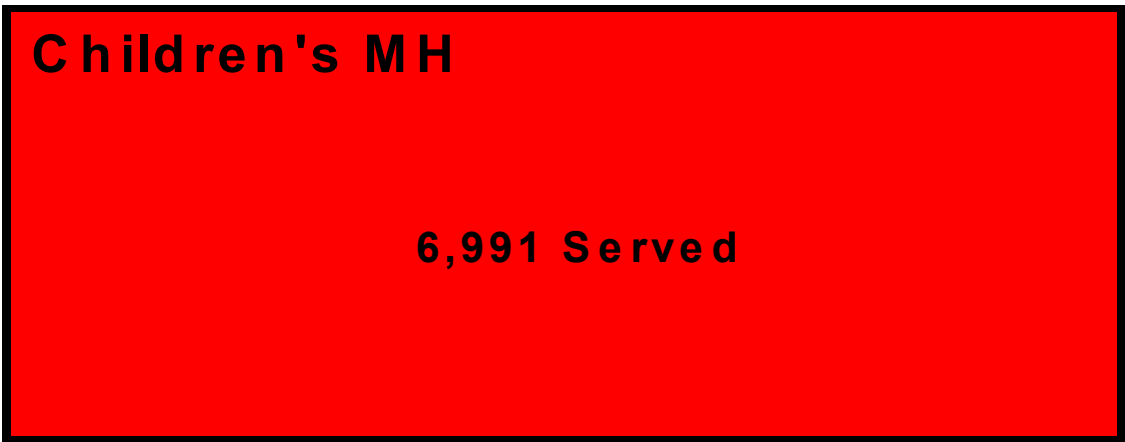
11,724 Served

2,493 Served

Custody Clients



Overlap
3% of IEP
15% of Custody Clients



Children's MH
4,139
MH Only

1,251
MH & RU Only

506
Served
by All 3

1,103
MH & SRS Only

12,641
Reach Up Only

PATH: Reach Up

770
SRS
&
RU
Only

2,960
SRS Only

SRS

SAVE

THE DATA