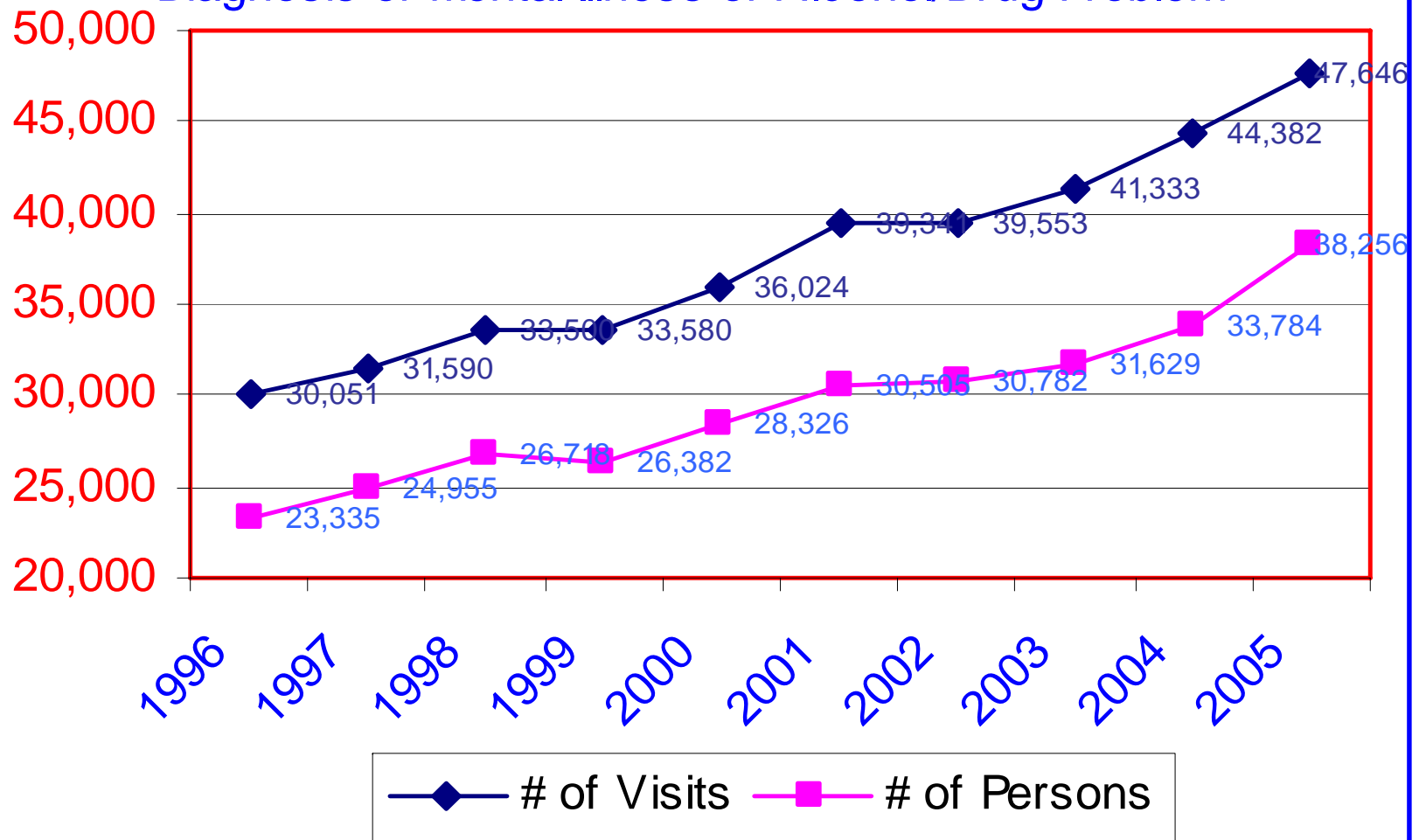


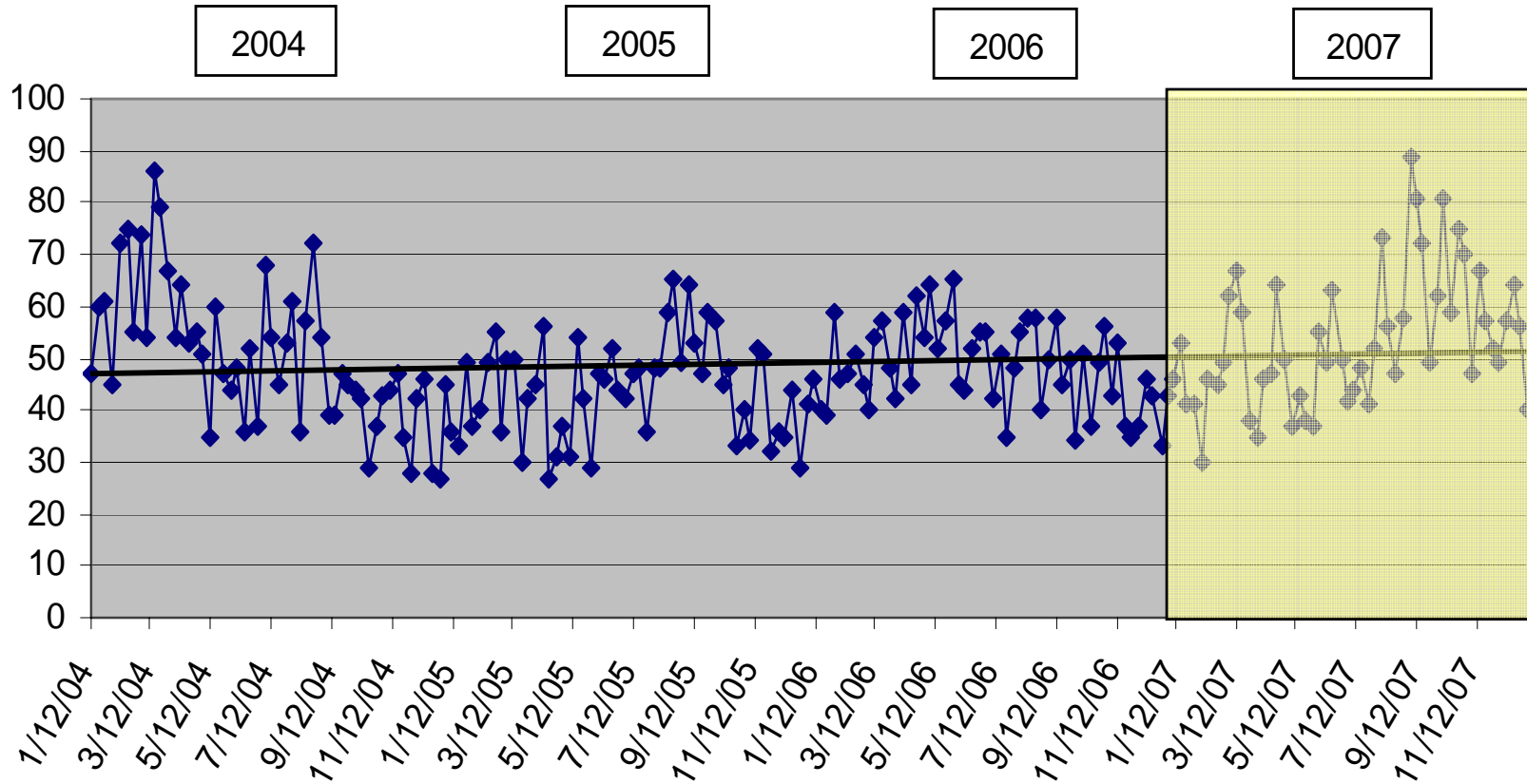
Problem: Growth in emergency room use by clients with mental illness, substance abuse

- In 5 years, the number of patients in local hospital emergency departments (EDs) with behavioral health problems increased by 45%
- Each day approximately 50 ED clients are waiting for a SC DMH bed
- ED physicians have limited access to expert behavioral health consultation

Visits to SC Emergency Departments with a Primary Diagnosis of Mental Illness or Alcohol/Drug Problem



**TOTAL NUMBER OF HOSPITAL BASED PATIENTS AWAITING
MENTAL HEALTH OR SUBSTANCE ABUSE SERVICES
JANUARY 2004 THROUGH DECEMBER 2007**



SOUTH CAROLINA DEPARTMENT OF MENTAL HEALTH
DIVISION OF EVALUATION, TRAINING AND RESEARCH (ETR)

June 2007: Request made to The Duke Endowment to develop a telepsychiatry network for EDS

- High speed interactive video conference equipment for 65 hospitals
 - Equipment to link DMH psychiatrists for consultation.
 - Five psychiatrists to be on call 24/7
 - Technical support
 - Training for all staff involved
-

Contributions from Other Partners

- SC Department of Health and Human Services (State Medicaid agency)--\$1,000,000
 - SC DMH--\$110,600
 - SC Not-for-Profit Hospitals--\$1,561,000
 - SC For-Profit Hospitals--\$1,089,500
 - SC Hospital Association--\$19,320
-

November 12, 2007:

The Duke Endowment awards DMH \$3.7 million to assist in developing a telepsychiatry network for all SC hospital emergency departments.

- Year 1: \$2,239,075
 - Year 2: \$1,500,000
-

Outcome:

Reduce Length of Stay

By 30% (609 persons) by the end of Year 2

By 50% (1,015) by end of Year 3.

Outcome:

Reduce Waiting Time in EDs for psychiatric consultation

By 30% (16.5 hours) at end of Year 2.

Average wait time in the ED is currently 55 hours.

By an additional 20% (total of 50% or 1,015 patient) by end of Year 3

Conclusion:

SC DMH and the SC Hospital Association tracked data from local hospital emergency rooms and then developed an innovative solution based on that data.