



National Public Rates - Age Stratification Report

Behavioral Healthcare Performance Measurement System

Restraint Hours

©Copyright NASMHPD Research Institute, 1999-2009.

Citation: NRI Performance Measurement System. National Public Rates, Age Stratification Report: Restraint Hours. Alexandria, VA: National Association of State Mental Health Program Directors Research Institute, Inc. August 2009

Mental health service providers are consumer-focused and value an individual's autonomy and independence. Therefore, these providers seek to minimize use of service modalities that are physically restrictive. While restrictive methods are utilized in some instances, utilization of such methods must be minimized and closely monitored. Over-utilization of highly restrictive methods suggests either the lack of availability or knowledge of more appropriate, less restrictive practices.

These restraint measures include all mechanical holds (both ambulatory and non-ambulatory) and manual holds that are over 5 minutes duration. Restraint hours are measured in terms of 1000 inpatient hours. Inpatient hours are calculated as the number of days each individual was included in the inpatient census multiplied by 24. A 30-bed facility with full census for a month totals 21,600 inpatient hours. A rate of 1.6 means that there were 34.5 hours of restraint during the month in this facility.

In general, a preferred direction for improvement is embedded in any performance measure. However, an apparent trend in the rates at the national level could be partially attributed to a change in the number of facilities, the rates of facilities participating in this measure, or both. Without established overall target levels as a guide, the interpretation of rates must take into consideration the context within which facilities operate.

<u>Reporting Period</u>	<u>Overall Rate</u>	<u>Age 12 years and under</u>	<u>Age 13-17 years</u>	<u>Age 18-24 years</u>	<u>Age 25-44 years</u>	<u>Age 45-64 years</u>	<u>Age 65 years and older</u>
1/2002	1.10	1.01	1.04	3.48	1.27	0.54	0.03
2/2002	1.04	1.28	1.30	3.38	1.17	0.48	0.02
3/2002	1.22	1.10	1.55	3.68	1.40	0.55	0.26
4/2002	1.27	1.43	1.82	3.73	1.46	0.50	0.37
5/2002	1.26	1.05	1.70	3.27	1.68	0.44	0.07
6/2002	1.23	1.17	1.17	2.27	1.82	0.51	0.15
7/2002	1.03	0.84	0.84	2.28	1.41	0.51	0.05
8/2002	1.04	1.50	0.64	2.80	1.38	0.40	0.12
9/2002	1.03	1.41	0.78	2.83	1.39	0.37	0.04
10/2002	1.02	1.68	1.06	2.68	1.33	0.40	0.03
11/2002	1.02	1.18	0.62	3.06	1.32	0.40	0.05
12/2002	0.93	0.87	0.68	1.83	1.41	0.32	0.07
1/2003	0.94	0.64	0.61	2.19	1.44	0.29	0.06
2/2003	0.87	0.46	0.52	1.73	1.30	0.39	0.06
3/2003	0.86	0.40	0.48	2.08	1.22	0.38	0.03
4/2003	0.81	0.48	0.74	1.62	1.11	0.46	0.05
5/2003	0.94	0.41	0.62	1.92	1.41	0.41	0.04
6/2003	0.98	0.44	0.59	2.11	1.42	0.46	0.04
7/2003	0.93	0.40	0.59	2.82	1.17	0.43	0.05
8/2003	0.80	0.42	0.66	2.47	1.05	0.30	0.01
9/2003	1.04	0.40	0.66	2.45	1.46	0.50	0.01
10/2003	0.95	0.29	0.55	2.19	1.38	0.41	0.09
11/2003	1.08	0.45	0.53	3.06	1.53	0.40	0.05
12/2003	1.00	0.53	0.48	3.03	1.32	0.44	0.04
1/2004	0.97	0.48	0.62	2.53	1.35	0.41	0.07

Using Data, Changing Practice™



National Public Rates - Age Stratification Report

Behavioral Healthcare Performance Measurement System

Restraint Hours

©Copyright NASMHPD Research Institute, 1999-2009.

<u>Reporting Period</u>	<u>Overall Rate</u>	<u>Age 12 years and under</u>	<u>Age 13-17 years</u>	<u>Age 18-24 years</u>	<u>Age 25-44 years</u>	<u>Age 45-64 years</u>	<u>Age 65 years and older</u>
2/2004	0.93	0.68	0.61	2.54	1.33	0.35	0.01
3/2004	1.03	0.60	0.59	2.64	1.49	0.42	0.03
4/2004	1.04	0.59	0.73	2.69	1.48	0.39	0.06
5/2004	0.93	0.56	0.56	2.81	1.21	0.42	0.07
6/2004	0.89	0.56	0.61	2.51	1.19	0.39	0.01
7/2004	1.07	0.62	1.27	3.20	1.33	0.46	0.10
8/2004	0.98	0.77	1.11	2.97	1.15	0.48	0.07
9/2004	1.13	0.56	0.58	4.09	1.35	0.49	0.04
10/2004	0.86	0.48	0.51	2.52	1.20	0.33	0.03
11/2004	0.83	0.56	0.49	2.59	1.17	0.26	0.03
12/2004	0.82	0.59	0.45	2.64	1.11	0.29	0.01
1/2005	0.76	0.57	0.48	2.32	1.01	0.32	0.03
2/2005	0.72	0.58	0.63	1.80	1.05	0.27	0.02
3/2005	0.84	0.48	0.56	1.94	1.25	0.37	0.03
4/2005	0.79	0.63	0.65	2.41	1.08	0.25	0.19
5/2005	0.66	0.46	0.47	1.49	0.95	0.31	0.07
6/2005	0.70	0.36	0.65	1.22	1.02	0.37	0.07
7/2005	0.71	0.47	0.66	1.62	1.01	0.34	0.05
8/2005	0.73	0.39	0.56	1.84	1.15	0.20	0.02
9/2005	0.70	0.49	0.61	2.04	1.08	0.16	0.02
10/2005	0.69	0.52	0.50	1.88	1.04	0.21	0.03
11/2005	0.69	0.64	0.51	2.08	0.97	0.25	0.03
12/2005	0.69	0.41	0.51	1.81	1.07	0.23	0.03
1/2006	0.76	0.34	0.58	2.02	1.20	0.21	0.01
2/2006	0.71	0.61	0.45	1.65	1.18	0.21	0.01
3/2006	0.74	0.45	0.55	2.55	1.00	0.27	0.02
4/2006	0.67	0.48	0.53	2.24	0.93	0.23	0.03
5/2006	0.74	0.54	0.55	2.41	1.05	0.22	0.01
6/2006	0.72	0.43	0.64	2.24	1.04	0.21	0.16
7/2006	0.73	0.40	0.61	2.17	1.01	0.29	0.13
8/2006	0.73	0.39	0.77	2.42	0.98	0.26	0.03
9/2006	0.62	0.80	0.58	2.16	0.85	0.17	0.02
10/2006	0.50	0.48	0.58	1.58	0.64	0.21	0.01
11/2006	0.64	0.54	0.85	1.83	0.88	0.26	0.03
12/2006	0.58	0.65	0.46	1.63	0.94	0.12	0.05
1/2007	0.74	0.56	0.61	2.30	1.06	0.22	0.14
2/2007	0.74	0.75	0.55	2.28	1.04	0.26	0.09
3/2007	0.75	0.47	0.97	1.79	1.02	0.38	0.02
4/2007	0.77	0.83	0.61	2.04	1.15	0.23	0.24
5/2007	0.70	0.65	0.48	1.83	1.09	0.21	0.14
6/2007	0.65	0.61	0.44	2.22	0.90	0.19	0.11
7/2007	0.75	0.48	0.51	2.61	1.04	0.22	0.04
8/2007	0.70	0.61	0.43	1.80	0.97	0.35	0.07
9/2007	0.75	0.69	0.50	2.93	0.87	0.34	0.03
10/2007	0.65	0.59	0.46	1.93	0.89	0.25	0.26
11/2007	0.70	0.50	0.54	2.13	0.97	0.30	0.04
12/2007	0.68	0.61	0.48	1.50	1.11	0.24	0.02
1/2008	0.61	0.64	0.43	1.71	0.95	0.19	0.03
2/2008	0.65	0.62	0.47	1.69	0.91	0.31	0.05

Using Data, Changing Practice™

National Association of State Mental Health Program Directors Research Institute, Inc (NRI)

BHPMS Office: 209 Madison Street, Suite 401, Alexandria, VA 22314 - Phone (703) 682-9476 - Fax (703) 739-8956 - www.nri-inc.org



National Public Rates - Age Stratification Report

Behavioral Healthcare Performance Measurement System

Restraint Hours

©Copyright NASMHPD Research Institute, 1999-2009.

<u>Reporting Period</u>	<u>Overall Rate</u>	<u>Age 12 years and under</u>	<u>Age 13-17 years</u>	<u>Age 18-24 years</u>	<u>Age 25-44 years</u>	<u>Age 45-64 years</u>	<u>Age 65 years and older</u>
3/2008	0.72	0.65	0.50	1.37	1.22	0.26	0.04
4/2008	0.56	0.87	0.57	1.29	0.80	0.27	0.04
5/2008	0.73	0.54	0.54	1.65	1.19	0.26	0.03
6/2008	0.76	0.80	0.75	1.70	1.26	0.24	0.10
7/2008	0.82	0.79	1.26	1.46	1.35	0.29	0.21
8/2008	0.63	0.53	0.38	1.43	1.09	0.20	0.04
9/2008	0.63	0.57	0.34	1.59	0.98	0.24	0.06
10/2008	0.56	0.65	0.58	1.50	0.79	0.21	0.19
11/2008	0.59	0.71	0.52	1.94	0.86	0.17	0.02
12/2008	0.59	0.73	0.44	1.44	0.97	0.18	0.05
1/2009	0.60	0.74	0.37	1.92	0.93	0.17	0.02
2/2009	0.63	0.80	0.55	1.77	0.97	0.21	0.03
3/2009	0.71	1.03	0.47	1.89	1.10	0.25	0.02



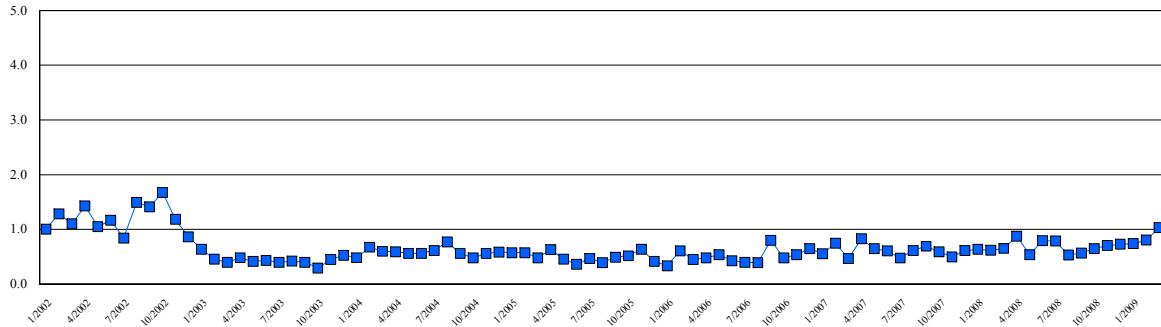
National Public Rates - Age Stratification Report

Behavioral Healthcare Performance Measurement System

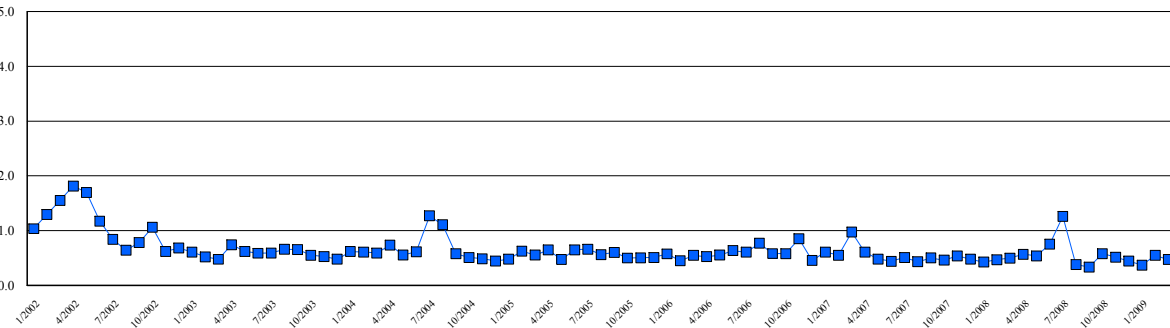
Restraint Hours

©Copyright NASMHPD Research Institute, 1999-2009.

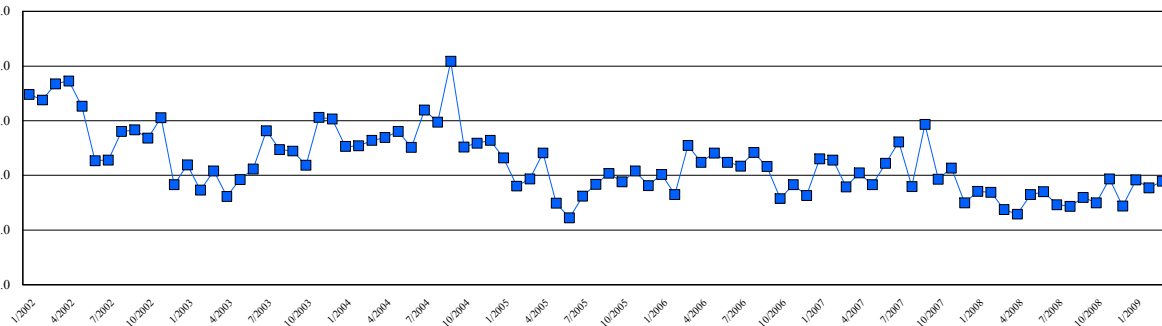
Clients age 12 years and under



Clients age 13-17 years



Clients age 18-24 years





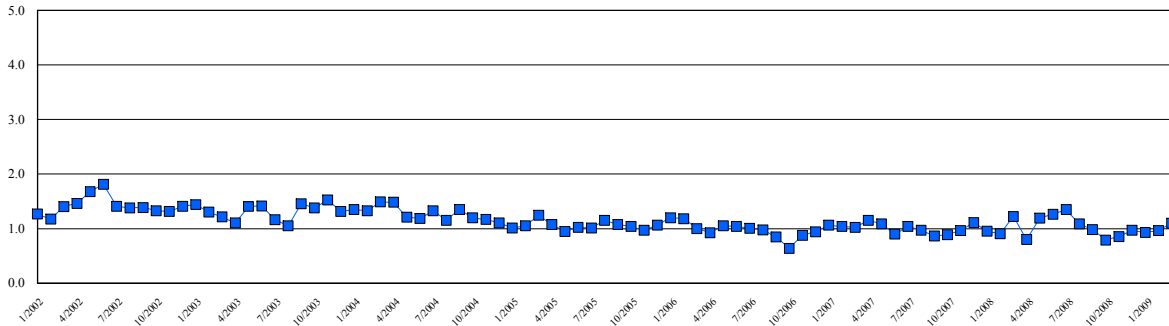
National Public Rates - Age Stratification Report

Behavioral Healthcare Performance Measurement System

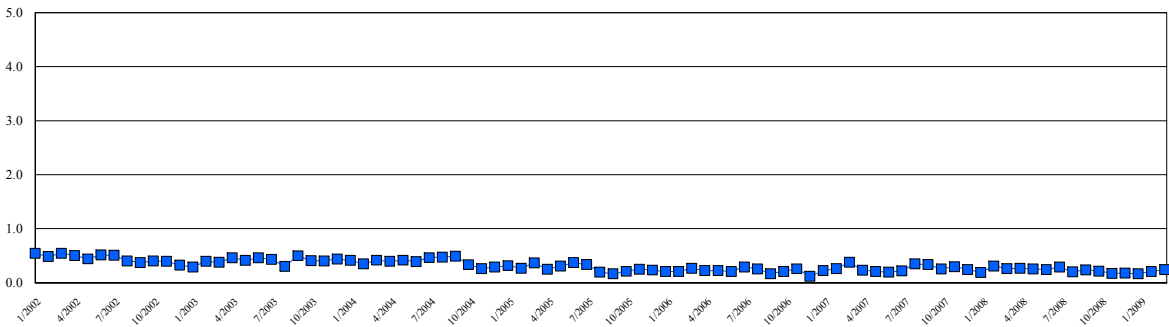
Restraint Hours

©Copyright NASMHPD Research Institute, 1999-2009.

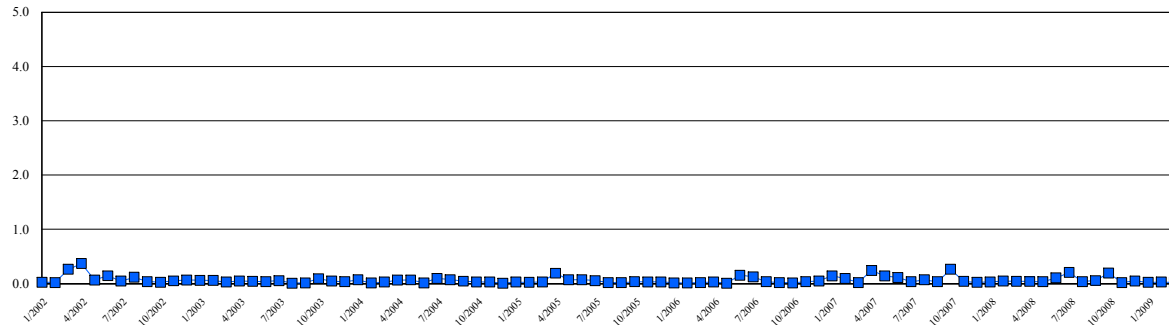
Clients age 25-44 years



Clients age 45-64 years



Clients age 65 years and older



Public rate reports are produced after data for a measure are finalized. The reports will include from three to six months lag. These reports are refreshed quarterly and three months of data are added at that time. Labels on the chart are provided at three month intervals, each square represents the rate for a month.



National Public Rates - Age Stratification Report

Behavioral Healthcare Performance Measurement System

Percent of Clients Restrained

©Copyright NASMHPD Research Institute, 1999-2009.

Citation: NRI Performance Measurement System. National Public Rates, Age Stratification Report: Percent of Clients Restrained. Alexandria, VA: National Association of State Mental Health Program Directors Research Institute, Inc. August 2009

Mental health service providers are consumer-focused and value an individual's autonomy and independence. Therefore, these providers seek to minimize use of service modalities that are physically restrictive. While restrictive methods are utilized in some instances, utilization of such methods must be minimized and closely monitored. Over-utilization of highly restrictive methods suggests either the lack of availability or knowledge of more appropriate, less restrictive practices.

These restraint measures include all mechanical holds (both ambulatory and non-ambulatory) and manual holds that are over 5 minutes duration. Percent of clients restrained is measured in terms of unique individuals who were restrained at least once during the reporting period.

In general, a preferred direction for improvement is embedded in any performance measure. However, an apparent trend in the rates at the national level could be partially attributed to a change in the number of facilities, the rates of facilities participating in this measure, or both. Without established overall target levels as a guide, the interpretation of rates must take into consideration the context within which facilities operate.

<u>Reporting Period</u>	<u>Overall Rate</u>	<u>Age 12 years and under</u>	<u>Age 13-17 years</u>	<u>Age 18-24 years</u>	<u>Age 25-44 years</u>	<u>Age 45-64 years</u>	<u>Age 65 years and older</u>
1/2002	3.90	14.32	10.85	8.05	3.62	1.73	0.59
2/2002	3.49	11.88	9.84	7.75	3.18	1.44	0.58
3/2002	3.82	14.04	10.31	8.03	3.54	1.52	0.80
4/2002	3.73	13.58	10.79	7.22	3.43	1.55	0.70
5/2002	3.88	13.79	10.31	7.61	3.76	1.53	0.35
6/2002	3.73	12.04	10.57	7.35	3.70	1.54	0.62
7/2002	3.77	14.99	9.97	7.34	3.70	1.75	0.59
8/2002	3.71	12.48	8.89	7.63	3.67	1.82	0.50
9/2002	3.65	10.32	10.63	8.08	3.45	1.51	0.51
10/2002	3.59	11.30	9.84	7.08	3.44	1.56	0.47
11/2002	3.55	12.65	9.61	8.03	3.17	1.52	0.67
12/2002	3.63	12.34	10.14	7.71	3.61	1.31	0.68
1/2003	3.55	12.96	9.30	7.79	3.64	1.37	0.46
2/2003	3.35	11.23	8.18	7.33	3.39	1.44	0.47
3/2003	3.71	11.08	9.42	7.74	3.75	1.59	0.58
4/2003	3.54	11.89	9.01	7.78	3.50	1.45	0.49
5/2003	3.82	11.63	9.29	7.89	3.98	1.60	0.50
6/2003	3.62	12.96	8.28	8.17	3.71	1.58	0.29
7/2003	3.45	13.95	8.81	7.91	3.41	1.42	0.52
8/2003	3.54	12.50	10.47	7.82	3.59	1.41	0.26
9/2003	3.56	9.50	9.43	7.64	3.74	1.52	0.29
10/2003	3.54	11.62	8.42	7.51	3.68	1.52	0.49
11/2003	3.68	13.19	9.35	8.42	3.66	1.55	0.23
12/2003	3.67	11.99	8.64	7.95	3.93	1.53	0.47
1/2004	3.71	11.80	9.57	7.98	3.96	1.50	0.42

Using Data, Changing Practice™

National Association of State Mental Health Program Directors Research Institute, Inc (NRI)

BHPMS Office: 209 Madison Street, Suite 401, Alexandria, VA 22314 - Phone (703) 682-9476 - Fax (703) 739-8956 - www.nri-inc.org



National Public Rates - Age Stratification Report

Behavioral Healthcare Performance Measurement System

Percent of Clients Restrained

©Copyright NASMHPD Research Institute, 1999-2009.

<u>Reporting Period</u>	<u>Overall Rate</u>	<u>Age 12 years and under</u>	<u>Age 13-17 years</u>	<u>Age 18-24 years</u>	<u>Age 25-44 years</u>	<u>Age 45-64 years</u>	<u>Age 65 years and older</u>
2/2004	3.71	13.89	8.96	7.55	3.99	1.51	0.37
3/2004	3.96	14.65	9.88	7.77	4.11	1.65	0.68
4/2004	3.93	13.93	10.20	7.93	3.92	1.82	0.52
5/2004	3.97	17.28	10.06	8.02	3.91	1.82	0.68
6/2004	3.86	13.05	10.89	7.68	3.96	1.76	0.40
7/2004	3.98	10.98	10.50	7.67	4.15	2.05	0.68
8/2004	3.91	13.19	11.32	8.00	3.91	1.85	0.45
9/2004	3.89	13.66	9.93	7.93	3.88	1.92	0.71
10/2004	3.76	14.06	9.84	7.42	4.02	1.55	0.57
11/2004	3.73	14.87	8.81	7.77	3.89	1.63	0.58
12/2004	3.78	14.27	9.29	8.19	3.86	1.76	0.55
1/2005	3.92	16.62	10.68	8.31	3.81	1.88	0.52
2/2005	3.66	16.08	9.15	7.97	3.63	1.64	0.53
3/2005	3.87	16.30	9.69	7.62	4.00	1.71	0.55
4/2005	3.84	15.24	9.69	8.22	3.89	1.67	0.53
5/2005	3.87	16.50	10.40	7.83	3.99	1.61	0.60
6/2005	3.67	16.60	9.15	7.15	3.92	1.69	0.56
7/2005	3.80	16.62	10.59	7.53	4.00	1.75	0.57
8/2005	3.58	15.21	8.66	7.57	3.78	1.66	0.53
9/2005	3.84	17.13	10.03	7.73	4.04	1.76	0.56
10/2005	3.81	17.08	10.58	8.09	3.87	1.68	0.72
11/2005	3.76	13.13	9.99	7.61	3.92	1.86	0.77
12/2005	3.80	14.03	11.60	8.14	4.02	1.57	0.71
1/2006	3.90	13.91	11.25	8.77	3.96	1.73	0.57
2/2006	3.68	15.55	10.19	8.30	3.75	1.54	0.54
3/2006	3.87	15.56	9.54	8.08	4.07	1.72	0.73
4/2006	3.80	15.05	9.91	8.27	3.95	1.74	0.41
5/2006	4.07	17.92	11.36	8.57	4.11	1.83	0.68
6/2006	3.61	15.11	10.69	7.51	3.67	1.70	0.82
7/2006	3.91	15.55	11.20	8.10	4.20	1.78	0.80
8/2006	3.81	16.49	10.83	7.95	3.99	1.75	0.66
9/2006	3.87	16.94	11.37	8.33	3.92	1.88	0.47
10/2006	3.86	16.48	10.69	7.86	4.00	1.80	0.79
11/2006	3.89	19.05	10.79	8.44	3.98	1.71	0.76
12/2006	3.91	19.75	10.00	8.46	4.12	1.76	0.95
1/2007	4.13	20.58	11.21	8.08	4.34	1.84	1.06
2/2007	4.06	19.85	10.69	7.72	4.34	1.80	0.79
3/2007	4.12	18.07	10.68	8.26	4.14	2.01	0.72
4/2007	4.30	21.24	12.23	8.47	4.24	1.99	0.75
5/2007	4.06	19.43	10.72	7.54	4.33	1.78	0.80
6/2007	4.17	23.38	11.89	8.32	4.17	1.97	0.77
7/2007	4.02	18.97	12.31	8.15	4.05	1.96	0.73
8/2007	4.16	18.45	10.74	8.17	4.49	1.98	0.97
9/2007	4.00	16.93	11.21	8.41	4.17	1.86	0.74
10/2007	4.06	19.69	10.21	7.94	4.17	1.98	1.10
11/2007	4.03	18.17	11.86	7.91	4.19	1.86	0.83
12/2007	4.07	18.81	11.85	7.69	4.34	1.91	1.01
1/2008	3.97	17.13	11.48	7.80	4.26	1.75	0.87
2/2008	3.76	16.24	9.75	7.65	4.01	1.63	0.96

Using Data. Changing Practice™

National Association of State Mental Health Program Directors Research Institute, Inc (NRI)

BHPMS Office: 209 Madison Street, Suite 401, Alexandria, VA 22314 - Phone (703) 682-9476 - Fax (703) 739-8956 - www.nri-inc.org

Page 2 of 5



National Public Rates - Age Stratification Report

Behavioral Healthcare Performance Measurement System

Percent of Clients Restrained

©Copyright NASMHPD Research Institute, 1999-2009.

<u>Reporting Period</u>	<u>Overall Rate</u>	<u>Age 12 years and under</u>	<u>Age 13-17 years</u>	<u>Age 18-24 years</u>	<u>Age 25-44 years</u>	<u>Age 45-64 years</u>	<u>Age 65 years and older</u>
3/2008	3.97	16.71	10.37	7.98	4.28	1.77	0.84
4/2008	3.90	20.35	10.38	7.36	4.03	1.82	0.93
5/2008	3.97	18.48	9.54	8.00	4.15	1.91	0.99
6/2008	4.00	24.80	11.17	7.39	4.20	1.88	1.11
7/2008	4.04	24.66	10.91	7.94	4.21	1.91	1.05
8/2008	3.86	22.43	11.15	7.78	4.00	1.80	0.97
9/2008	3.87	24.04	10.65	7.82	3.86	1.86	1.09
10/2008	4.02	20.25	11.94	7.80	4.06	1.79	1.34
11/2008	3.95	20.06	11.78	7.69	4.19	1.78	0.70
12/2008	3.93	18.96	10.44	8.34	4.04	1.79	1.23
1/2009	4.03	21.58	11.27	7.86	4.26	1.84	1.20
2/2009	3.76	18.40	10.60	7.92	3.91	1.61	0.86
3/2009	3.94	20.27	11.27	7.27	4.12	1.78	0.99



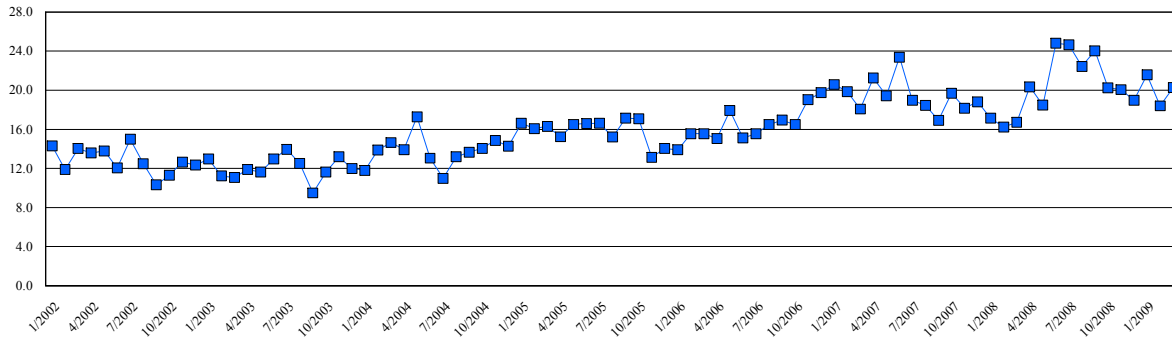
National Public Rates - Age Stratification Report

Behavioral Healthcare Performance Measurement System

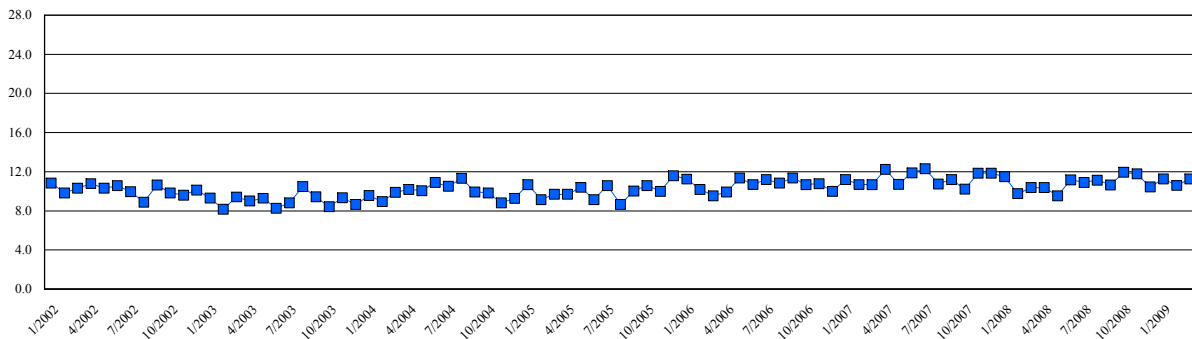
Percent of Clients Restrained

©Copyright NASMHPD Research Institute, 1999-2009.

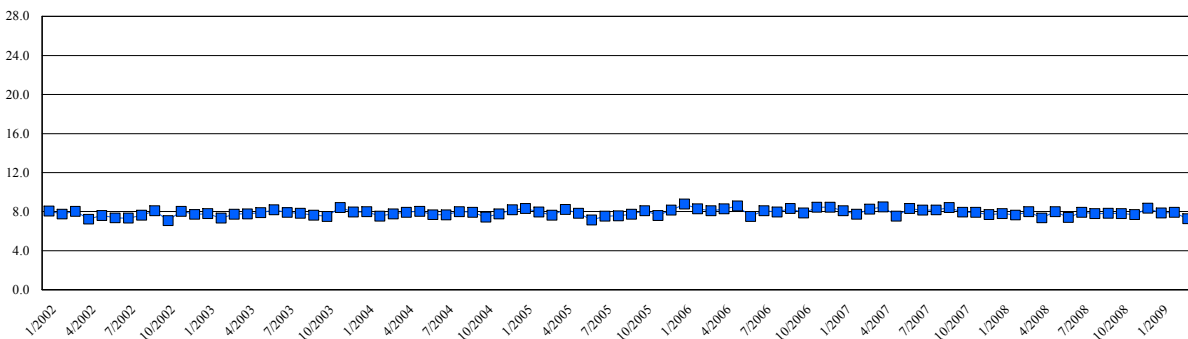
Clients age 12 years and under



Clients age 13-17 years



Clients age 18-24 years





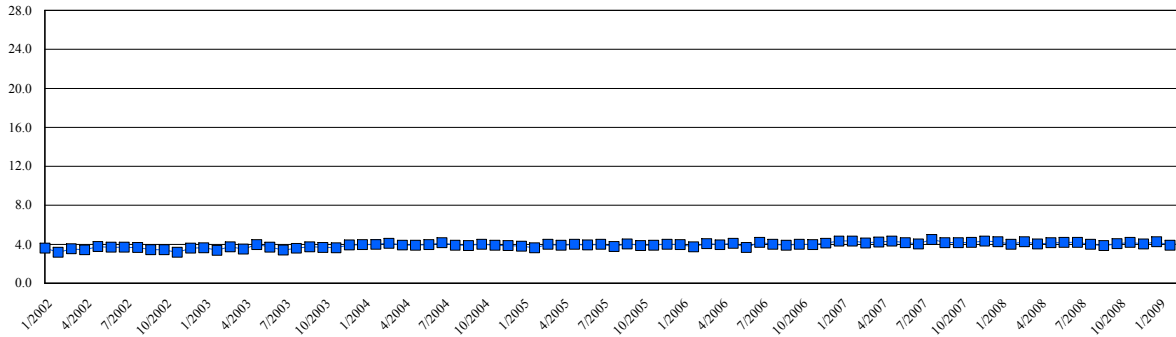
National Public Rates - Age Stratification Report

Behavioral Healthcare Performance Measurement System

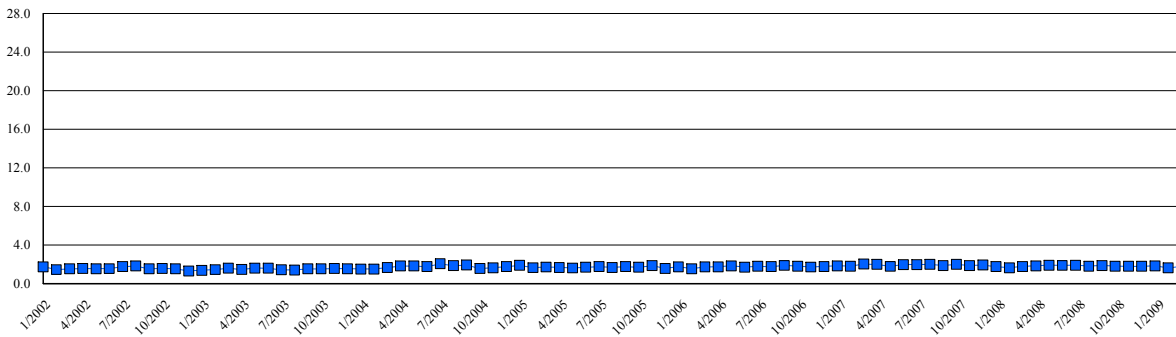
Percent of Clients Restrained

©Copyright NASMHPD Research Institute, 1999-2009.

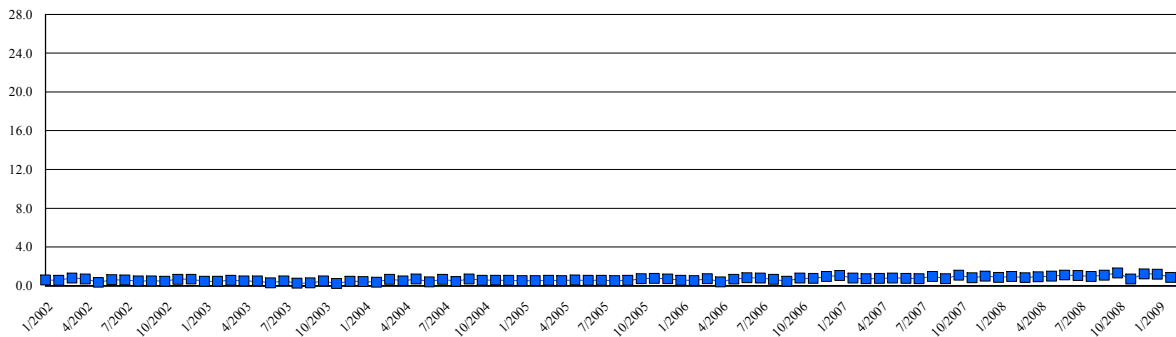
Clients age 25-44 years



Clients age 45-64 years



Clients age 65 years and older



Public rate reports are produced after data for a measure are finalized. The reports will include from three to six months lag. These reports are refreshed quarterly and three months of data are added at that time. Labels on the chart are provided at three month intervals, each square represents the rate for a month.

Using Data, Changing Practice™

National Association of State Mental Health Program Directors Research Institute, Inc (NRI)

BHPMS Office: 209 Madison Street, Suite 401, Alexandria, VA 22314 - Phone (703) 682-9476 - Fax (703) 739-8956 - www.nri-inc.org



National Public Rates - Age Stratification Report

Behavioral Healthcare Performance Measurement System

Seclusion Hours

©Copyright NASMHPD Research Institute, 1999-2009.

Citation: NRI Performance Measurement System. National Public Rates, Age Stratification Report: Seclusion Hours. Alexandria, VA: National Association of State Mental Health Program Directors Research Institute, Inc. August 2009

Mental health service providers are consumer-focused and value an individual's autonomy and independence. Therefore, these providers seek to minimize use of service modalities that are physically restrictive. While restrictive methods are utilized in some instances, utilization of such methods must be minimized and closely monitored. Over-utilization of highly restrictive methods suggests either the lack of availability or knowledge of more appropriate, less restrictive practices.

These seclusion measures include all involuntary confinement of an individual alone in a room. Seclusion hours are measured in terms of 1000 inpatient hours. Inpatient hours are calculated as the number of days each individual was on the inpatient census multiplied by 24. A 30-bed facility with full census for a month totals 21,600 inpatient hours. A rate of 0.8 means that there were 17.3 hours of seclusion during the month in this facility.

In general, a preferred direction for improvement is embedded in any performance measure. However, an apparent trend in the rates at the national level could be partially attributed to a change in the number of facilities, the rates of facilities participating in this measure, or both. Without established overall target levels as a guide, the interpretation of rates must take into consideration the context within which facilities operate.

<u>Reporting Period</u>	<u>Overall Rate</u>	<u>Age 12 years and under</u>	<u>Age 13-17 years</u>	<u>Age 18-24 years</u>	<u>Age 25-44 years</u>	<u>Age 45-64 years</u>	<u>Age 65 years and older</u>
1/2002	0.49	1.42	0.73	1.18	0.57	0.25	0.04
2/2002	0.44	1.02	0.50	1.10	0.58	0.16	0.03
3/2002	0.48	1.44	0.54	1.13	0.59	0.23	0.03
4/2002	0.48	1.16	0.46	1.04	0.65	0.18	0.03
5/2002	0.49	1.19	0.53	1.02	0.61	0.26	0.06
6/2002	0.46	0.75	0.44	1.38	0.60	0.14	0.02
7/2002	0.46	0.99	0.50	1.48	0.55	0.16	0.03
8/2002	0.45	1.07	0.95	1.45	0.50	0.13	0.06
9/2002	0.46	1.18	0.57	1.49	0.49	0.21	0.03
10/2002	0.43	1.03	0.61	1.26	0.49	0.17	0.02
11/2002	0.41	1.41	0.52	1.16	0.44	0.22	0.02
12/2002	0.41	1.05	0.52	1.43	0.43	0.18	0.02
1/2003	0.37	1.10	0.58	1.40	0.39	0.13	0.02
2/2003	0.39	0.78	0.60	1.16	0.46	0.15	0.04
3/2003	0.38	0.84	0.62	1.18	0.47	0.10	0.07
4/2003	0.37	1.23	0.52	1.05	0.47	0.12	0.03
5/2003	0.44	1.10	0.50	1.24	0.55	0.17	0.02
6/2003	0.40	0.87	0.35	0.96	0.50	0.21	0.07
7/2003	0.31	0.62	0.50	0.65	0.45	0.10	0.03
8/2003	0.29	0.89	0.40	0.81	0.34	0.13	0.01
9/2003	0.34	0.98	0.41	0.97	0.36	0.21	0.01
10/2003	0.36	0.74	0.34	1.13	0.34	0.25	0.03
11/2003	0.42	0.82	0.30	0.96	0.54	0.23	0.04
12/2003	0.44	0.77	0.30	0.64	0.67	0.22	0.03
1/2004	0.39	0.69	0.39	0.66	0.55	0.22	0.03

Using Data, Changing Practice™



National Public Rates - Age Stratification Report

Behavioral Healthcare Performance Measurement System

Seclusion Hours

©Copyright NASMHPD Research Institute, 1999-2009.

<u>Reporting Period</u>	<u>Overall Rate</u>	<u>Age 12 years and under</u>	<u>Age 13-17 years</u>	<u>Age 18-24 years</u>	<u>Age 25-44 years</u>	<u>Age 45-64 years</u>	<u>Age 65 years and older</u>
2/2004	0.41	0.90	0.39	0.91	0.50	0.24	0.04
3/2004	0.39	0.82	0.41	0.93	0.52	0.19	0.02
4/2004	0.53	0.80	0.36	1.13	0.76	0.23	0.03
5/2004	0.56	1.01	0.45	1.11	0.79	0.28	0.02
6/2004	0.51	0.80	0.39	1.19	0.68	0.26	0.03
7/2004	0.57	0.72	0.53	1.39	0.79	0.23	0.01
8/2004	0.55	0.78	0.30	1.57	0.64	0.32	0.01
9/2004	0.59	0.65	0.29	1.69	0.69	0.37	0.05
10/2004	0.50	0.65	0.37	1.50	0.59	0.26	0.01
11/2004	0.54	0.99	0.30	1.89	0.62	0.25	0.02
12/2004	0.49	0.88	0.36	1.58	0.56	0.25	0
1/2005	0.37	0.88	0.39	1.02	0.49	0.15	0.02
2/2005	0.36	0.98	0.62	1.31	0.39	0.13	0.01
3/2005	0.39	0.96	0.43	1.45	0.43	0.15	0.05
4/2005	0.43	1.04	0.50	1.95	0.40	0.15	0.02
5/2005	0.40	0.93	0.66	1.61	0.40	0.15	0.01
6/2005	0.38	0.93	0.95	1.27	0.36	0.19	0.01
7/2005	0.39	0.97	0.96	1.72	0.37	0.11	0.06
8/2005	0.39	0.92	0.81	1.44	0.46	0.10	0.01
9/2005	0.42	1.17	0.43	1.66	0.49	0.13	0.02
10/2005	0.46	1.04	0.35	1.74	0.57	0.15	0.02
11/2005	0.46	0.93	0.50	1.62	0.59	0.15	0.02
12/2005	0.52	0.61	0.37	1.79	0.71	0.16	0.02
1/2006	0.49	0.89	0.40	1.55	0.71	0.12	0.01
2/2006	0.46	0.88	0.45	1.51	0.64	0.12	0.01
3/2006	0.49	1.29	0.38	1.96	0.54	0.19	0.05
4/2006	0.42	1.13	0.44	1.68	0.45	0.17	0.03
5/2006	0.51	1.16	0.47	1.75	0.66	0.13	0.20
6/2006	0.42	1.08	0.60	1.45	0.49	0.15	0.20
7/2006	0.30	1.06	0.66	0.60	0.43	0.11	0.02
8/2006	0.39	1.15	0.57	0.85	0.59	0.13	0.02
9/2006	0.32	1.22	0.45	0.82	0.44	0.11	0.02
10/2006	0.38	1.09	0.47	1.00	0.59	0.09	0.03
11/2006	0.42	1.11	0.46	0.95	0.67	0.10	0.03
12/2006	0.38	1.15	0.42	0.86	0.61	0.11	0.03
1/2007	0.46	1.37	0.44	1.28	0.62	0.17	0.04
2/2007	0.49	1.41	0.44	1.47	0.71	0.13	0.05
3/2007	0.53	1.21	0.48	1.63	0.69	0.21	0.04
4/2007	0.53	1.23	0.75	1.38	0.77	0.17	0.02
5/2007	0.62	1.25	1.44	1.90	0.78	0.18	0.12
6/2007	0.56	0.80	0.85	1.52	0.76	0.23	0.03
7/2007	0.59	0.83	0.41	1.62	0.74	0.34	0.04
8/2007	0.69	0.98	0.72	1.78	0.87	0.39	0.02
9/2007	0.67	1.04	0.80	2.24	0.87	0.24	0.05
10/2007	0.78	1.03	0.90	2.55	1.01	0.31	0.05
11/2007	0.74	1.03	0.41	3.02	0.89	0.26	0.05
12/2007	0.65	1.00	0.81	1.57	0.93	0.25	0.15
1/2008	0.56	1.19	0.47	1.40	0.80	0.25	0.06
2/2008	0.52	1.22	0.33	1.33	0.77	0.19	0.03

Using Data, Changing Practice™

National Association of State Mental Health Program Directors Research Institute, Inc (NRI)

BHPMS Office: 209 Madison Street, Suite 401, Alexandria, VA 22314 - Phone (703) 682-9476 - Fax (703) 739-8956 - www.nri-inc.org



National Public Rates - Age Stratification Report

Behavioral Healthcare Performance Measurement System

Seclusion Hours

©Copyright NASMHPD Research Institute, 1999-2009.

<u>Reporting Period</u>	<u>Overall Rate</u>	<u>Age 12 years and under</u>	<u>Age 13-17 years</u>	<u>Age 18-24 years</u>	<u>Age 25-44 years</u>	<u>Age 45-64 years</u>	<u>Age 65 years and older</u>
3/2008	0.43	0.93	0.41	1.00	0.54	0.26	0.02
4/2008	0.53	1.45	0.53	0.89	0.62	0.43	0.07
5/2008	0.59	1.55	0.37	1.04	0.80	0.41	0.03
6/2008	0.62	1.33	0.43	1.34	0.82	0.39	0.03
7/2008	0.81	1.30	0.31	1.89	1.20	0.41	0.03
8/2008	0.59	1.11	0.33	1.18	0.83	0.35	0.05
9/2008	0.53	1.31	0.44	1.39	0.77	0.20	0.04
10/2008	0.64	1.27	0.40	1.62	0.96	0.24	0.08
11/2008	0.54	1.46	0.44	1.10	0.89	0.18	0.06
12/2008	0.53	1.18	0.39	1.07	0.83	0.23	0.05
1/2009	0.51	1.36	0.35	0.67	0.82	0.27	0.04
2/2009	0.47	1.28	0.47	0.68	0.80	0.19	0.03
3/2009	0.50	1.16	0.45	0.99	0.76	0.21	0.09



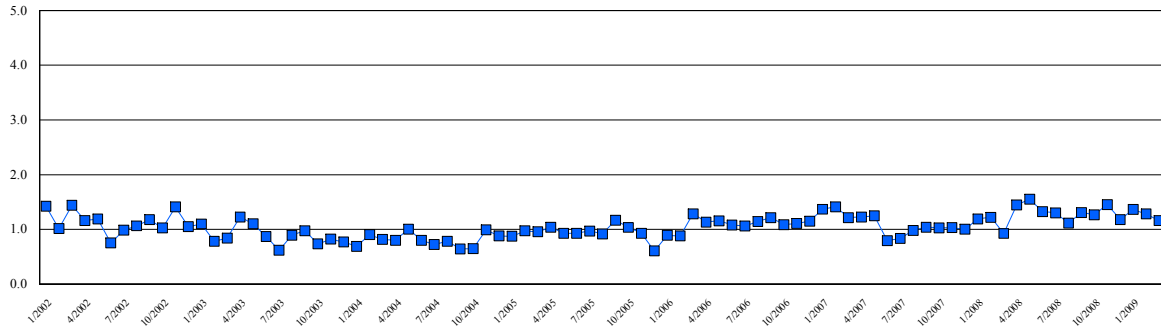
National Public Rates - Age Stratification Report

Behavioral Healthcare Performance Measurement System

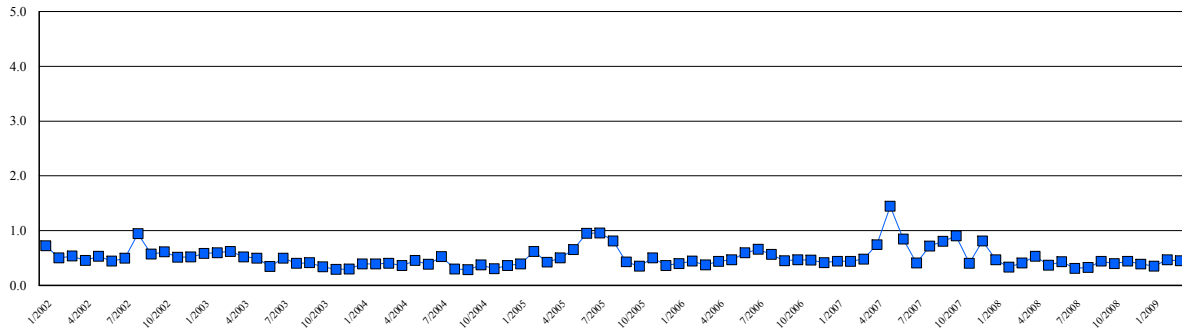
Seclusion Hours

©Copyright NASMHPD Research Institute, 1999-2009.

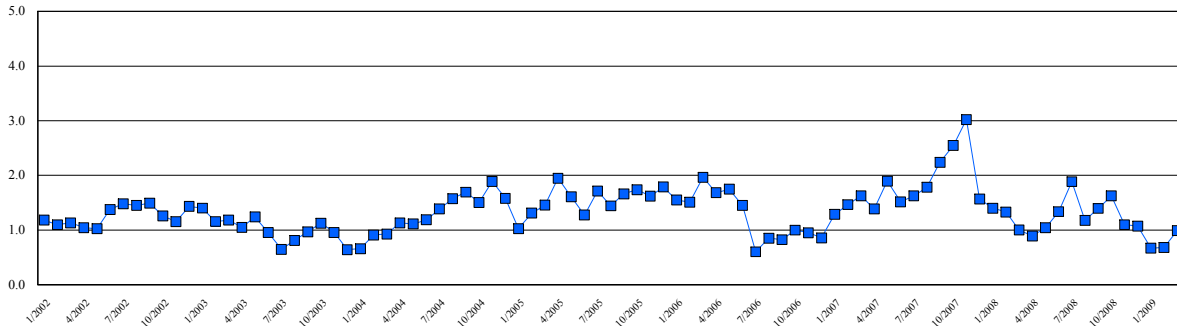
Clients age 12 years and under



Clients age 13-17 years



Clients age 18-24 years





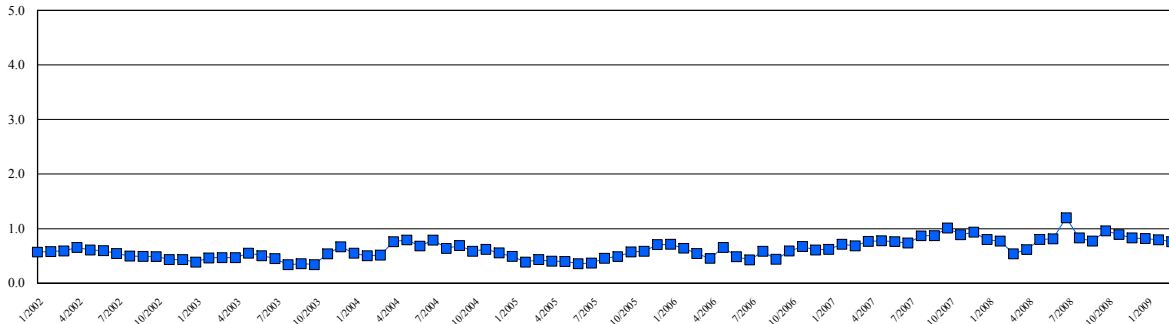
National Public Rates - Age Stratification Report

Behavioral Healthcare Performance Measurement System

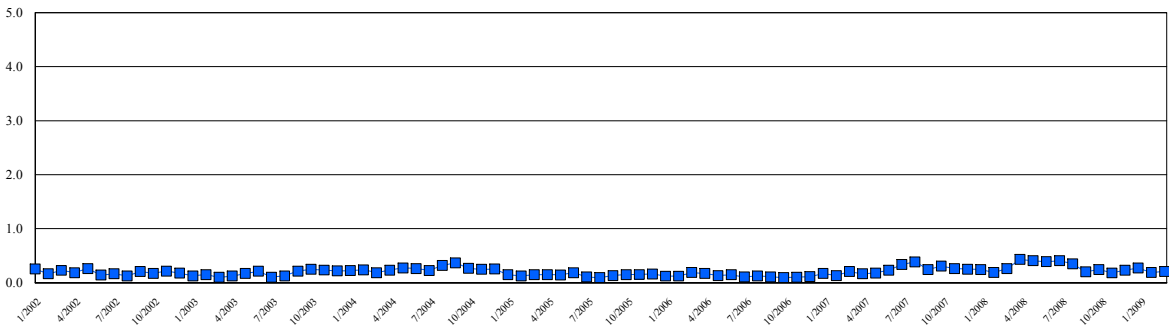
Seclusion Hours

©Copyright NASMHPD Research Institute, 1999-2009.

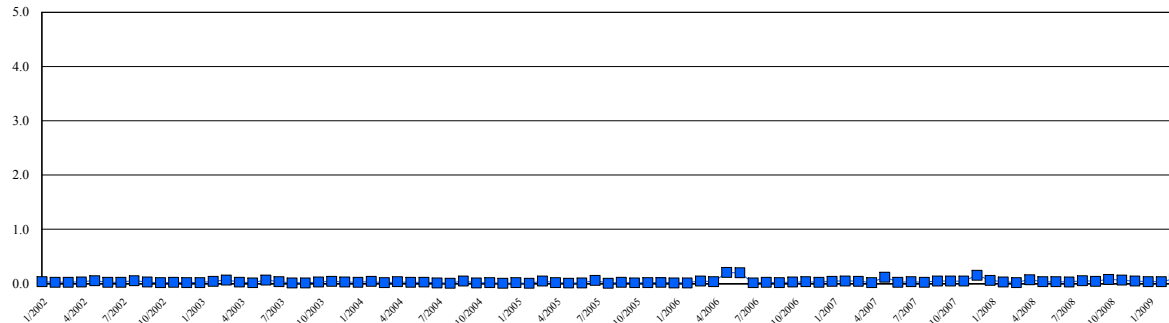
Clients age 25-44 years



Clients age 45-64 years



Clients age 65 years and older



Public rate reports are produced after data for a measure are finalized. The reports will include from three to six months lag. These reports are refreshed quarterly and three months of data are added at that time. Labels on the chart are provided at three month intervals, each square represents the rate for a month.



National Public Rates - Age Stratification Report

Behavioral Healthcare Performance Measurement System

Percent of Clients Secluded

©Copyright NASMHPD Research Institute, 1999-2009.

Citation: NRI Performance Measurement System. National Public Rates, Age Stratification Report: Percent of Clients Secluded. Alexandria, VA: National Association of State Mental Health Program Directors Research Institute, Inc. August 2009

Mental health service providers are consumer-focused and value an individual's autonomy and independence. Therefore, these providers seek to minimize use of service modalities that are physically restrictive. While restrictive methods are utilized in some instances, utilization of such methods must be minimized and closely monitored. Over-utilization of highly restrictive methods suggests either the lack of availability or knowledge of more appropriate, less restrictive practices.

These seclusion measures include all involuntary confinement of an individual alone in a room. Percent of clients secluded is measured in terms of unique individuals who were secluded at least once during the reporting period.

In general, a preferred direction for improvement is embedded in any performance measure. However, an apparent trend in the rates at the national level could be partially attributed to a change in the number of facilities, the rates of facilities participating in this measure, or both. Without established overall target levels as a guide, the interpretation of rates must take into consideration the context within which facilities operate.

<u>Reporting Period</u>	<u>Overall Rate</u>	<u>Age 12 years and under</u>	<u>Age 13-17 years</u>	<u>Age 18-24 years</u>	<u>Age 25-44 years</u>	<u>Age 45-64 years</u>	<u>Age 65 years and older</u>
1/2002	2.91	18.53	8.63	4.75	2.48	1.47	0.50
2/2002	2.65	16.86	8.17	4.50	2.17	1.31	0.37
3/2002	2.85	17.20	8.91	4.77	2.20	1.54	0.45
4/2002	2.84	17.79	8.78	4.37	2.39	1.35	0.38
5/2002	2.93	16.73	9.19	4.11	2.49	1.51	0.61
6/2002	2.67	14.92	8.36	4.45	2.34	1.32	0.50
7/2002	2.81	15.17	8.53	4.61	2.46	1.59	0.61
8/2002	2.67	14.29	8.01	4.50	2.33	1.45	0.79
9/2002	2.88	16.29	8.58	5.30	2.46	1.41	0.44
10/2002	2.81	16.13	8.27	4.71	2.38	1.37	0.46
11/2002	2.66	15.93	8.68	4.59	2.13	1.28	0.44
12/2002	2.62	15.56	7.97	4.61	2.16	1.40	0.45
1/2003	2.58	17.48	7.79	4.31	2.26	1.38	0.43
2/2003	2.46	14.44	6.56	4.38	2.20	1.32	0.55
3/2003	2.51	13.46	6.75	4.10	2.36	1.31	0.34
4/2003	2.46	15.83	6.64	4.65	2.06	1.29	0.41
5/2003	2.49	14.89	7.00	4.16	2.13	1.44	0.35
6/2003	2.42	12.85	6.09	4.34	2.21	1.40	0.73
7/2003	2.29	14.99	6.14	4.28	2.00	1.27	0.57
8/2003	2.32	12.53	7.63	4.36	2.14	1.12	0.31
9/2003	2.29	15.59	6.79	4.24	2.05	1.13	0.26
10/2003	2.34	13.31	5.53	4.21	2.16	1.28	0.55
11/2003	2.40	16.08	5.88	4.18	2.21	1.24	0.62
12/2003	2.35	14.15	5.64	4.08	2.29	1.28	0.44
1/2004	2.49	14.25	7.46	4.76	2.24	1.27	0.46

Using Data, Changing Practice™



National Public Rates - Age Stratification Report

Behavioral Healthcare Performance Measurement System

Percent of Clients Secluded

©Copyright NASMHPD Research Institute, 1999-2009.

<u>Reporting Period</u>	<u>Overall Rate</u>	<u>Age 12 years and under</u>	<u>Age 13-17 years</u>	<u>Age 18-24 years</u>	<u>Age 25-44 years</u>	<u>Age 45-64 years</u>	<u>Age 65 years and older</u>
2/2004	2.32	15.11	6.78	3.93	2.07	1.21	0.55
3/2004	2.26	13.03	6.18	3.70	2.13	1.18	0.26
4/2004	2.35	14.32	6.38	3.21	2.28	1.28	0.52
5/2004	2.43	15.09	6.83	4.11	2.21	1.28	0.52
6/2004	2.37	13.90	6.70	4.11	2.10	1.42	0.46
7/2004	2.39	12.72	6.52	4.26	2.17	1.52	0.31
8/2004	2.32	13.22	6.02	4.27	2.15	1.35	0.20
9/2004	2.34	13.27	5.66	3.99	2.22	1.40	0.26
10/2004	2.36	12.50	6.72	4.56	2.16	1.19	0.32
11/2004	2.41	14.95	6.08	4.28	2.21	1.37	0.38
12/2004	2.30	13.60	5.67	4.34	2.27	1.18	0.18
1/2005	2.44	15.10	6.71	4.97	2.27	1.15	0.24
2/2005	2.28	13.81	6.00	4.44	2.12	1.16	0.18
3/2005	2.41	13.93	6.63	3.61	2.37	1.30	0.38
4/2005	2.44	14.98	5.97	4.08	2.30	1.37	0.57
5/2005	2.51	16.38	7.01	4.33	2.29	1.33	0.37
6/2005	2.40	16.02	6.45	4.48	2.19	1.32	0.39
7/2005	2.39	16.17	7.41	4.08	2.17	1.40	0.34
8/2005	2.39	16.16	7.64	4.37	2.16	1.30	0.42
9/2005	2.53	18.20	7.69	4.06	2.39	1.35	0.57
10/2005	2.48	16.59	6.55	4.48	2.37	1.34	0.37
11/2005	2.42	15.47	6.94	4.16	2.26	1.38	0.48
12/2005	2.42	14.26	7.40	4.08	2.42	1.27	0.39
1/2006	2.46	14.43	7.76	4.56	2.34	1.25	0.43
2/2006	2.26	13.97	7.08	4.21	2.01	1.18	0.46
3/2006	2.60	17.13	7.24	4.61	2.39	1.36	0.57
4/2006	2.49	17.45	6.93	4.29	2.35	1.32	0.45
5/2006	2.51	17.50	7.05	4.44	2.31	1.30	0.70
6/2006	2.34	16.72	7.56	3.80	2.31	1.14	0.57
7/2006	2.29	15.03	7.41	3.79	2.25	1.24	0.45
8/2006	2.25	17.43	7.05	3.74	2.10	1.28	0.32
9/2006	2.21	19.03	7.53	3.91	1.94	1.17	0.39
10/2006	2.40	16.88	6.75	4.13	2.22	1.34	0.45
11/2006	2.27	15.89	6.40	3.89	2.16	1.24	0.48
12/2006	2.36	16.83	6.60	4.24	2.33	1.23	0.43
1/2007	2.54	19.81	7.17	4.97	2.36	1.18	0.58
2/2007	2.42	18.90	5.27	4.39	2.45	1.15	0.45
3/2007	2.65	17.61	6.62	4.78	2.37	1.49	0.64
4/2007	2.58	16.48	7.70	4.44	2.35	1.36	0.55
5/2007	2.58	17.91	6.66	4.32	2.43	1.40	0.41
6/2007	2.52	16.50	7.26	4.29	2.42	1.38	0.48
7/2007	2.58	18.09	7.39	4.64	2.46	1.40	0.57
8/2007	2.62	14.79	6.82	4.57	2.75	1.38	0.40
9/2007	2.61	17.51	7.36	4.62	2.61	1.27	0.70
10/2007	2.52	16.57	6.72	4.33	2.46	1.31	0.63
11/2007	2.41	14.88	6.60	4.24	2.33	1.28	0.72
12/2007	2.60	18.23	8.13	4.08	2.55	1.37	0.57
1/2008	2.61	17.73	6.97	4.45	2.60	1.34	0.83
2/2008	2.43	16.26	5.42	3.96	2.64	1.15	0.55

Using Data, Changing Practice™

National Association of State Mental Health Program Directors Research Institute, Inc (NRI)

BHPMS Office: 209 Madison Street, Suite 401, Alexandria, VA 22314 - Phone (703) 682-9476 - Fax (703) 739-8956 - www.nri-inc.org



National Public Rates - Age Stratification Report

Behavioral Healthcare Performance Measurement System

Percent of Clients Secluded

©Copyright NASMHPD Research Institute, 1999-2009.

<u>Reporting Period</u>	<u>Overall Rate</u>	<u>Age 12 years and under</u>	<u>Age 13-17 years</u>	<u>Age 18-24 years</u>	<u>Age 25-44 years</u>	<u>Age 45-64 years</u>	<u>Age 65 years and older</u>
3/2008	2.62	16.99	6.60	4.63	2.67	1.30	0.37
4/2008	2.60	18.47	6.71	3.94	2.68	1.32	0.49
5/2008	2.44	19.32	6.49	3.81	2.46	1.16	0.61
6/2008	2.50	21.22	7.10	4.33	2.35	1.33	0.58
7/2008	2.50	21.78	5.89	4.24	2.62	1.27	0.40
8/2008	2.60	20.42	6.62	4.96	2.50	1.40	0.56
9/2008	2.46	17.93	7.17	4.56	2.42	1.17	0.53
10/2008	2.53	18.39	7.13	4.06	2.49	1.21	0.80
11/2008	2.66	22.84	8.19	4.43	2.60	1.17	0.72
12/2008	2.57	21.08	6.25	4.58	2.45	1.35	0.80
1/2009	2.66	21.34	7.61	4.14	2.70	1.36	0.58
2/2009	2.53	21.86	7.63	4.67	2.41	1.04	0.59
3/2009	2.66	21.80	7.80	4.42	2.51	1.22	0.83



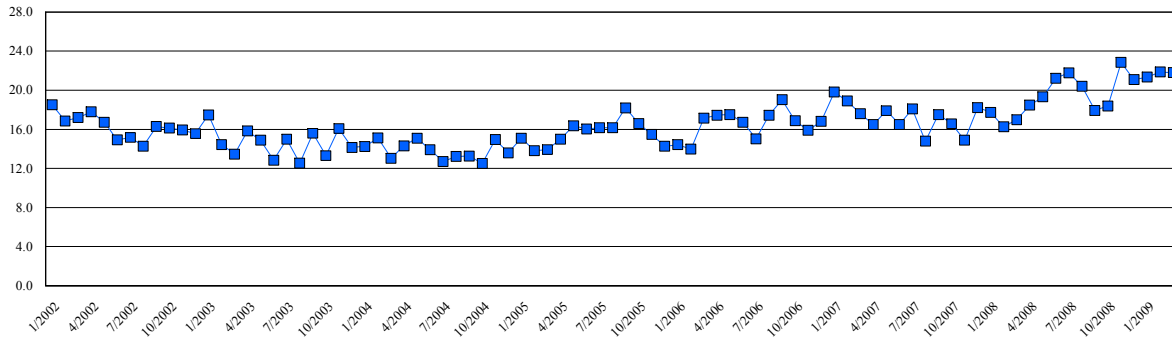
National Public Rates - Age Stratification Report

Behavioral Healthcare Performance Measurement System

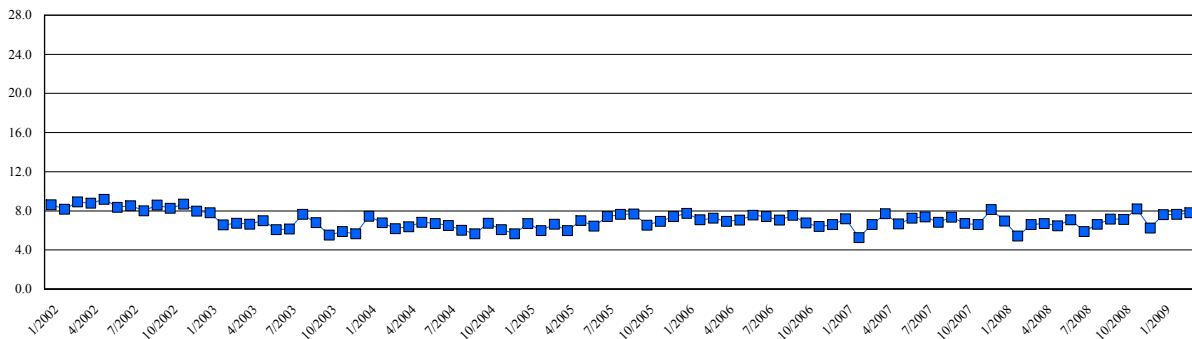
Percent of Clients Secluded

©Copyright NASMHPD Research Institute, 1999-2009.

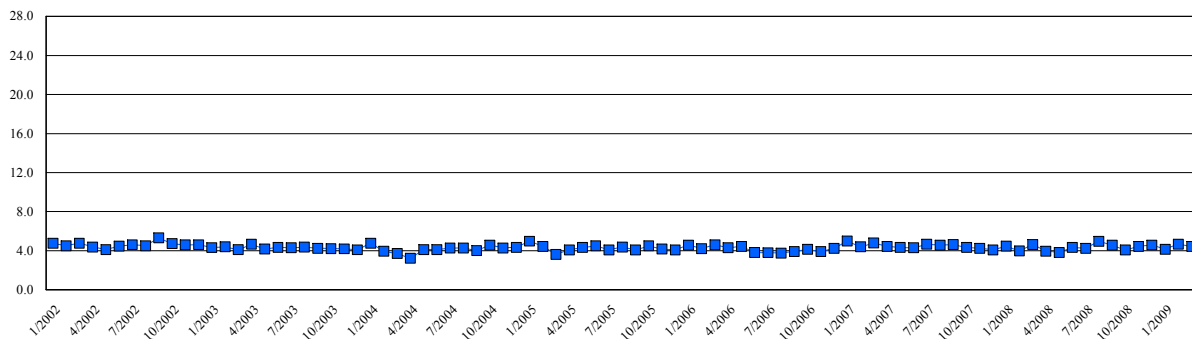
Clients age 12 years and under



Clients age 13-17 years



Clients age 18-24 years





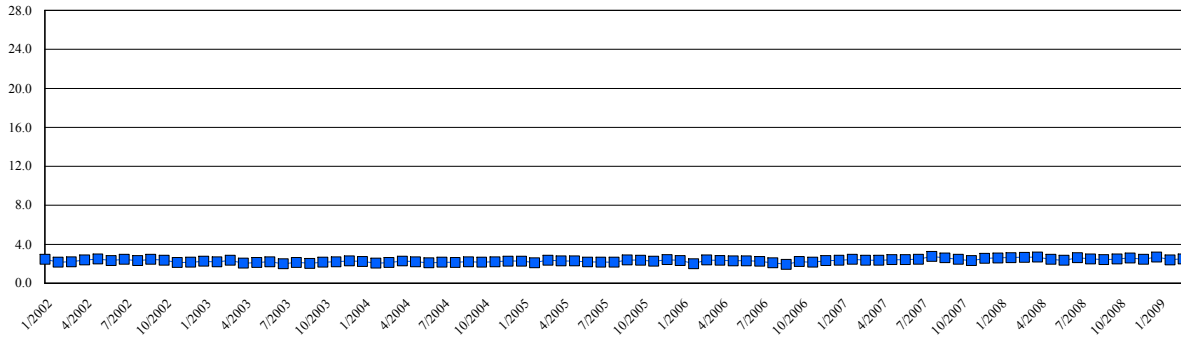
National Public Rates - Age Stratification Report

Behavioral Healthcare Performance Measurement System

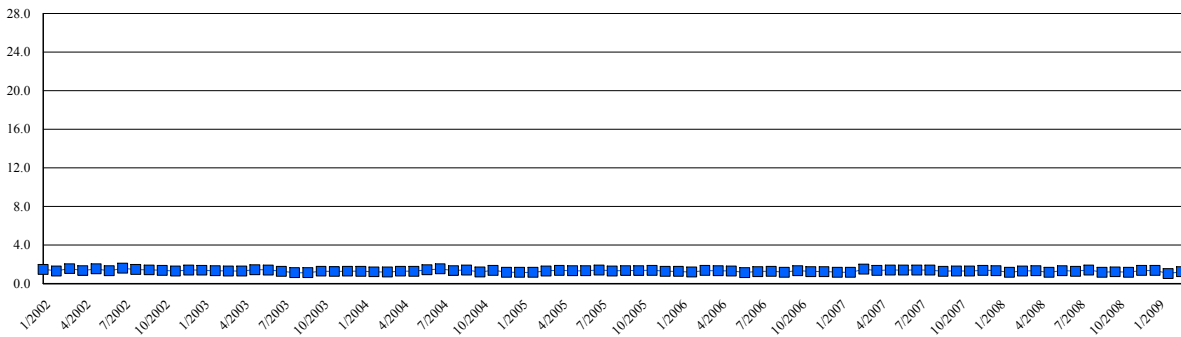
Percent of Clients Secluded

©Copyright NASMHPD Research Institute, 1999-2009.

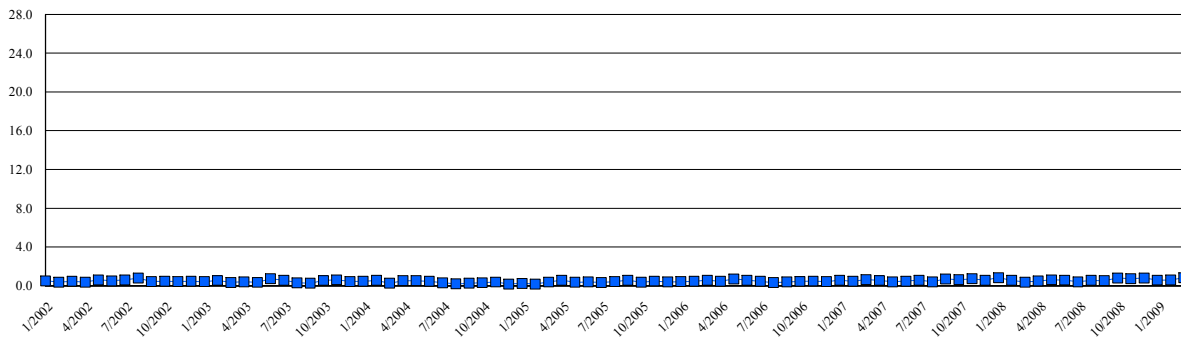
Clients age 25-44 years



Clients age 45-64 years



Clients age 65 years and older



Public rate reports are produced after data for a measure are finalized. The reports will include from three to six months lag. These reports are refreshed quarterly and three months of data are added at that time. Labels on the chart are provided at three month intervals, each square represents the rate for a month.

Using Data, Changing Practice™

National Association of State Mental Health Program Directors Research Institute, Inc (NRI)

BHPMS Office: 209 Madison Street, Suite 401, Alexandria, VA 22314 - Phone (703) 682-9476 - Fax (703) 739-8956 - www.nri-inc.org