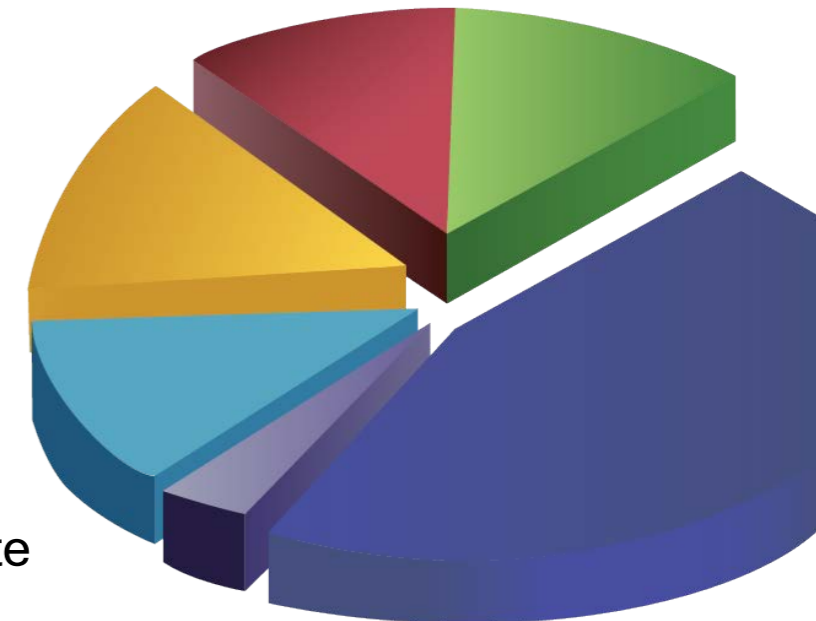


Forensic Patients in State Hospitals: 1999-2016

Vera Hollen, M.A.
Senior Director of Research & Consulting
Director, Mental Health/Criminal Justice Research Center



Authors and Contributors

Authors of the paper

Forensic Patients in State Psychiatric Hospitals: 1999-2016

Amanda Wik, M.A.
NRI Research Associate

Vera Hollen, M.A.
NRI Senior Director of Research and Consulting

William H. Fisher, Ph.D.
NRI Senior Consultant

Contributors

Debra A. Pinals, M.D.
Medical Director of Behavioral Health and Forensic Programs
Michigan Department of Health

W. Lawrence Fitch, J.D.
Adjunct Professor, University of Maryland Law School and Medical School

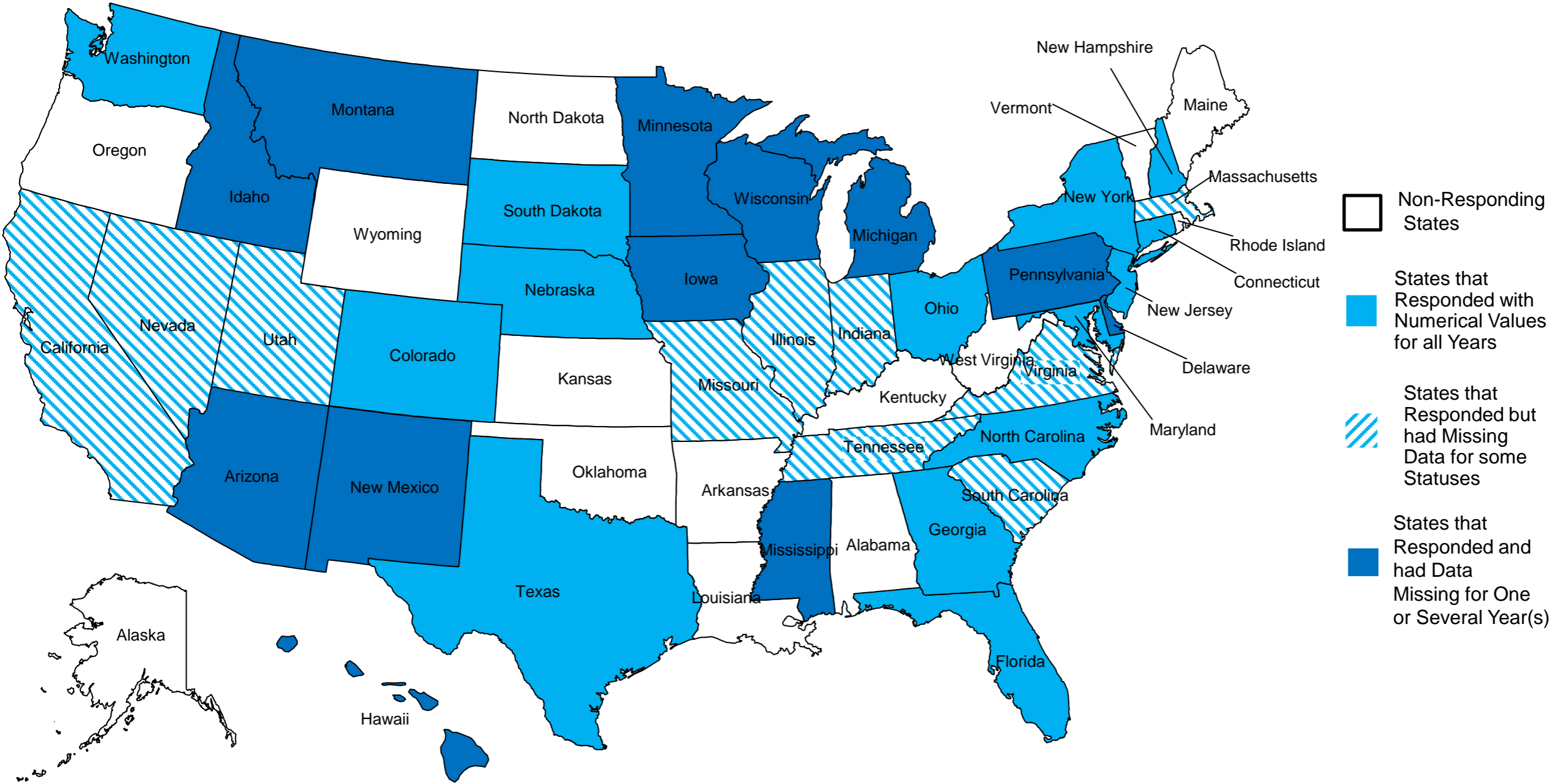
Katherine Warburton, D.O.
Acting Medical Director/Deputy Director of Clinical Operations
California Department of State Hospitals

And the **Forensic Directors** in each State Behavioral Health Agency

Background

- Recent concern has arisen over the proportional increase in state hospitals' forensic patients
- Inpatient bed availability has been a pervasive theme among policy makers, advocates, family members, and the media
- At least twenty states have been threatened with, or have been, held In Contempt over wait times for admission

States that Responded to Survey



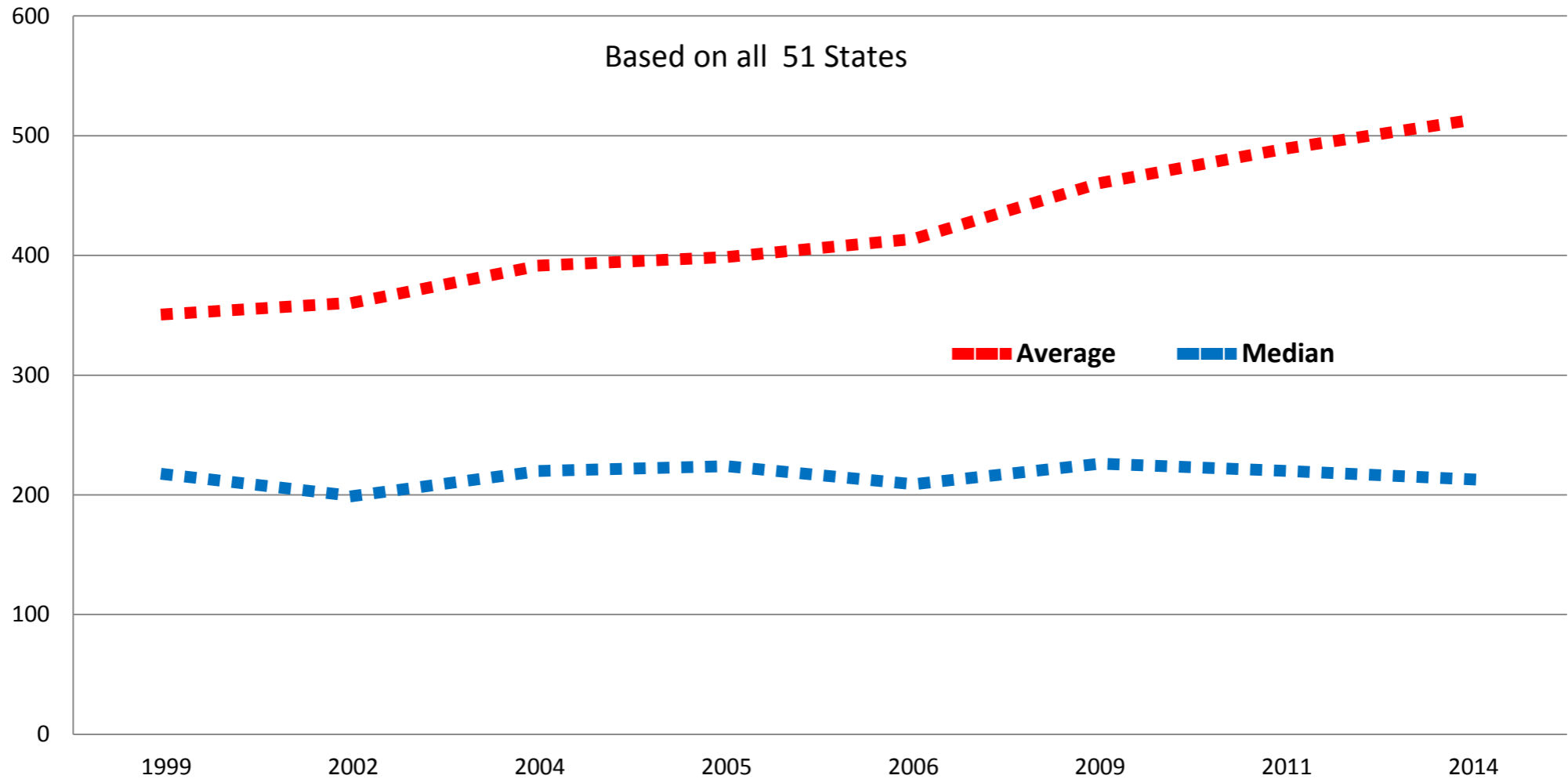
Note: The District of Columbia also responded to the survey.

Source: 2017 NRI Inpatient Forensic Services Study

Total Forensic Patients In State Hospitals

One Day Census Per State of Adult Forensic Patients at State Psychiatric Hospitals, 1999- 2014

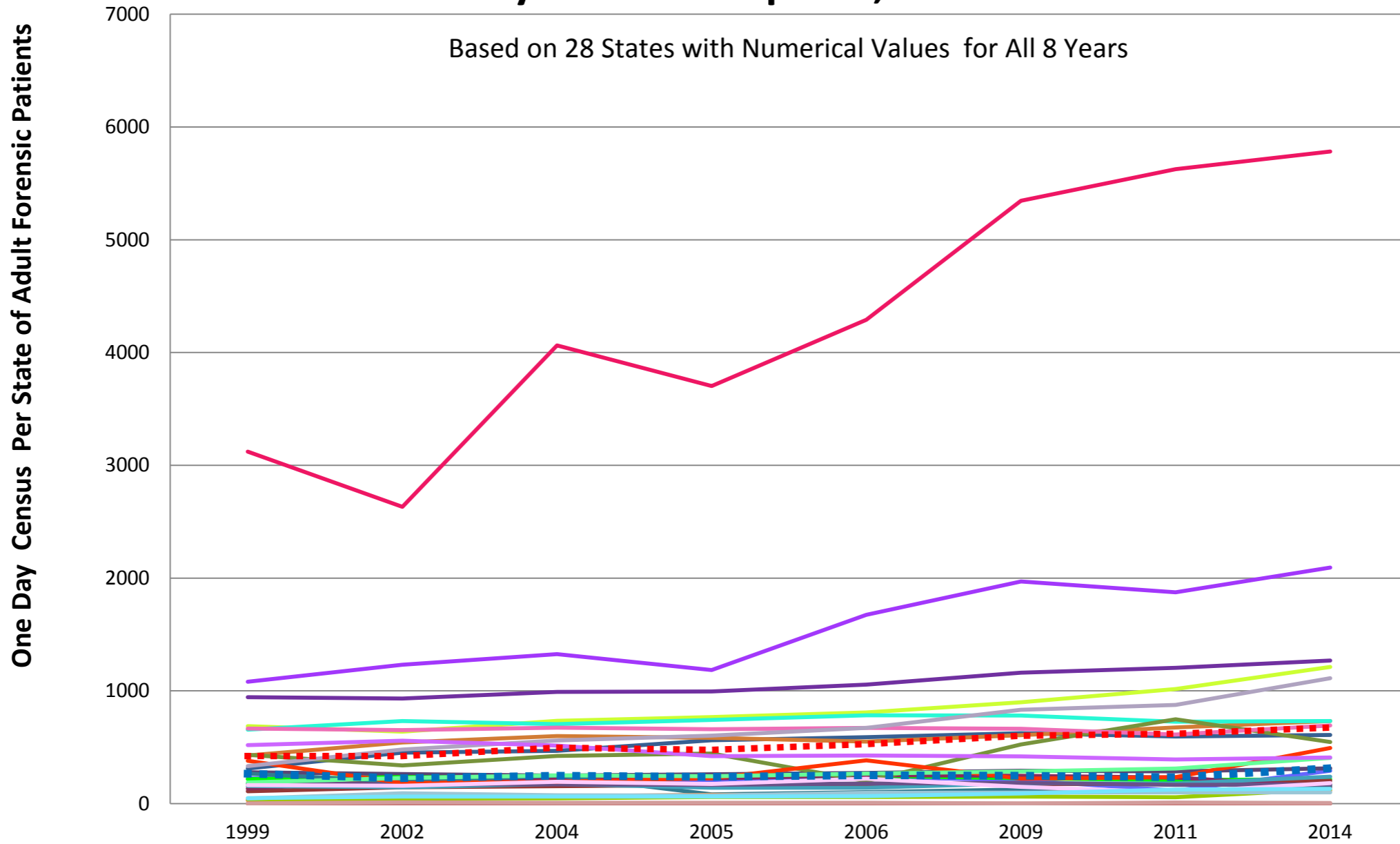
One Day Census Per State of Adult Forensic Patients



Sources: 2017 NRI Inpatient Forensic Services Study, and 1995-2015 State Mental Health Agency Profiling System



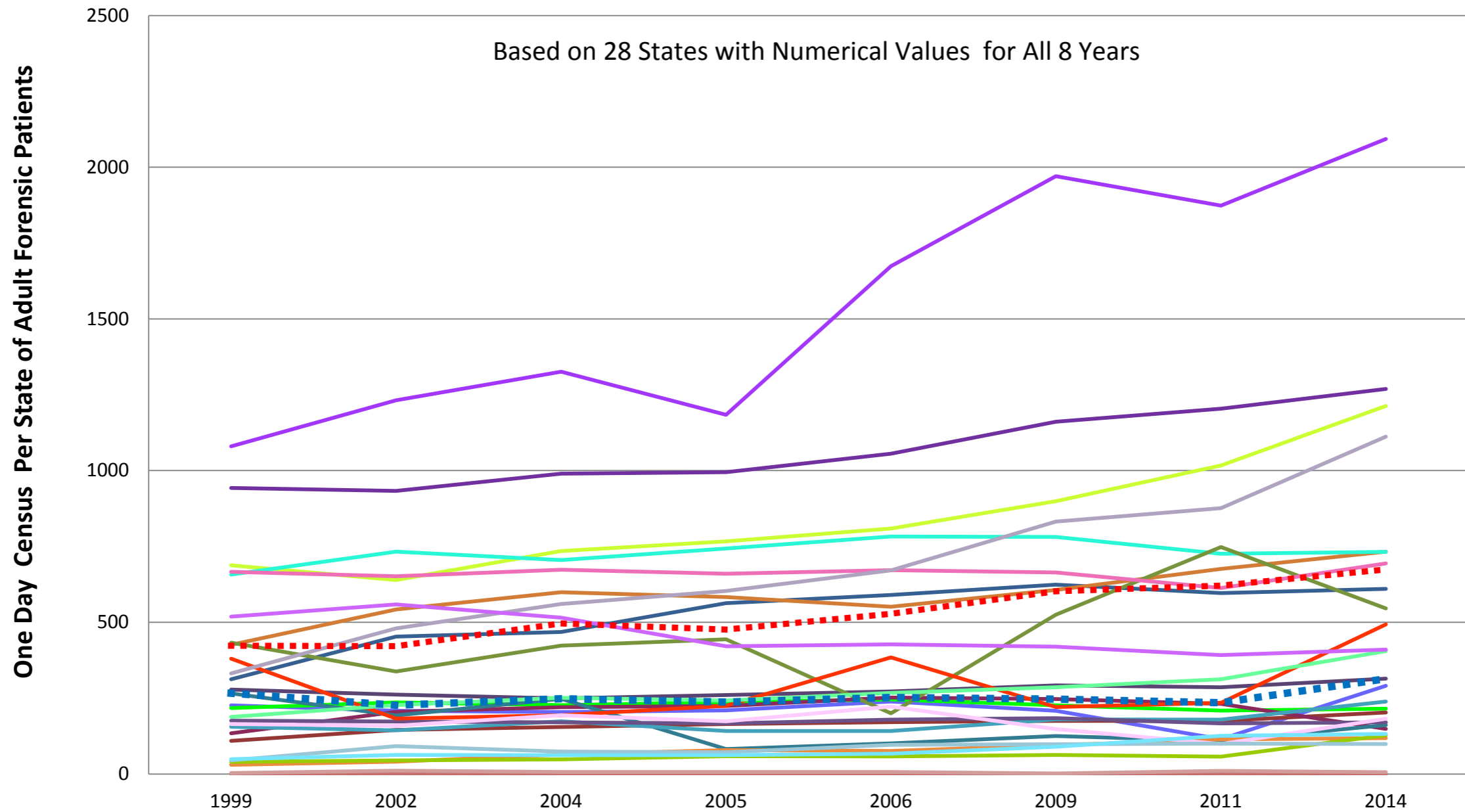
One Day Census Per State of Adult Forensic Patients at State Psychiatric Hospitals, 1999- 2014



Sources: 2017 NRI Inpatient Forensic Services Study, and 1995-2015 State Mental Health Agency Profiling System



One Day Census Per State of Adult Forensic Patients at State Psychiatric Hospitals, 1999- 2014

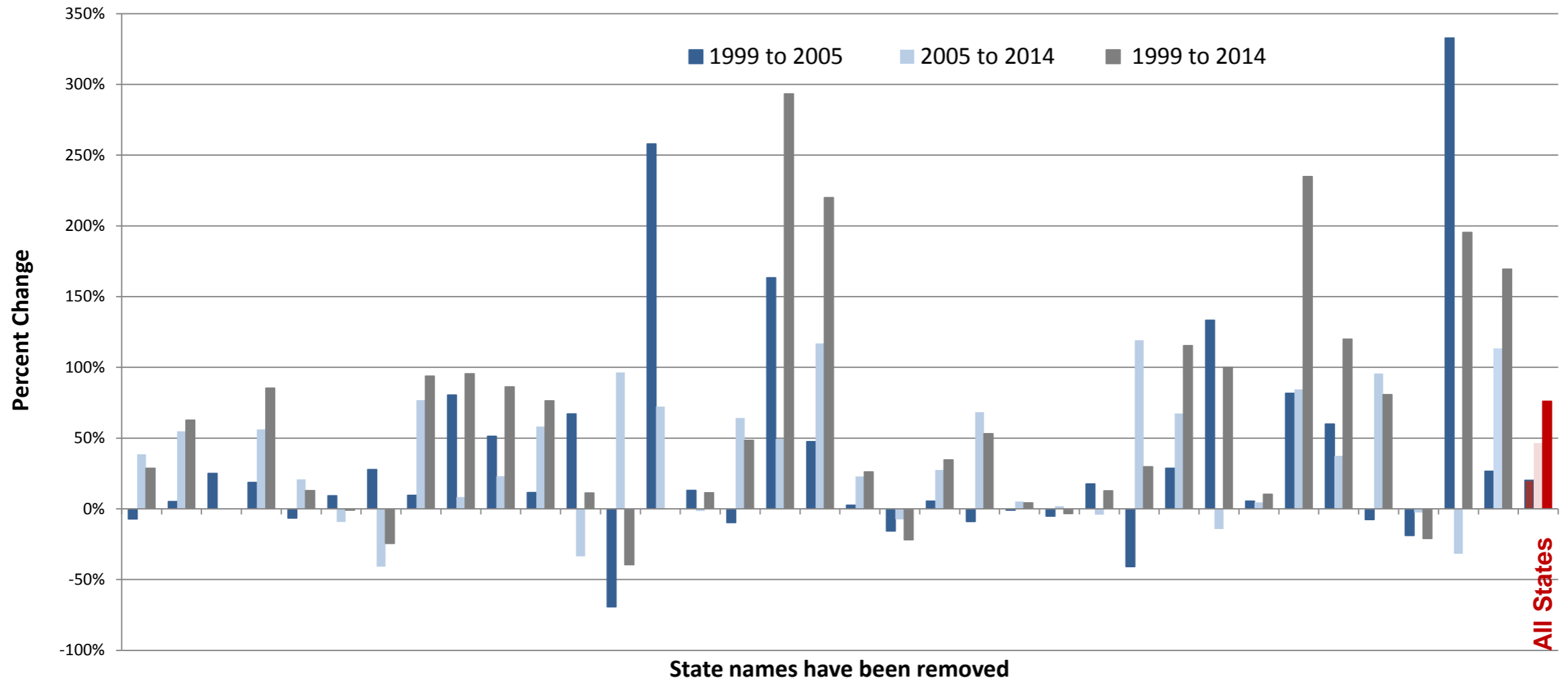


Sources: 2017 NRI Inpatient Forensic Services Study, and 1995-2015 State Mental Health Agency Profiling System



Percent Change in Inpatient Forensic Population

Based on the 35 States with Numerical Data for 1999, 2005, and 2014

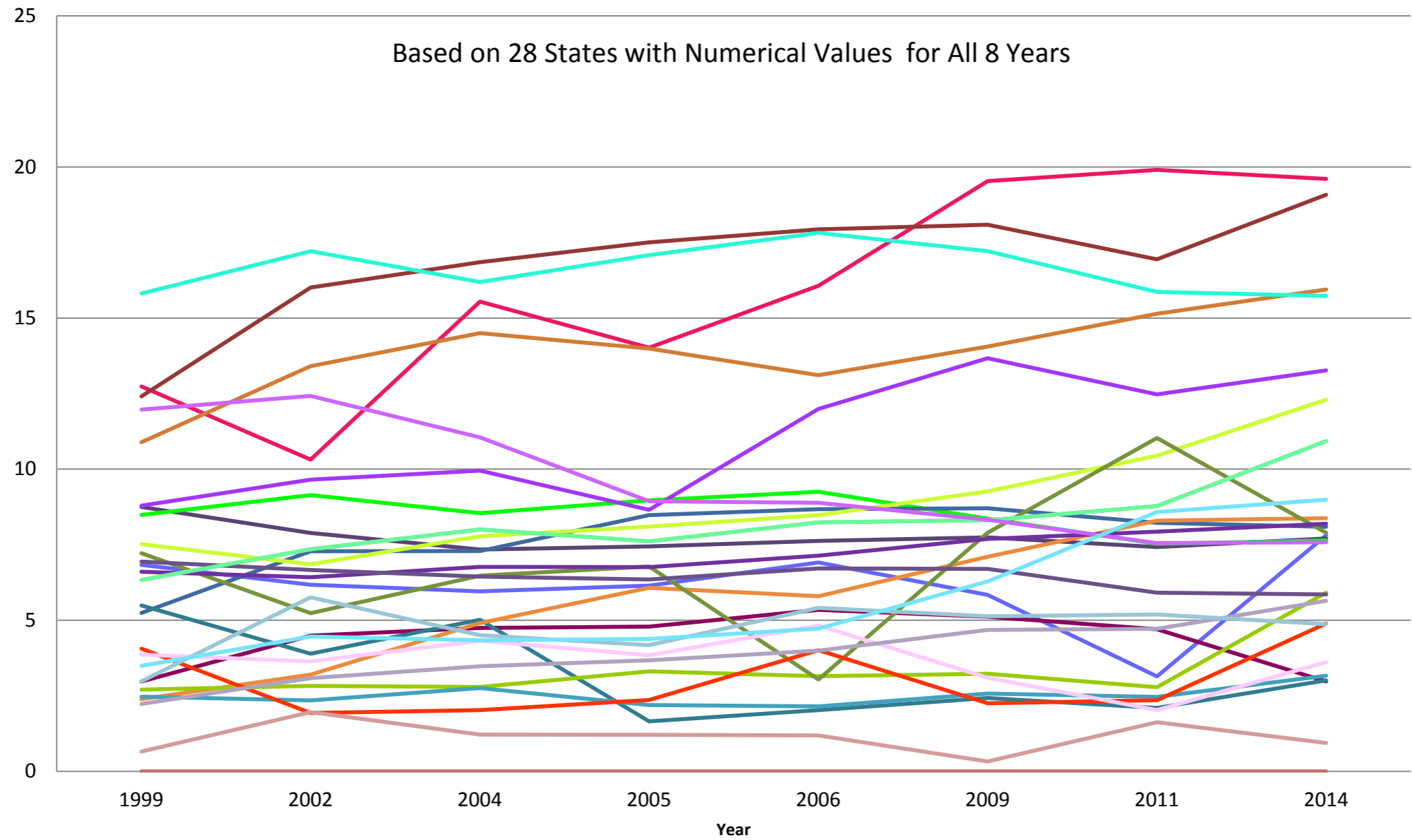


Sources: 2017 NRI Inpatient Forensic Services Study, and 1995-2015 State Mental Health Agency Profiling System



One Day Census Per State of Adult Forensic Patients at State Psychiatric Hospitals Per 100,000 Adult Civilians, 1999-2014

One Day Census Per State of Adult Forensic Patients Per 100,000 Adult Civilians

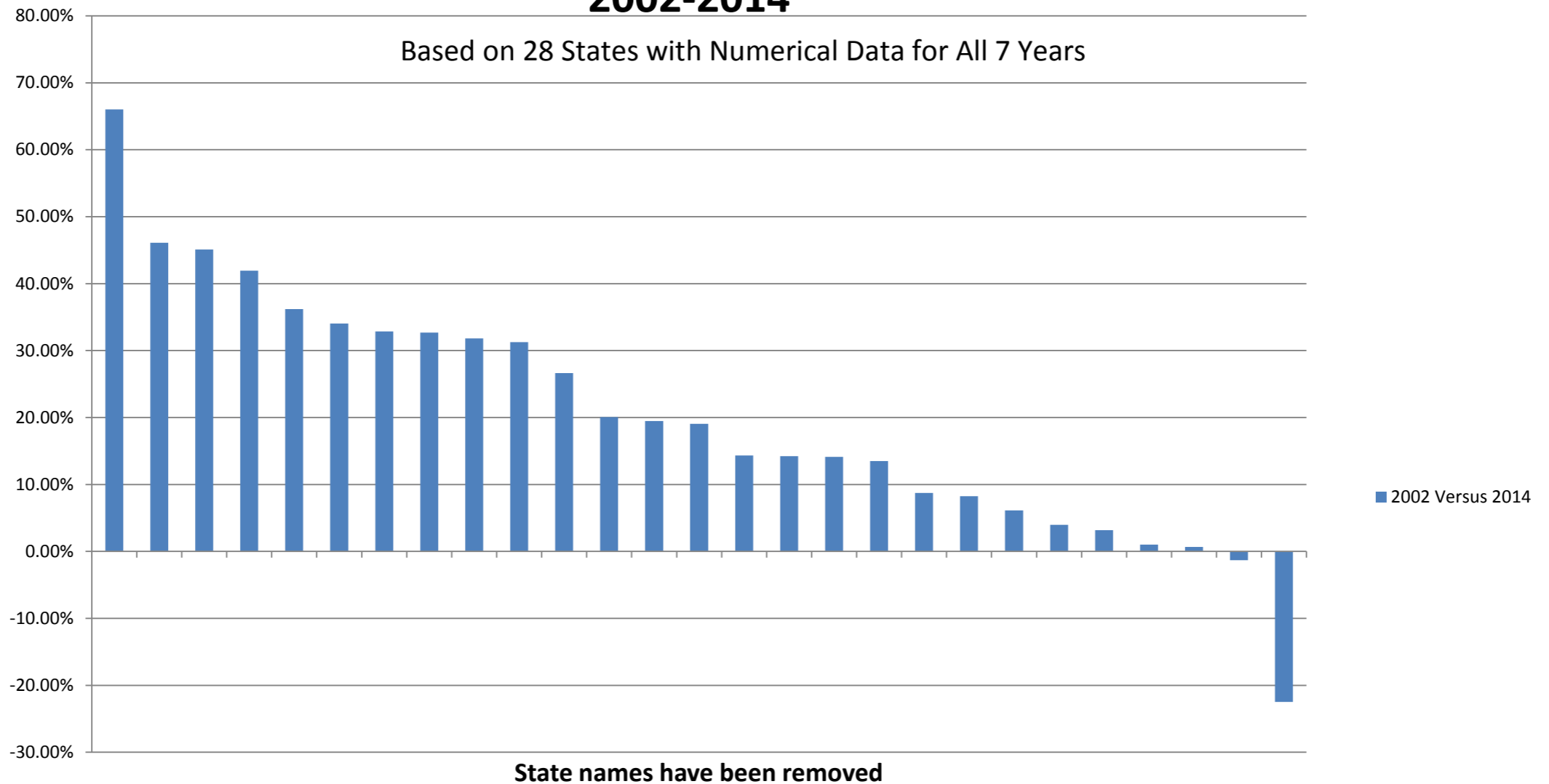


Sources: 2017 NRI Inpatient Forensic Services Study, and 1995-2015 State Mental Health Agency Profiling System



Change in the Forensic Composition of State Psychiatric Hospitals, 2002-2014

Change in Forensic Composition Between 2002 and 2014



Sources: 2017 NRI Inpatient Forensic Services Study, the Uniform Reporting System, and the 1995-2015 State Mental Health Agency Profiling System

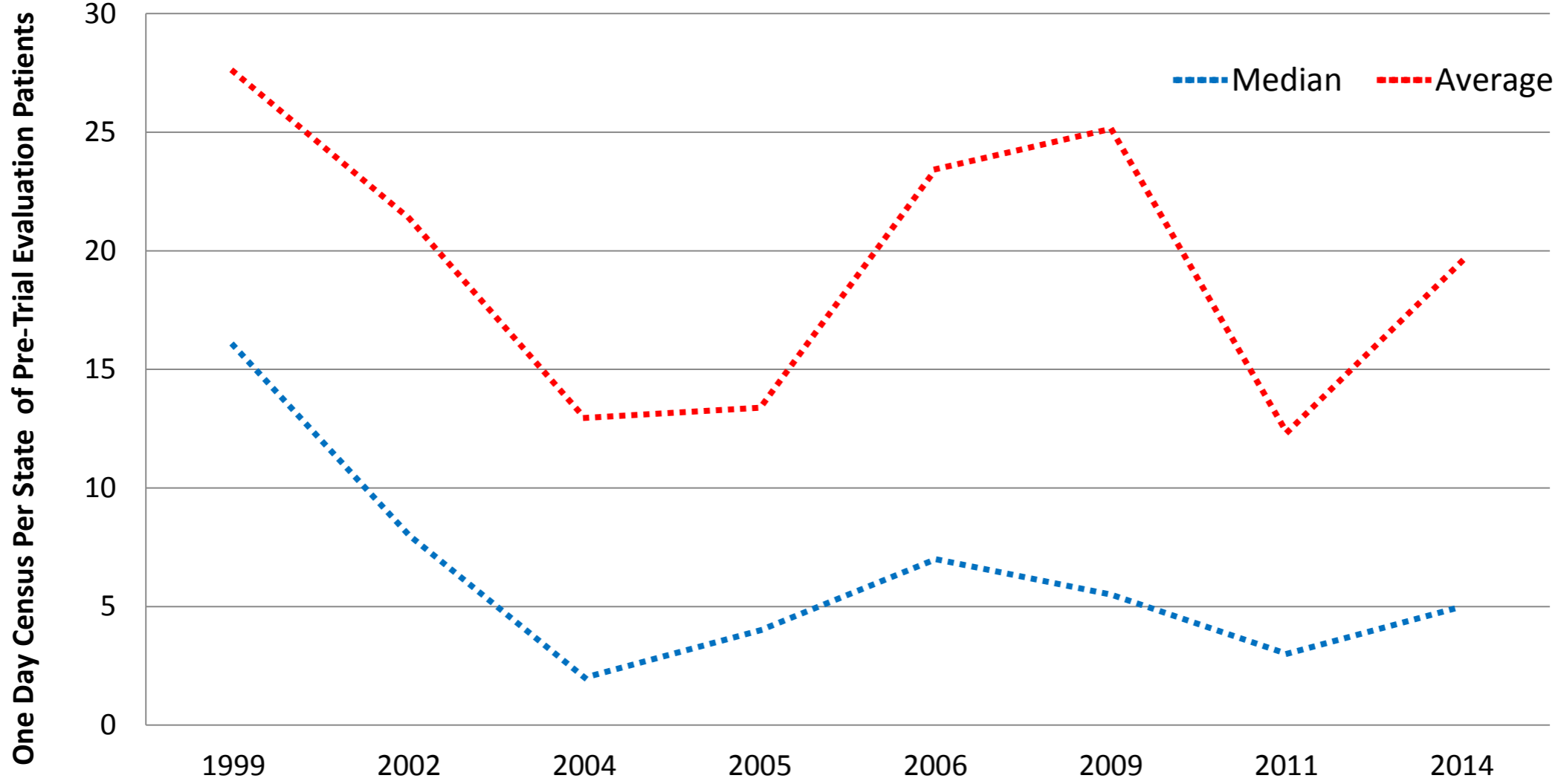
Conclusions

- State psychiatric hospitals have seen an increase in the number of adult forensic patients from 1999 to 2014
- But the degree of increase varies among states
- A larger proportion of the state psychiatric hospitals' population is comprised of forensic patients and is increasing

Pre-Trial Evaluations

One Day Census Per State of Pre-Trial Evaluation Patients at State Psychiatric Hospitals, 1999- 2014

Based on all 51 States

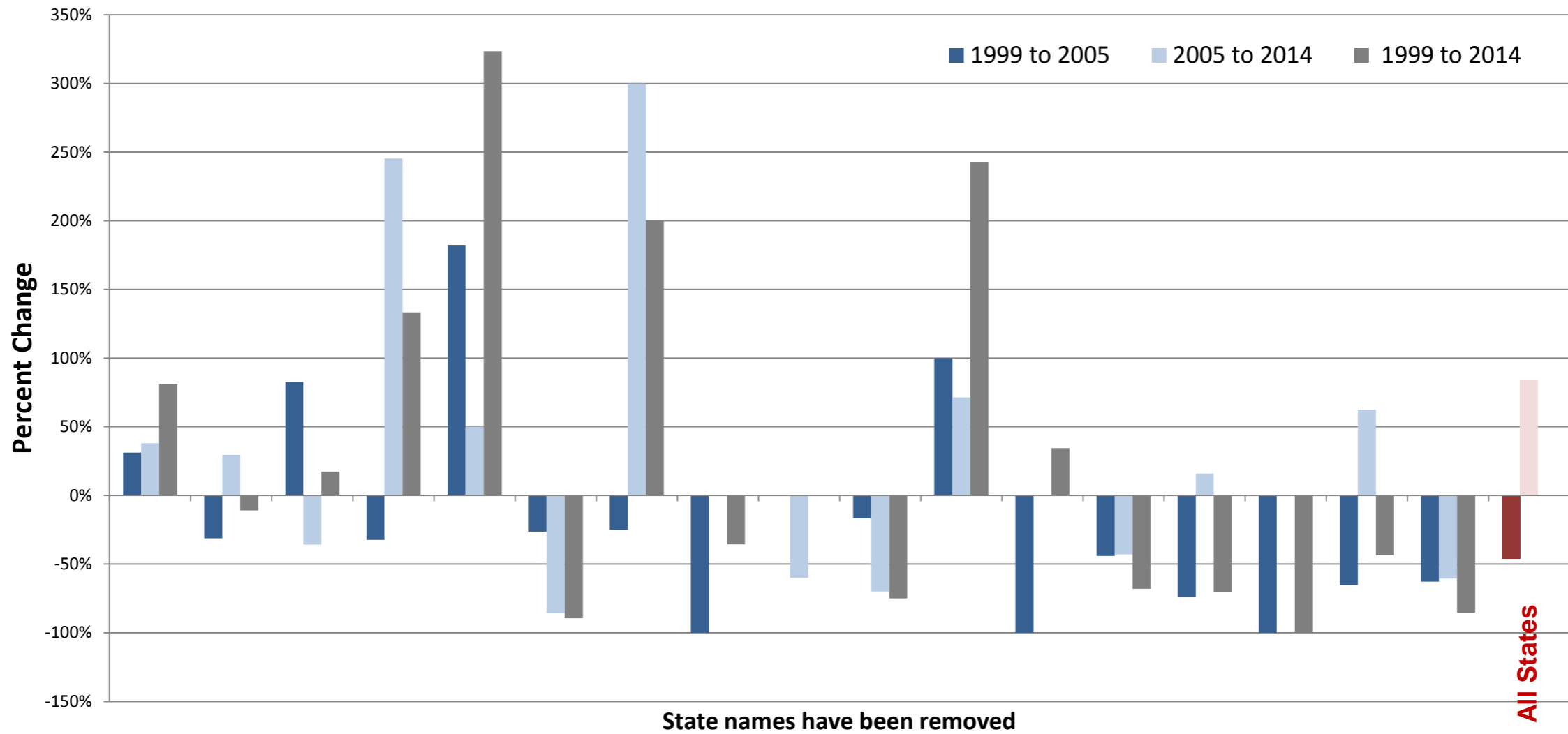


Sources: 2017 NRI Inpatient Forensic Services Study, and 1995-2015 State Mental Health Agency Profiling System



Percent Change in the Inpatient Pre-Trial Evaluation Population, 1999-2014

Based on the 17 States with Numerical Data for 1999, 2005, and 2014



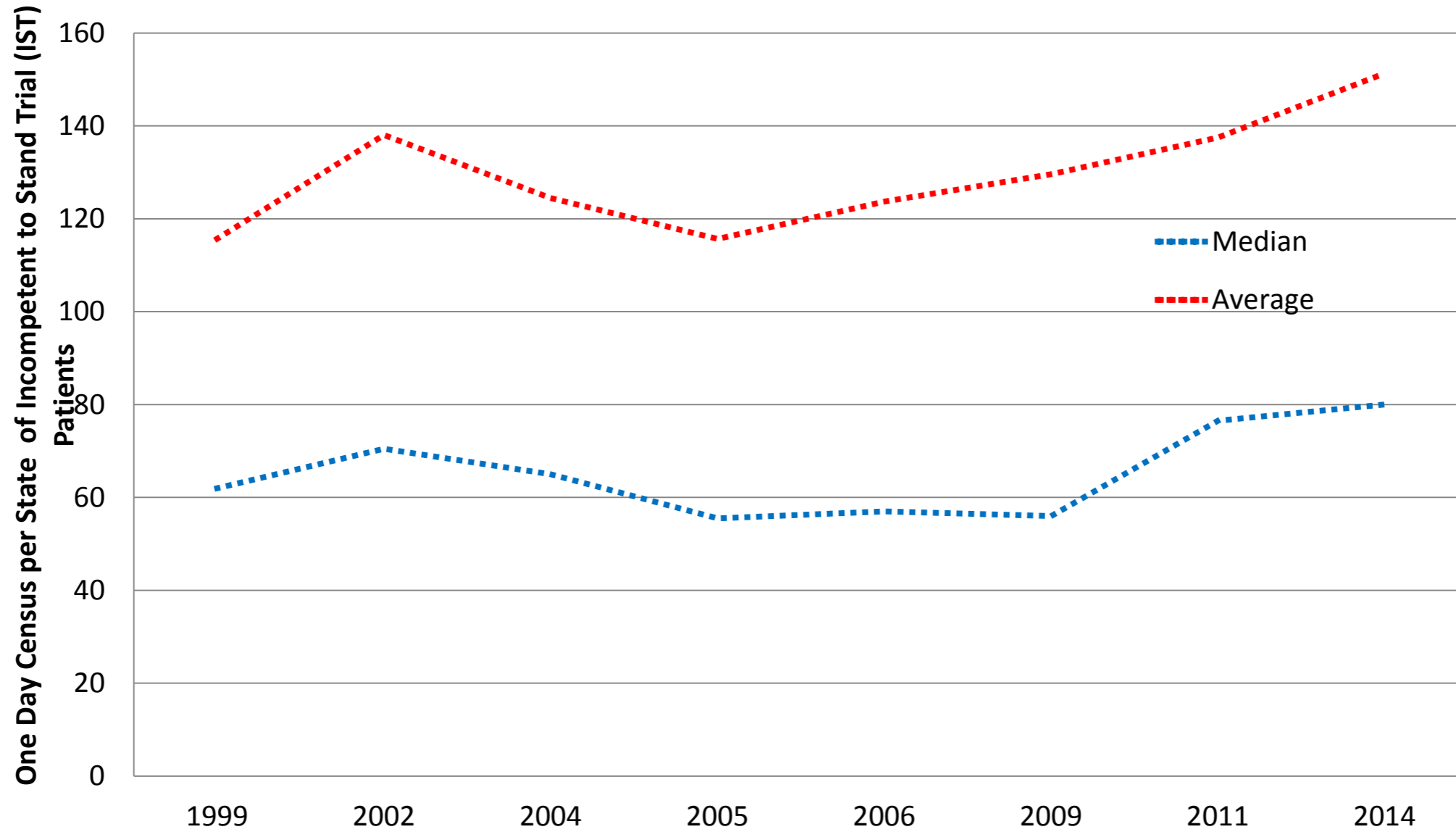
Sources: 2017 NRI Inpatient Forensic Services Study, and 1995-2011 State Mental Health Agency Profiling System



Incompetent to Stand Trial (IST) Restoration Services

One Day Census Per State of Incompetent to Stand Trial (IST) Patients at State Psychiatric Hospitals, 1999- 2014

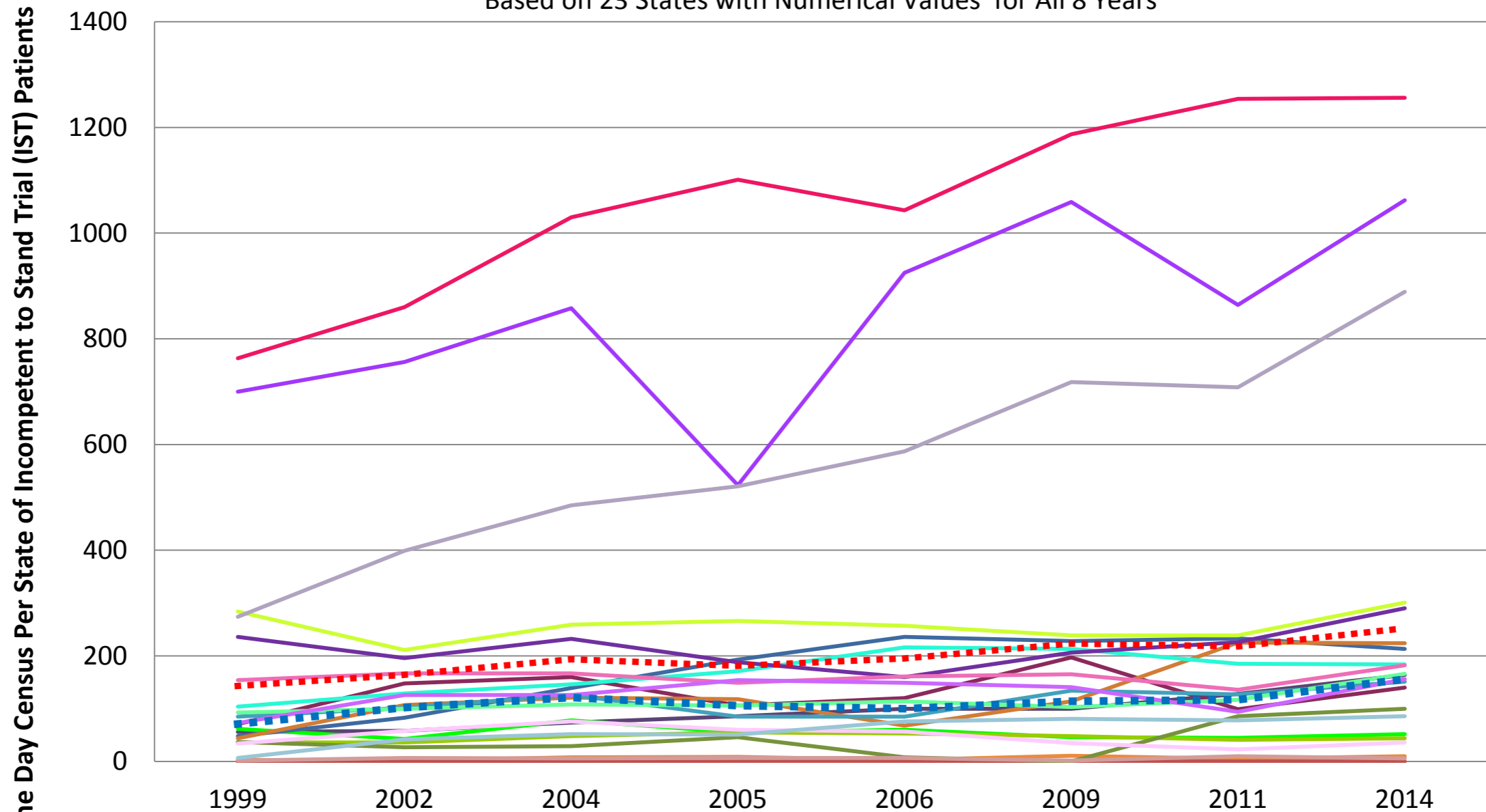
Based on all 51 States



Sources: 2017 NRI Inpatient Forensic Services Study, and 1995-2015 State Mental Health Agency Profiling System

One Day Census Per State of Incompetent to Stand Trial (IST) Patients at State Psychiatric Hospitals, 1999- 2014

Based on 23 States with Numerical Values for All 8 Years

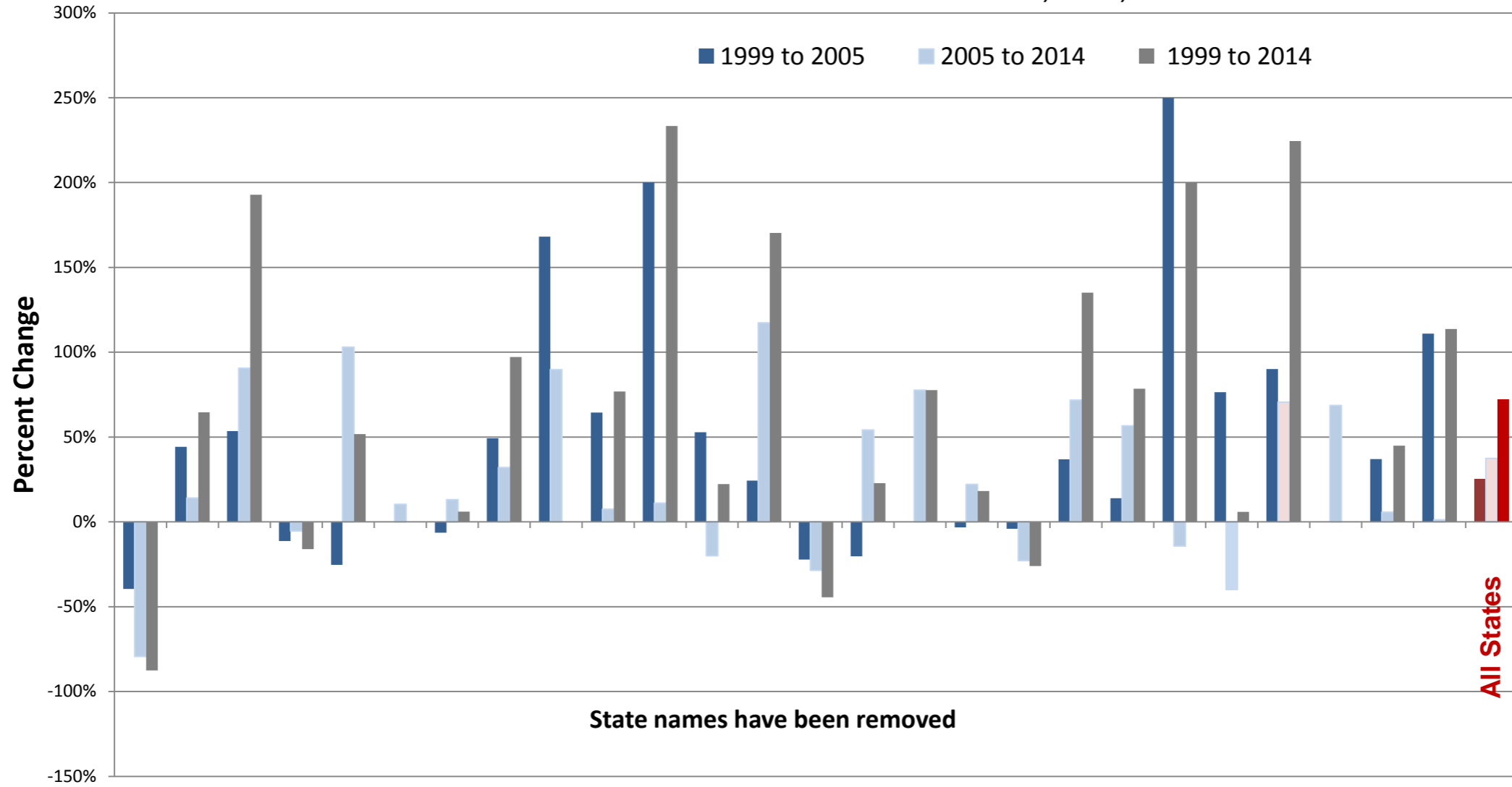


Sources: 2017 NRI Inpatient Forensic Services Study, and 1995-2015 State Mental Health Agency Profiling System



Percent Change in Inpatient Incompetent to Stand Trial Population, 1999-2014

Based on the 26 States with Numerical Data for 1999, 2005, and 2014



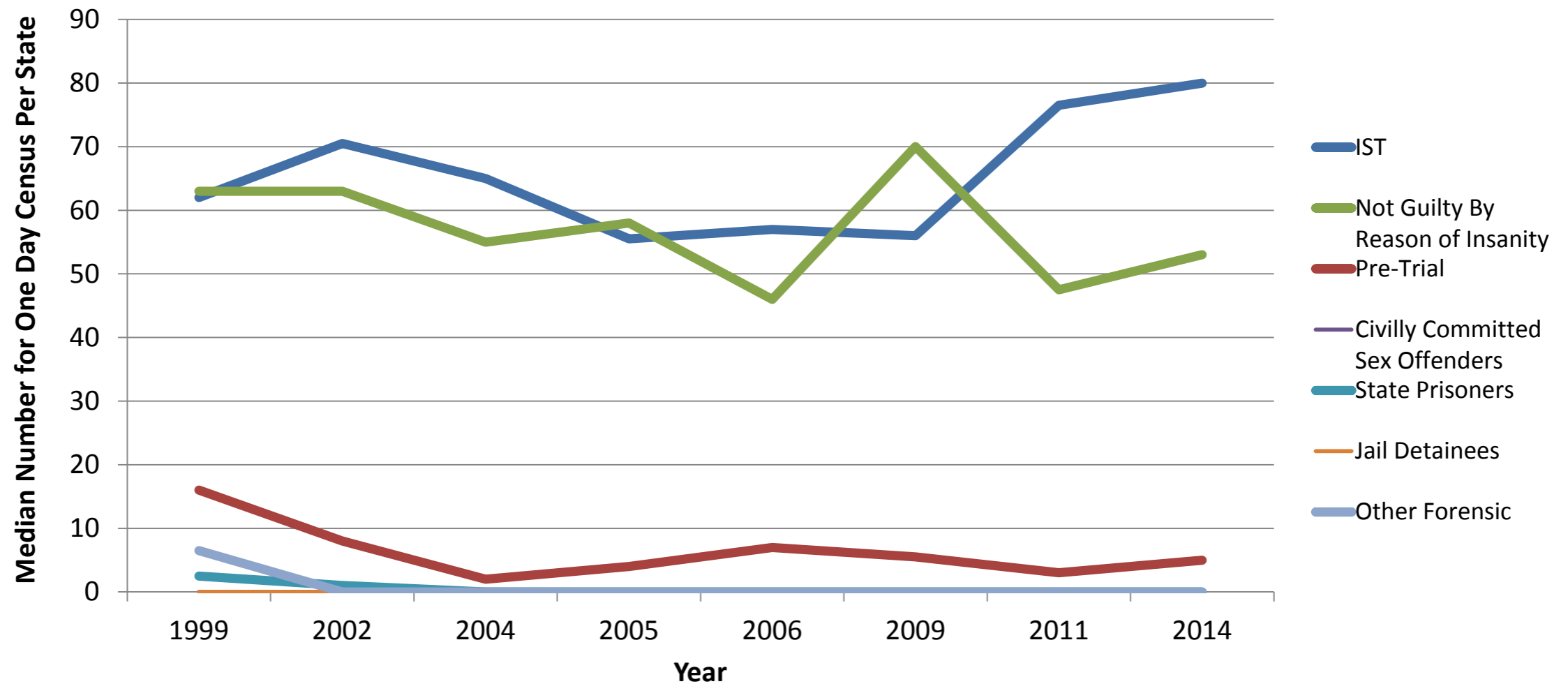
Sources: 2017 NRI Inpatient Forensic Services Study, and 1995-2015 State Mental Health Agency Profiling System



All Forensic Statuses

The National Median for the One Day Census Per State of Forensic Patients in State Psychiatric Hospitals from 1999-2014 by Forensic Category

Based on Data from All 51 States



Note: A higher number of states reported in 2002 than in 1999 and 2004. The median for 2002 was 142. The median for 2002 was dramatically higher than the medians for all other years. As a result, the median from 1999 was used for 2002 in this graph. Therefore, the median for 2002 should be interpreted with caution.

Sources: 2017 NRI Inpatient Forensic Services Study, and 1995-2015 State Mental Health Agency Profiling System



Conclusions

- An increasing proportion of state psychiatric hospitals' forensic population is composed of Incompetent to Stand Trial patients
- NGRI patients and civilly committed persons with a history of sex offenses also account for a proportion of the forensic population that occupy beds for a long period of time
- The rise in the proportion of beds occupied by the forensic population has led to increased expenditures for this group
- The rise in the forensic population in state hospitals may be attributed to an increased number of referrals from the judiciary
- In some states, litigation and threat of litigation has occurred related to the amount of time taken to admit forensic patients
- Each state faces their own unique challenges related to forensic patients. The issues are highly complex
- States are implementing a broad diversity of approaches to help address the demand for forensic services within the state psychiatric hospitals
- The demand for inpatient services is directly related to the array of services available in the community

Contact:

Vera Hollen, M.A.
Senior Director of Research
and Consulting
Vera.Hollen@nri-inc.org
703-738-8165

Amanda Wik, M.A.
Research Associate
Amanda.Wik@nri-inc.org
703-738-8178